

mGluR-2/3 Rabbit pAb

CatalogNo: YT2743

| Key Features

Host Species

- Rabbit

Reactivity

- Human, Mouse, Rat

Applications

- WB, IHC, IF, ELISA

MW

- 100kD (Observed)

Isotype

- IgG

| Recommended Dilution Ratios

WB 1:500-1:2000

IHC 1:100-1:300

ELISA 1:20000

IF 1:50-200

| Storage

Storage*

-15°C to -25°C/1 year (Do not lower than -25°C)

Formulation

Liquid in PBS containing 50% glycerol, 0.5% BSA and 0.02% sodium azide.

| Basic Information

Clonality

Polyclonal

| Immunogen Information

Immunogen

The antiserum was produced against synthesized peptide derived from human mGluR2/3. AA range: 823-872

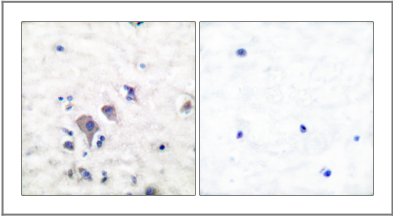
Specificity

mGluR-2/3 Polyclonal Antibody detects endogenous levels of mGluR-2/3 protein.

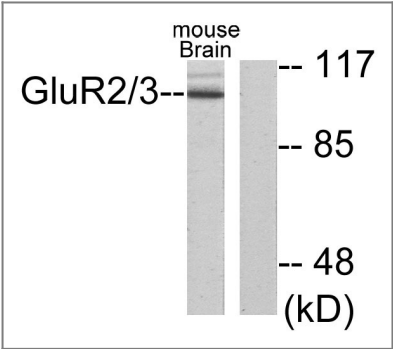
| Target Information

| | | | |
|------------------------------|---|---|---|
| Gene name | GRM2 | | |
| Protein Name | Metabotropic glutamate receptor 2 | | |
| | Organism | Gene ID | UniProt ID |
| | Human | 2912 ; 2913 ; | Q14416 ; Q14832 ; |
| | Mouse | 108068 ; 108069 ; | |
| | Rat | 24415 ; 24416 ; | P31421 ; P31422 ; |
| Cellular Localization | Cell membrane; Multi-pass membrane protein. Cell junction, synapse . Cell projection, dendrite . | | |
| Tissue specificity | Detected in brain cortex (at protein level). Widely expressed in different regions of the adult brain as well as in fetal brain. | | |
| Function | Function:Receptor for glutamate. The activity of this receptor is mediated by a G-protein that inhibits adenylate cyclase activity. May mediate suppression of neurotransmission or may be involved in synaptogenesis or synaptic stabilization.,similarity:Belongs to the G-protein coupled receptor 3 family.,subunit:Interacts with GRASP.,tissue specificity:Widely expressed in different regions of the adult brain as well as in fetal brain., | | |

| Validation Data



Immunohistochemistry analysis of paraffin-embedded human brain tissue, using mGluR2/3 Antibody. The picture on the right is blocked with the synthesized peptide.



Western blot analysis of lysates from mouse brain, using mGluR2/3 Antibody. The lane on the right is blocked with the synthesized peptide.

| Contact information

Orders: order@immunoway.com
Support: tech@immunoway.com
Telephone: 877-594-3616 (Toll Free), 408-747-0185
Website: <http://www.immunoway.com>
Address: 2200 Ringwood Ave San Jose, CA 95131 USA



Please scan the QR code
to access additional
product information:
**mGluR-2/3 Rabbit
pAb**

For Research Use Only. Not for Use in Diagnostic Procedures.

[Antibody](#) | [ELISA Kits](#) | [Protein](#) | [Reagents](#)