

mGluR1 Rabbit pAb

CatalogNo: YT2741

Key Features

Host Species

- Rabbit

Reactivity

- Human, Mouse, Rat

Applications

- IHC, IF, ELISA

MW

- 132kD (Calculated)

Isotype

- IgG

Recommended Dilution Ratios

IHC 1:100-1:300

ELISA 1:5000

IF 1:50-200

Storage

Storage*

-15°C to -25°C/1 year (Do not lower than -25°C)

Formulation

Liquid in PBS containing 50% glycerol, 0.5% BSA and 0.02% sodium azide.

Basic Information

Clonality

Polyclonal

Immunogen Information

Immunogen

The antiserum was produced against synthesized peptide derived from human GRM1. AA range: 251-300

Specificity

mGluR1 Polyclonal Antibody detects endogenous levels of mGluR1 protein.

Target Information

Gene name GRM1

Protein Name Metabotropic glutamate receptor 1

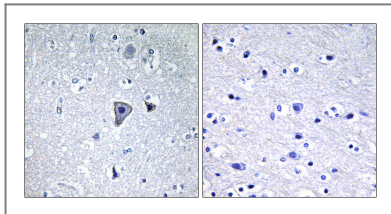
Organism	Gene ID	UniProt ID
Human	2911 ;	Q13255 ;
Mouse	14816 ;	P97772 ;
Rat	24414 ;	P23385 ;

Cellular Localization Cell membrane ; Multi-pass membrane protein .

Tissue specificity Detected in brain.

Function Function:Receptor for glutamate. The activity of this receptor is mediated by a G-protein that activates a phosphatidylinositol-calcium second messenger system. May participate in the central action of glutamate in the CNS, such as long-term potentiation in the hippocampus and long-term depression in the cerebellum.,similarity:Belongs to the G-protein coupled receptor 3 family.,subunit:Homodimer; disulfide-linked. The PPXXF motif binds HOMER1, HOMER2 and HOMER3. Interacts with SIAH1, RYR1, RYR2, ITPR1, SHANK1, SHANK3 and GRASP.,

Validation Data



Immunohistochemistry analysis of paraffin-embedded human brain tissue, using GRM1 Antibody. The picture on the right is blocked with the synthesized peptide.

Contact information

Orders: order@immunoway.com
Support: tech@immunoway.com
Telephone: 877-594-3616 (Toll Free), 408-747-0185
Website: <http://www.immunoway.com>
Address: 2200 Ringwood Ave San Jose, CA 95131 USA



Please scan the QR code to access additional product information:
mGluR1 Rabbit pAb