

MEK-6 Rabbit pAb

CatalogNo: YT2722

Key Features

Host Species

- Rabbit

Reactivity

- Human, Mouse, Rat

Applications

- WB, IHC, IF, ELISA

MW

- 37kD (Observed)

Isotype

- IgG

Recommended Dilution Ratios

WB 1:500-1:2000

IHC 1:100-1:300

IF 1:200-1:1000

ELISA 1:10000

Not yet tested in other applications.

Storage

Storage*

-15°C to -25°C/1 year (Do not lower than -25°C)

Formulation

Liquid in PBS containing 50% glycerol, 0.5% BSA and 0.02% sodium azide.

Basic Information

Clonality

Polyclonal

Immunogen Information

Immunogen

The antiserum was produced against synthesized peptide derived from human MAP2K6. AA range: 1-50

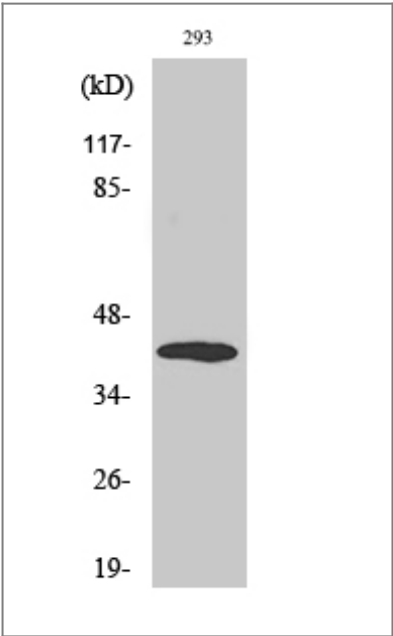
Specificity

MEK-6 Polyclonal Antibody detects endogenous levels of MEK-6 protein.

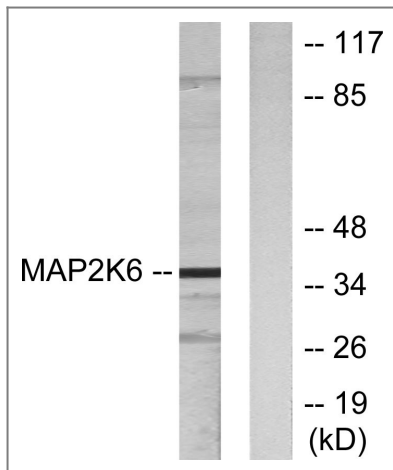
Target Information

Gene name	MAP2K6		
Protein Name	Dual specificity mitogen-activated protein kinase kinase 6		
	Organism	Gene ID	UniProt ID
	Human	5608 ;	P52564 ;
	Mouse	26399 ;	P70236 ;
Cellular Localization	Nucleus . Cytoplasm . Cytoplasm, cytoskeleton . Binds to microtubules.		
Tissue specificity	Isoform 2 is only expressed in skeletal muscle. Isoform 1 is expressed in skeletal muscle, heart, and in lesser extent in liver or pancreas.		
Function	Catalytic activity:ATP + a protein = ADP + a phosphoprotein.,enzyme regulation:Probably activated by dual phosphorylation on Ser-207 and Thr-211.,Function:Catalyzes the concomitant phosphorylation of a threonine and a tyrosine residue in MAP kinase p38 exclusively.,induction:Strongly activated by UV, anisomycin, and osmotic shock but not by phorbol esters, NGF or EGF.,PTM:Acetylation of Ser-207 and Thr-211 by Yersinia yopJ prevents phosphorylation and activation, thus blocking the MAPK signaling pathway.,PTM:Weakly autophosphorylated.,similarity:Belongs to the protein kinase superfamily.,similarity:Belongs to the protein kinase superfamily. STE Ser/Thr protein kinase family. MAP kinase kinase subfamily.,similarity:Contains 1 protein kinase domain.,subunit:Interacts with Yersinia yopJ.,tissue specificity:Isoform 2 is only expressed in skeletal muscle. Isoform 1, on the other hand, is found in skeletal muscle, heart, and in lesser extent in liver or pancreas.,		

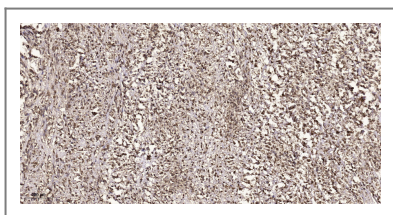
Validation Data



Western Blot analysis of various cells using MEK-6 Polyclonal Antibody



Western blot analysis of lysates from 293 cells, using MAP2K6 Antibody. The lane on the right is blocked with the synthesized peptide.



Immunohistochemical analysis of paraffin-embedded human small intestinal carcinoma tissue. 1, primary Antibody was diluted at 1:200 (4° overnight). 2, Sodium citrate pH 6.0 was used for antigen retrieval (>98°C, 20min). 3, Secondary antibody was diluted at 1:200

Contact information

Orders: order@immunoway.com
 Support: tech@immunoway.com
 Telephone: 877-594-3616 (Toll Free), 408-747-0185
 Website: <http://www.immunoway.com>
 Address: 2200 Ringwood Ave San Jose, CA 95131 USA



Please scan the QR code to access additional product information:
MEK-6 Rabbit pAb

For Research Use Only. Not for Use in Diagnostic Procedures.

[Antibody](#) | [ELISA Kits](#) | [Protein](#) | [Reagents](#)