

## MEK Kinase-6 Rabbit pAb

CatalogNo: YT2710

### Key Features

#### Host Species

- Rabbit

#### Reactivity

- Human, Mouse

#### Applications

- IHC, IF, ELISA

#### MW

- 143kD (Calculated)

#### Isotype

- IgG

### Recommended Dilution Ratios

IHC 1:100-1:300

ELISA 1:5000

IF 1:50-200

### Storage

#### Storage\*

-15°C to -25°C/1 year (Do not lower than -25°C)

#### Formulation

Liquid in PBS containing 50% glycerol, 0.5% BSA and 0.02% sodium azide.

### Basic Information

#### Clonality

Polyclonal

### Immunogen Information

#### Immunogen

The antiserum was produced against synthesized peptide derived from human MAP3K6. AA range: 281-330

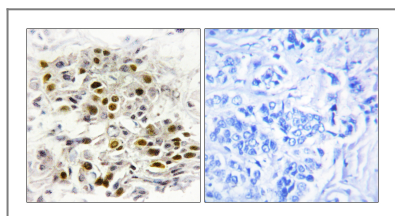
#### Specificity

MEK Kinase-6 Polyclonal Antibody detects endogenous levels of MEK Kinase-6 protein.

### Target Information

<b>Gene name</b>	MAP3K6		
<b>Protein Name</b>	Mitogen-activated protein kinase kinase kinase 6		
	<b>Organism</b>	<b>Gene ID</b>	<b>UniProt ID</b>
	Human	<a href="#">9064;</a>	<a href="#">O95382;</a>
	Mouse	<a href="#">53608;</a>	<a href="#">Q9WTR2;</a>
<b>Cellular Localization</b>	intracellular,		
<b>Tissue specificity</b>	Brain,PCR rescued clones,Skin,		
<b>Function</b>	Catalytic activity:ATP + a protein = ADP + a phosphoprotein.,cofactor:Magnesium.,enzyme regulation:Activated by phosphorylation on Thr-806. Catalytically active only when complexed with MAP3K5, with MAP3K5 supporting the stability and the active configuration of MAP3K6 and MAP3K6 activating MAP3K5 by direct phosphorylation.,Function:Component of a protein kinase signal transduction cascade. Activates the JNK, but not ERK or p38 kinase pathways.,similarity:Belongs to the protein kinase superfamily.,similarity:Belongs to the protein kinase superfamily. STE Ser/Thr protein kinase family. MAP kinase kinase kinase subfamily.,similarity:Contains 1 protein kinase domain.,subunit:Binds both upstream activators and downstream substrates in multimolecular complexes.,		

## Validation Data



Immunohistochemistry analysis of paraffin-embedded human breast carcinoma tissue, using MAP3K6 Antibody. The picture on the right is blocked with the synthesized peptide.

## Contact information

Orders: [order@immunoway.com](mailto:order@immunoway.com)  
 Support: [tech@immunoway.com](mailto:tech@immunoway.com)  
 Telephone: 877-594-3616 (Toll Free), 408-747-0185  
 Website: <http://www.immunoway.com>  
 Address: 2200 Ringwood Ave San Jose, CA 95131 USA



Please scan the QR code  
 to access additional  
 product information:  
**MEK Kinase-6**  
**Rabbit pAb**