

ME2 Rabbit pAb

CatalogNo: YT2694

Key Features

Host Species

- Rabbit

Reactivity

- Human, Mouse

Applications

- WB, IHC, IF, ELISA

MW

- 65kD (Observed)

Isotype

- IgG

Recommended Dilution Ratios

WB 1:500-1:2000

IHC 1:100-1:300

ELISA 1:40000

IF 1:50-200

Storage

Storage*

-15°C to -25°C/1 year (Do not lower than -25°C)

Formulation

Liquid in PBS containing 50% glycerol, 0.5% BSA and 0.02% sodium azide.

Basic Information

Clonality

Polyclonal

Immunogen Information

Immunogen

The antiserum was produced against synthesized peptide derived from human ME2. AA range: 201-250

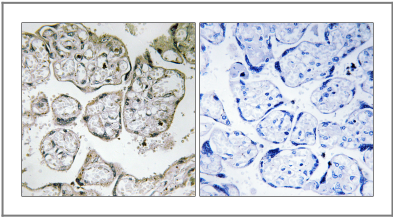
Specificity

ME2 Polyclonal Antibody detects endogenous levels of ME2 protein.

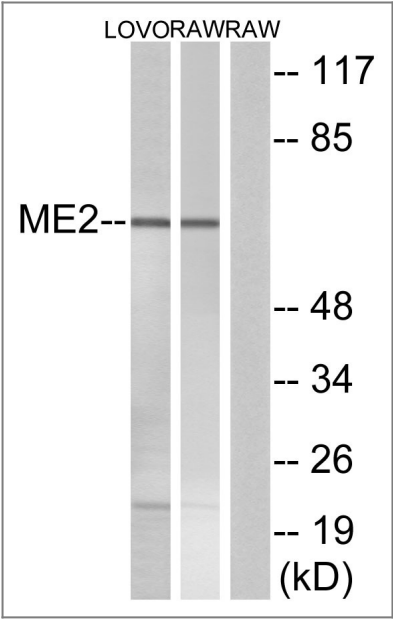
Target Information

Gene name	ME2		
Protein Name	NAD-dependent malic enzyme mitochondrial		
	Organism	Gene ID	UniProt ID
	Human	4200 ;	P23368 ;
	Mouse		Q99KE1 ;
Cellular Localization	Mitochondrion matrix .		
Tissue specificity	B-cell,Placenta,Platelet,		
Function	Catalytic activity:(S)-malate + NAD(+) = pyruvate + CO(2) + NADH.,cofactor:Divalent metal cations. Prefers magnesium or manganese.,enzyme regulation:Subject to allosteric activation by fumarate.,miscellaneous:This isoenzyme can also use NADP(+) but is more effective with NAD(+).,similarity:Belongs to the malic enzymes family.,subunit:Homotetramer.,		

| Validation Data



Immunohistochemistry analysis of paraffin-embedded human placenta tissue, using ME2 Antibody. The picture on the right is blocked with the synthesized peptide.



| Contact information

Orders: order@immunoway.com
Support: tech@immunoway.com
Telephone: 877-594-3616 (Toll Free), 408-747-0185
Website: http://www.immunoway.com
Address: 2200 Ringwood Ave San Jose, CA 95131 USA



Please scan the QR code
to access additional
product information:
ME2 Rabbit pAb

For Research Use Only. Not for Use in Diagnostic Procedures.

[Antibody](#) | [ELISA Kits](#) | [Protein](#) | [Reagents](#)