

MCT14 Rabbit pAb

CatalogNo: YT2684

Key Features

Host Species

- Rabbit

Reactivity

- Human, Mouse

Applications

- WB, ELISA

MW

- 48kD (Observed)

Isotype

- IgG

Recommended Dilution Ratios

WB 1:500-1:2000

ELISA 1:10000

Not yet tested in other applications.

Storage

Storage*

-15°C to -25°C/1 year (Do not lower than -25°C)

Formulation

Liquid in PBS containing 50% glycerol, 0.5% BSA and 0.02% sodium azide.

Basic Information

Clonality

Polyclonal

Immunogen Information

Immunogen

The antiserum was produced against synthesized peptide derived from human MOT14. AA range: 131-180

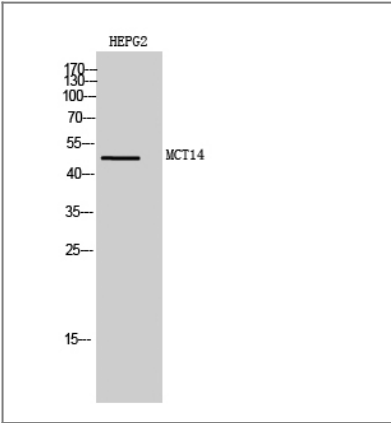
Specificity

MCT14 Polyclonal Antibody detects endogenous levels of MCT14 protein.

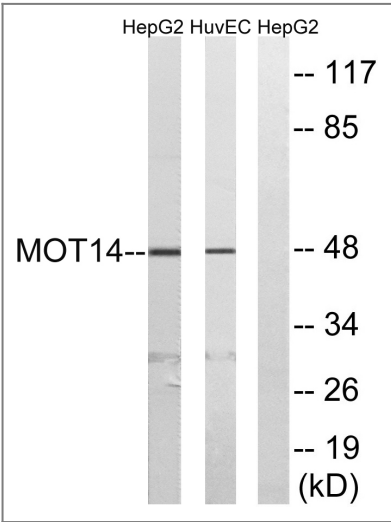
Target Information

Gene name	SLC16A14		
Protein Name	Monocarboxylate transporter 14		
	Organism	Gene ID	UniProt ID
	Human	151473 ;	Q7RTX9 ;
	Mouse	71781 ;	Q8K1C7 ;
Cellular Localization	Cell membrane ; Multi-pass membrane protein .		
Tissue specificity	Alzheimer cortex,Brain,Brain cortex,Lung,		
Function	Function:Proton-linked monocarboxylate transporter. Catalyzes the rapid transport across the plasma membrane of many monocarboxylates.,similarity:Belongs to the major facilitator superfamily. Monocarboxylate porter (TC 2.A.1.13) family.,		

| Validation Data



Western Blot analysis of HEPG2 cells using MCT14 Polyclonal Antibody diluted at 1:1000



Western blot analysis of lysates from HUVEC and HepG2 cells, using MOT14 Antibody. The lane on the right is blocked with the synthesized peptide.

| Contact information

Orders: order@immunoway.com
Support: tech@immunoway.com
Telephone: 877-594-3616 (Toll Free), 408-747-0185
Website: <http://www.immunoway.com>
Address: 2200 Ringwood Ave San Jose, CA 95131 USA



Please scan the QR code
to access additional
product information:
MCT14 Rabbit pAb

For Research Use Only. Not for Use in Diagnostic Procedures.

[Antibody](#) | [ELISA Kits](#) | [Protein](#) | [Reagents](#)