

MC2-R Rabbit pAb

CatalogNo: YT2674

| Key Features

Host Species

- Rabbit

Reactivity

- Human, Mouse

Applications

- WB, IF, ELISA, IHC

MW

- 34kD (Observed)

Isotype

- IgG

| Recommended Dilution Ratios

WB 1:500-2000

IHC 1:50-300

IF 1:200-1:1000

ELISA 1:2000-20000

| Storage

Storage*

-15°C to -25°C/1 year (Do not lower than -25°C)

Formulation

Liquid in PBS containing 50% glycerol, 0.5% BSA and 0.02% sodium azide.

| Basic Information

Clonality

Polyclonal

| Immunogen Information

Immunogen

The antiserum was produced against synthesized peptide derived from human ACTHR. AA range: 248-297

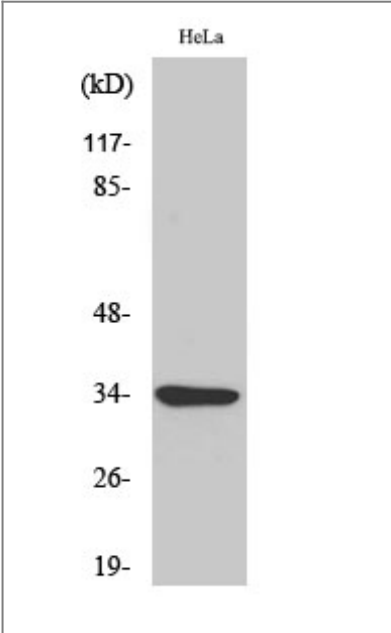
Specificity

MC2-R Polyclonal Antibody detects endogenous levels of MC2-R protein.

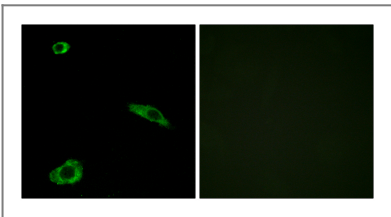
| Target Information

Gene name	MC2R		
Protein Name	Adrenocorticotrophic hormone receptor		
	Organism	Gene ID	UniProt ID
	Human	4158;	Q01718;
	Mouse	17200;	Q64326;
Cellular Localization	Cell membrane; Multi-pass membrane protein.		
Tissue specificity	Melanocytes and corticoadrenal tissue.		
Function	Disease:Defects in MC2R are the cause of glucocorticoid deficiency type 1 (GCCD1) [MIM:202200]; also known as familial glucocorticoid deficiency type 1 (FGD1). GCCD1 is an autosomal recessive disorder due to congenital insensitivity or resistance to adrenocorticotropin (ACTH). It is characterized by progressive primary adrenal insufficiency, without mineralocorticoid deficiency.,Function:Receptor for ACTH. This receptor is mediated by G proteins (G(s)) which activate adenylate cyclase.,similarity:Belongs to the G-protein coupled receptor 1 family.,subunit:Interacts with FALP/MRAP.,tissue specificity:Melanocytes and corticoadrenal tissue.,		

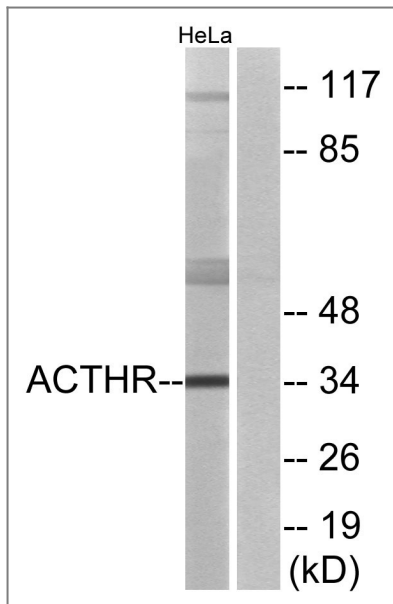
| Validation Data



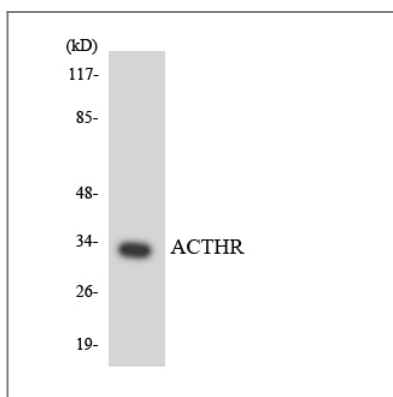
Western Blot analysis of various cells using MC2-R Polyclonal Antibody



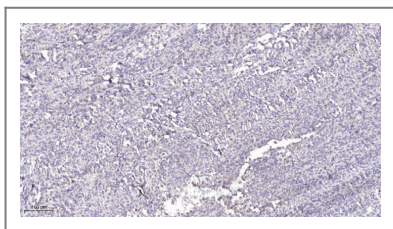
Immunofluorescence analysis of MCF7 cells, using ACTHR Antibody. The picture on the right is blocked with the synthesized peptide.



Western blot analysis of lysates from HeLa cells, using ACTHR Antibody. The lane on the right is blocked with the synthesized peptide.



Western blot analysis of the lysates from COLO205 cells using ACTHR antibody.



Immunohistochemical analysis of paraffin-embedded human Colon cancer. 1, Antibody was diluted at 1:200(4° overnight). 2, Tris-EDTA,pH9.0 was used for antigen retrieval. 3,Secondary antibody was diluted at 1:200(room temperature, 45min).

Contact information

Orders: order@immunoway.com
 Support: tech@immunoway.com
 Telephone: 877-594-3616 (Toll Free), 408-747-0185
 Website: <http://www.immunoway.com>
 Address: 2200 Ringwood Ave San Jose, CA 95131 USA



Please scan the QR code to access additional product information:
MC2-R Rabbit pAb