

## MAPKAPK-2 Rabbit pAb

CatalogNo: YT2640

### | Key Features

#### Host Species

- Rabbit

#### Reactivity

- Human, Mouse, Rat, Monkey

#### Applications

- WB, IHC, IF, ELISA

#### MW

- 46kD (Observed)

#### Isotype

- IgG

### | Recommended Dilution Ratios

**WB 1:500-1:2000**

**IHC 1:100-1:300**

**ELISA 1:5000**

**IF 1:50-200**

### | Storage

#### Storage\*

-15°C to -25°C/1 year (Do not lower than -25°C)

#### Formulation

Liquid in PBS containing 50% glycerol, 0.5% BSA and 0.02% sodium azide.

### | Basic Information

#### Clonality

Polyclonal

### | Immunogen Information

#### Immunogen

The antiserum was produced against synthesized peptide derived from human MAPKAPK2. AA range: 238-287

#### Specificity

MAPKAPK-2 Polyclonal Antibody detects endogenous levels of MAPKAPK-2 protein.

### | Target Information

**Gene name** MAPKAPK2

**Protein Name** MAP kinase-activated protein kinase 2

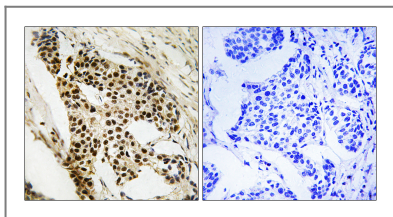
Organism	Gene ID	UniProt ID
Human	<a href="#">9261;</a>	<a href="#">P49137;</a>
Mouse	<a href="#">17164;</a>	<a href="#">P49138;</a>

**Cellular Localization** Cytoplasm . Nucleus . Phosphorylation and subsequent activation releases the autoinhibitory helix, resulting in the export from the nucleus into the cytoplasm.

**Tissue specificity** Expressed in all tissues examined.

**Function** Catalytic activity:ATP + a protein = ADP + a phosphoprotein.,enzyme regulation:Seems to be activated by two distinct pathways: the first involves the stimulation of p42/p44 MAPK by growth factors, the second, triggered by stress and heat shock, depends on the activation of MPK2 and upstream MAPKK/MAPKKK.,Function:Its physiological substrate seems to be the small heat shock protein (HSP27/HSP25). In vitro can phosphorylate glycogen synthase at 'Ser-7' and tyrosine hydroxylase (on 'Ser-19' and 'Ser-40'). This kinase phosphorylates Ser in the peptide sequence, Hyd-X-R-X(2)-S, where Hyd is a large hydrophobic residue (By similarity). Mediates both ERK and p38 MAPK/MAPK14 dependent neutrophil responses. Participates in TNF alpha-stimulated exocytosis of secretory vesicles in neutrophils. Plays a role in phagocytosis-induced respiratory burst activity.,PTM:Phosphorylated and activated by MAP kinase.,similarity:Belongs to the protein kinase superfamily. CAMK Ser/Thr protein kinase family.,similarity:Contains 1 protein kinase domain.,subunit:Interacts with PHC2.,tissue specificity:Expressed in all tissues examined.,

## Validation Data



Immunohistochemistry analysis of paraffin-embedded human breast carcinoma tissue, using MAPKAPK2 Antibody. The picture on the right is blocked with the synthesized peptide.

## Contact information

Orders: [order@immunoway.com](mailto:order@immunoway.com)  
Support: [tech@immunoway.com](mailto:tech@immunoway.com)  
Telephone: 877-594-3616 (Toll Free), 408-747-0185  
Website: <http://www.immunoway.com>  
Address: 2200 Ringwood Ave San Jose, CA 95131 USA



Please scan the QR code to access additional product information:  
**MAPKAPK-2 Rabbit pAb**

