

MAN1B1 Rabbit pAb

CatalogNo: YT2633

Key Features

Host Species

- Rabbit

Reactivity

- Human,Rat,Mouse,

Applications

- WB,ELISA

MW

- 80kD (Observed)

Isotype

- IgG

Recommended Dilution Ratios

WB 1:500-1:2000

ELISA 1:10000

Not yet tested in other applications.

Storage

Storage*

-15°C to -25°C/1 year(Do not lower than -25°C)

Formulation

Liquid in PBS containing 50% glycerol, 0.5% BSA and 0.02% sodium azide.

Basic Information

Clonality

Polyclonal

Immunogen Information

Immunogen

Synthesized peptide derived from MAN1B1 . at AA range: 100-180

Specificity

MAN1B1 Polyclonal Antibody detects endogenous levels of MAN1B1 protein.

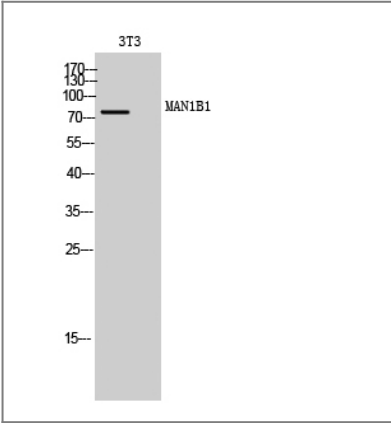
Target Information

Gene name

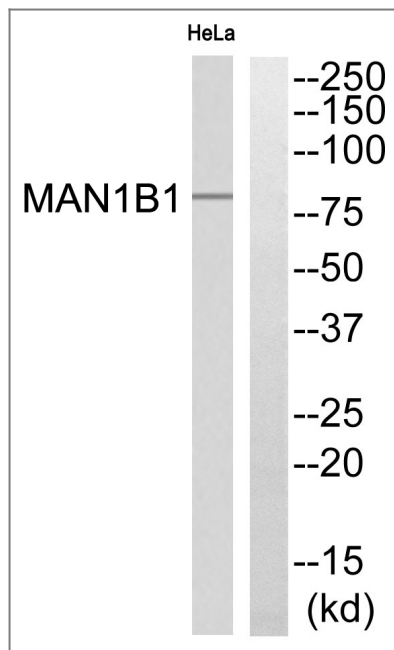
MAN1B1

Protein Name	Endoplasmic reticulum mannosyl-oligosaccharide 1,2-alpha-mannosidase		
	Organism	Gene ID	UniProt ID
	Human	11253 ;	Q9UKM7 ;
	Mouse		A2AJ15 ;
Cellular Localization	Endoplasmic reticulum membrane ; Single-pass type II membrane protein .		
Tissue specificity	Widely expressed.		
Function	Catalytic activity:Hydrolysis of the terminal (1->2)-linked alpha-D-mannose residues in the oligo-mannose oligosaccharide Man(9)(GlcNAc)(2).,cofactor:Calcium.,enzyme regulation:Inhibited by both 1-deoxymannojirimycin and kifunensine.,Function:Involved in the maturation of Asn-linked oligosaccharides. Trim a single alpha-1,2-linked mannose residue from Man(9)GlcNAc(2) to produce Man(8)GlcNAc(2). The only product is the Man(8)GlcNAc(2) isomer B, the form lacking the middle-arm terminal alpha 1,2-mannose. It may be involved in glycoprotein quality control since it is important to target misfolded glycoproteins for degradation.,pathway:Protein modification; protein glycosylation.,similarity:Belongs to the glycosyl hydrolase 47 family.,tissue specificity:Widely expressed.,		

Validation Data



Western Blot analysis of 3T3 cells using MAN1B1 Polyclonal Antibody



Western blot analysis of MAN1B1 Antibody. The lane on the right is blocked with the MAN1B1 peptide.

Contact information

Orders: order@immunoway.com
Support: tech@immunoway.com
Telephone: 877-594-3616 (Toll Free), 408-747-0185
Website: <http://www.immunoway.com>
Address: 2200 Ringwood Ave San Jose, CA 95131 USA



Please scan the QR code to access additional product information:
MAN1B1 Rabbit pAb

For Research Use Only. Not for Use in Diagnostic Procedures.

[Antibody](#) | [ELISA Kits](#) | [Protein](#) | [Reagents](#)