

MAGI-2 Rabbit pAb

CatalogNo: YT2627

Orthogonal Validated 

Key Features

Host Species

- Rabbit

Reactivity

- Human, Mouse, Rat

Applications

- WB, IHC, IF, ELISA

MW

- 156kD (Observed)

Isotype

- IgG

Recommended Dilution Ratios

WB 1:500-1:2000

IHC 1:100-1:300

ELISA 1:20000

IF 1:50-200

Storage

Storage*

-15°C to -25°C/1 year (Do not lower than -25°C)

Formulation

Liquid in PBS containing 50% glycerol, 0.5% BSA and 0.02% sodium azide.

Basic Information

Clonality

Polyclonal

Immunogen Information

Immunogen

The antiserum was produced against synthesized peptide derived from human MAGI2. AA range: 221-270

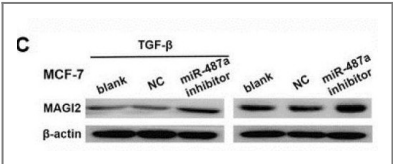
Specificity

MAGI-2 Polyclonal Antibody detects endogenous levels of MAGI-2 protein.

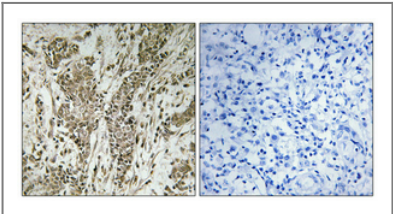
Target Information

Gene name	MAGI2		
Protein Name	Membrane-associated guanylate kinase WW and PDZ domain-containing protein 2		
	Organism	Gene ID	UniProt ID
	Human	9863 ;	Q86UL8 ;
	Mouse	50791 ;	Q9WVQ1 ;
	Rat	113970 ;	O88382 ;
Cellular Localization	Cytoplasm . Late endosome . Cell junction, synapse, synaptosome . Cell membrane ; Peripheral membrane protein . Localized diffusely in the cytoplasm before nerve growth factor (NGF) stimulation. Recruited to late endosomes after NGF stimulation. Membrane-associated in synaptosomes (By similarity). .		
Tissue specificity	Specifically expressed in brain.		
Function	Function:Seems to act as scaffold molecule at synaptic junctions by assembling neurotransmitter receptors and cell adhesion proteins. May play a role in regulating activin-mediated signaling in neuronal cells. Enhances the ability of PTEN to suppress AKT1 activation.,similarity:Belongs to the MAGUK family.,similarity:Contains 1 guanylate kinase-like domain.,similarity:Contains 2 WW domains.,similarity:Contains 6 PDZ (DHR) domains.,subcellular location:Membrane-associated in synaptosomes.,subunit:Interacts via its WW domains with DRPLA. Interacts via its second PDZ domain with PTEN unphosphorylated C-terminus; this interaction diminishes the degradation rate of PTEN (By similarity). Interacts through its guanylate kinase domain with DLGAP1 (By similarity). Interacts through the PDZ domains with GRIN2A, GRID2 and NLGN1 (By similarity). Interacts with CTNND2, CTNNB1, MAGUIN-1, ACVR2A, SMAD2 and SMAD3 (By similarity). Part of a complex consisting of AIP1, ACVR2A, ACVR1B and SMAD3 (By similarity). May interact with HTR2A (By similarity). Interacts with IGSF9, RAPGEF2 and HTR4 (By similarity). Interacts with DDN.,tissue specificity:Specifically expressed in brain.,		

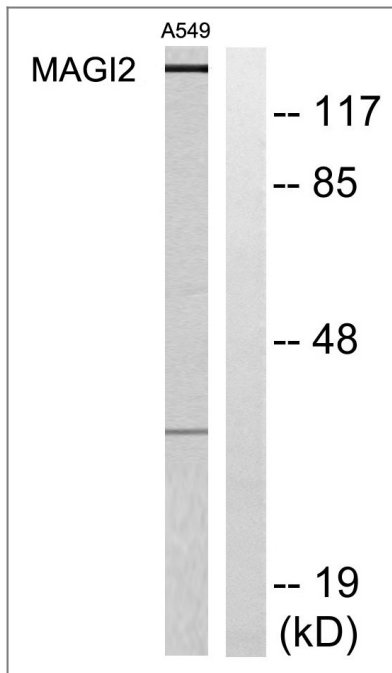
Validation Data



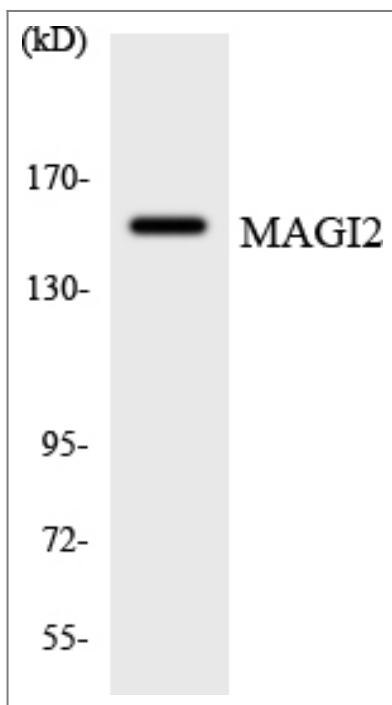
Ma, Mengtao, et al. "miR-487a promotes TGF-β1-induced EMT, the migration and invasion of breast cancer cells by directly targeting MAGI2." International journal of biological sciences 12.4 (2016): 397.



Immunohistochemical analysis of paraffin-embedded Human breast cancer. Antibody was diluted at 1:100(4° overnight). High-pressure and temperature Tris-EDTA,pH8.0 was used for antigen retrieval. Negetive contrl (right) obtaned from antibody was pre-absorbed by immunogen peptide.



Western blot analysis of lysates from A549 cells, using MAGI2 Antibody. The lane on the right is blocked with the synthesized peptide.



Western blot analysis of the lysates from 293 cells using MAGI2 antibody.

Contact information

Orders: order@immunoway.com
 Support: tech@immunoway.com
 Telephone: 877-594-3616 (Toll Free), 408-747-0185
 Website: <http://www.immunoway.com>
 Address: 2200 Ringwood Ave San Jose, CA 95131 USA



Please scan the QR code to access additional product information:
MAGI-2 Rabbit pAb

