

MafF Rabbit pAb

CatalogNo: YT2622

Key Features

Host Species

- Rabbit

Reactivity

- Human, Mouse

Applications

- IHC, IF, ELISA

MW

- 18kD (Calculated)

Isotype

- IgG

Recommended Dilution Ratios

IHC 1:100-1:300

ELISA 1:10000

IF 1:50-200

Storage

Storage*

-15°C to -25°C/1 year (Do not lower than -25°C)

Formulation

Liquid in PBS containing 50% glycerol, 0.5% BSA and 0.02% sodium azide.

Basic Information

Clonality

Polyclonal

Immunogen Information

Immunogen

The antiserum was produced against synthesized peptide derived from human MAFF. AA range: 51-100

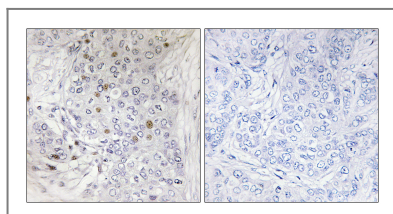
Specificity

MafF Polyclonal Antibody detects endogenous levels of MafF protein.

Target Information

Gene name	MAFF		
Protein Name	Transcription factor MafF		
	Organism	Gene ID	UniProt ID
	Human	23764;	Q9ULX9;
	Mouse	17133;	O54791;
Cellular Localization	Nucleus.		
Tissue specificity	Expressed in the term myometrium and kidney.		
Function	<p>Function:Interacts with the upstream promoter region of the oxytocin receptor gene. May be a transcriptional enhancer in the up-regulation of the oxytocin receptor gene at parturition. Since it lacks a putative transactivation domain, it may behave as a transcriptional repressor when it dimerize among himself. May also serve as a transcriptional activator by dimerizing with other (usually larger) basic-zipper proteins and recruiting them to specific DNA-binding sites. May be involved in the cellular stress response.,induction:By oxidative stress.,similarity:Belongs to the bZIP family.,similarity:Belongs to the bZIP family. Maf subfamily.,similarity:Contains 1 bZIP domain.,subunit:Monomer and homo- or heterodimer. Interacts with MIP.,tissue specificity:Expressed in the term myometrium and kidney.,</p>		

Validation Data



Immunohistochemistry analysis of paraffin-embedded human breast carcinoma tissue, using MAFF Antibody. The picture on the right is blocked with the synthesized peptide.

Contact information

Orders: order@immunoway.com
 Support: tech@immunoway.com
 Telephone: 877-594-3616 (Toll Free), 408-747-0185
 Website: <http://www.immunoway.com>
 Address: 2200 Ringwood Ave San Jose, CA 95131 USA



Please scan the QR code to access additional product information:
MafF Rabbit pAb