

## mAChR M4 Rabbit pAb

CatalogNo: YT2613

### | Key Features

#### Host Species

- Rabbit

#### Reactivity

- Human, Mouse, Rat

#### Applications

- WB, IF, ELISA

#### MW

- 53kD (Observed)

#### Isotype

- IgG

### | Recommended Dilution Ratios

**WB 1:500-1:2000**

**IF 1:200-1:1000**

**ELISA 1:10000**

**Not yet tested in other applications.**

### | Storage

#### Storage\*

-15°C to -25°C/1 year (Do not lower than -25°C)

#### Formulation

Liquid in PBS containing 50% glycerol, 0.5% BSA and 0.02% sodium azide.

### | Basic Information

#### Clonality

Polyclonal

### | Immunogen Information

#### Immunogen

The antiserum was produced against synthesized peptide derived from human CHR M4. AA range: 236-285

#### Specificity

mAChR M4 Polyclonal Antibody detects endogenous levels of mAChR M4 protein.

### | Target Information

**Gene name** CHRM4

**Protein Name** Muscarinic acetylcholine receptor M4

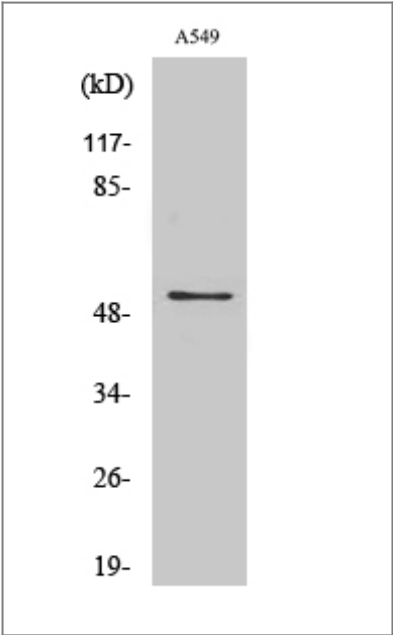
Organism	Gene ID	UniProt ID
Human	<a href="#">1132</a> ;	<a href="#">P08173</a> ;
Mouse	<a href="#">12672</a> ;	<a href="#">P32211</a> ;
Rat	<a href="#">25111</a> ;	<a href="#">P08485</a> ;

**Cellular Localization** Cell membrane; Multi-pass membrane protein. Cell junction, synapse, postsynaptic cell membrane; Multi-pass membrane protein.

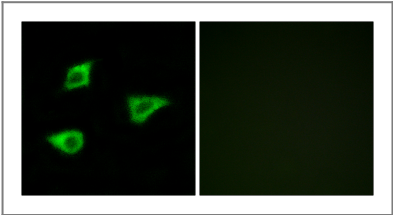
**Tissue specificity** Brain,

**Function** Function:The muscarinic acetylcholine receptor mediates various cellular responses, including inhibition of adenylate cyclase, breakdown of phosphoinositides and modulation of potassium channels through the action of G proteins. Primary transducing effect is inhibition of adenylate cyclase.,similarity:Belongs to the G-protein coupled receptor 1 family.,

## Validation Data



Western Blot analysis of various cells using mACHR M4 Polyclonal Antibody



Immunofluorescence analysis of LOVO cells, using CHRM4 Antibody. The picture on the right is blocked with the synthesized peptide.

## | Contact information

Orders: order@immunoway.com  
Support: tech@immunoway.com  
Telephone: 877-594-3616 (Toll Free), 408-747-0185  
Website: <http://www.immunoway.com>  
Address: 2200 Ringwood Ave San Jose, CA 95131 USA



Please scan the QR code  
to access additional  
product information:  
**mAChR M4 Rabbit  
pAb**

---

For Research Use Only. Not for Use in Diagnostic Procedures.

[Antibody](#) | [ELISA Kits](#) | [Protein](#) | [Reagents](#)