

LUCA15 Rabbit pAb

CatalogNo: YT2604

Key Features

Host Species

- Rabbit

Reactivity

- Human, Mouse

Applications

- WB, IHC, IF, ELISA

MW

- 92kD (Observed)

Isotype

- IgG

Recommended Dilution Ratios

WB 1:500-1:2000

IHC 1:100-1:300

ELISA 1:10000

IF 1:50-200

Storage

Storage*

-15°C to -25°C/1 year (Do not lower than -25°C)

Formulation

Liquid in PBS containing 50% glycerol, 0.5% BSA and 0.02% sodium azide.

Basic Information

Clonality

Polyclonal

Immunogen Information

Immunogen

The antiserum was produced against synthesized peptide derived from human RBM5. AA range: 226-275

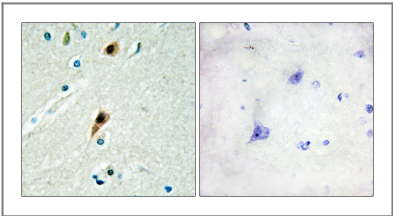
Specificity

LUCA15 Polyclonal Antibody detects endogenous levels of LUCA15 protein.

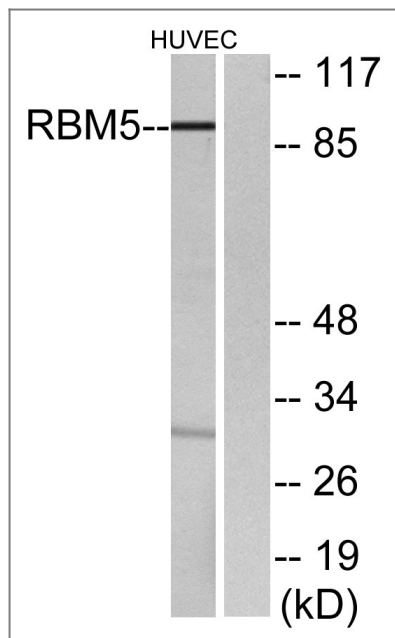
Target Information

Gene name	RBM5		
Protein Name	RNA-binding protein 5		
	Organism	Gene ID	UniProt ID
	Human	10181 ;	P52756 ;
	Mouse	83486 ;	Q91YE7 ;
Cellular Localization	Nucleus .		
Tissue specificity	Isoform 5 is widely expressed in normal tissues and is expressed at increased levels in T-leukemic cell lines.		
Function	<p>Function:Component of the spliceosome A complex. Regulates alternative splicing of a number of mRNAs. May modulate splice site pairing after recruitment of the U1 and U2 snRNPs to the 5' and 3' splice sites of the intron. May both positively and negatively regulate apoptosis by regulating the alternative splicing of several genes involved in this process, including FAS and CASP2/caspase-2. In the case of FAS, promotes exclusion of exon 6 thereby producing a soluble form of FAS that inhibits apoptosis. In the case of CASP2/caspase-2, promotes exclusion of exon 9 thereby producing a catalytically active form of CASP2/Caspase-2 that induces apoptosis.,sequence Caution:Wrong choice of CDS.,similarity:Belongs to the RBM5/RBM10 family.,similarity:Contains 1 C2H2-type zinc finger.,similarity:Contains 1 G-patch domain.,similarity:Contains 1 RanBP2-type zinc finger.,similarity:Contains 2 RRM (RNA recognition motif) domains.,subunit:Component of the spliceosome A complex (also known as the prespliceosome). Appears to dissociate from the spliceosome upon formation of the spliceosome B complex (also known as the precatalytic spliceosome), in which the heterotrimeric U4/U6.U5 snRNPs are bound. Interacts with U2AF2; this interaction is direct. Also interacts with ACIN1, PRPF8, SFRS3, SNRPB, SNRPN, SNRNP70 and SNRNP200; these interactions may be indirect.,tissue specificity:Isoform 5 is widely expressed in normal tissues and is expressed at increased levels in T-leukaemic cell lines.,</p>		

| Validation Data



Immunohistochemistry analysis of paraffin-embedded human brain tissue, using RBM5 Antibody. The picture on the right is blocked with the synthesized peptide.



Western blot analysis of lysates from HUVEC cells, using RBM5 Antibody. The lane on the right is blocked with the synthesized peptide.

Contact information

Orders: order@immunoway.com
Support: tech@immunoway.com
Telephone: 877-594-3616 (Toll Free), 408-747-0185
Website: <http://www.immunoway.com>
Address: 2200 Ringwood Ave San Jose, CA 95131 USA



Please scan the QR code to access additional product information:
LUCA15 Rabbit pAb

For Research Use Only. Not for Use in Diagnostic Procedures.

[Antibody](#) | [ELISA Kits](#) | [Protein](#) | [Reagents](#)