

## LUC7L2 Rabbit pAb

CatalogNo: YT2603

### | Key Features

#### Host Species

- Rabbit

#### Reactivity

- Human, Mouse, Rat

#### Applications

- WB, IHC, IF, ELISA

#### MW

- 47kD (Observed)

#### Isotype

- IgG

### | Recommended Dilution Ratios

**WB 1:500-1:2000**

**IHC 1:100-1:300**

**ELISA 1:40000**

**IF 1:50-200**

### | Storage

#### Storage\*

-15°C to -25°C/1 year (Do not lower than -25°C)

#### Formulation

Liquid in PBS containing 50% glycerol, 0.5% BSA and 0.02% sodium azide.

### | Basic Information

#### Clonality

Polyclonal

### | Immunogen Information

#### Immunogen

The antiserum was produced against synthesized peptide derived from human LUC7L2. AA range:129-178

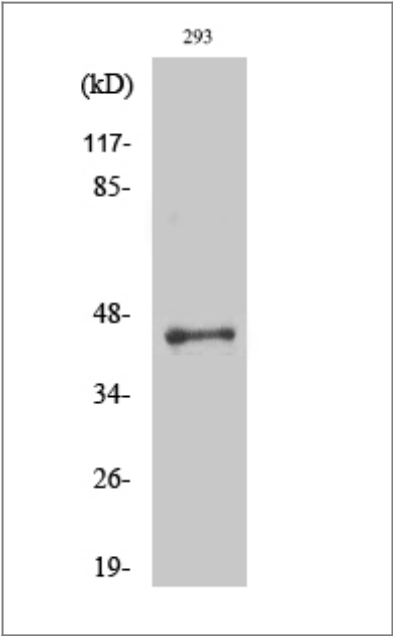
#### Specificity

LUC7L2 Polyclonal Antibody detects endogenous levels of LUC7L2 protein.

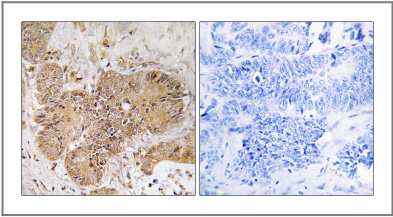
### | Target Information

Gene name	LUC7L2		
Protein Name	Putative RNA-binding protein Luc7-like 2		
	Organism	Gene ID	UniProt ID
	Human	<a href="#">51631</a> ;	<a href="#">Q9Y383</a> ;
	Mouse	<a href="#">192196</a> ;	<a href="#">Q7TNC4</a> ;
Cellular Localization	Nucleus speckle . Nucleus, nucleoplasm . Colocalizes with SCNM1 and SNRNP70 in nuclear speckles. .		
Tissue specificity	Brain,Epithelium,Skin,Uterus,		
Function	Function:May bind to RNA via its Arg/Ser-rich domain.,PTM:Phosphorylated upon DNA damage, probably by ATM or ATR.,similarity:Belongs to the Luc7 family.,similarity:Contains 1 C2H2-type zinc finger.,		

Validation Data



Western Blot analysis of various cells using LUC7L2 Polyclonal Antibody



Immunohistochemistry analysis of paraffin-embedded human colon carcinoma tissue, using LUC7L2 Antibody. The picture on the right is blocked with the synthesized peptide.

Contact information

Orders: [order@immunoway.com](mailto:order@immunoway.com)  
Support: [tech@immunoway.com](mailto:tech@immunoway.com)  
Telephone: 877-594-3616 (Toll Free), 408-747-0185  
Website: <http://www.immunoway.com>  
Address: 2200 Ringwood Ave San Jose, CA 95131 USA



Please scan the QR code  
to access additional  
product information:  
**LUC7L2 Rabbit pAb**

---

For Research Use Only. Not for Use in Diagnostic Procedures.

[Antibody](#) | [ELISA Kits](#) | [Protein](#) | [Reagents](#)