

L-type Ca++ CP γ 7 Rabbit pAb

CatalogNo: YT2600

Key Features

Host Species

- Rabbit

Reactivity

- Human, Mouse, Rat

Applications

- WB, ELISA

MW

- 40kD (Observed)

Isotype

- IgG

Recommended Dilution Ratios

WB 1:500-1:2000

ELISA 1:20000

Not yet tested in other applications.

Storage

Storage*

-15°C to -25°C/1 year (Do not lower than -25°C)

Formulation

Liquid in PBS containing 50% glycerol, 0.5% BSA and 0.02% sodium azide.

Basic Information

Clonality

Polyclonal

Immunogen Information

Immunogen

The antiserum was produced against synthesized peptide derived from human CACNG7. AA range: 198-247

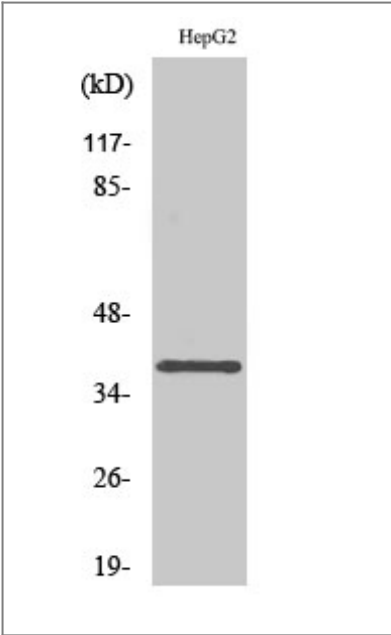
Specificity

L-type Ca++ CP γ 7 Polyclonal Antibody detects endogenous levels of L-type Ca++ CP γ 7 protein.

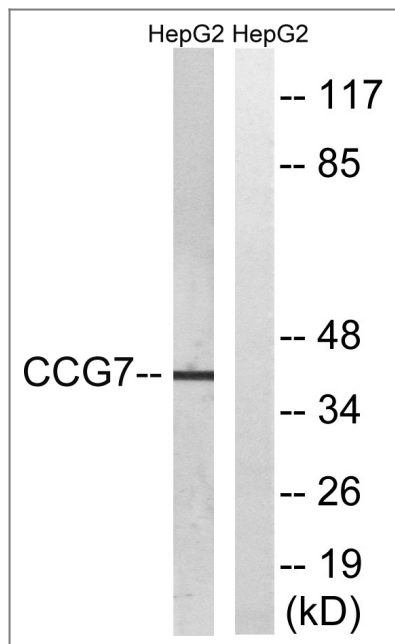
Target Information

Gene name	CACNG7		
Protein Name	Voltage-dependent calcium channel gamma-7 subunit		
	Organism	Gene ID	UniProt ID
	Human	59284 ;	P62955 ;
	Mouse	81904 ;	P62956 ;
	Rat	140728 ;	P62957 ;
Cellular Localization	Cell membrane ; Multi-pass membrane protein .		
Tissue specificity	Detected in heart left ventricle (PubMed:21127204). Widely expressed.		
Function	Function:Thought to stabilize the calcium channel in an inactivated (closed) state.,similarity:Belongs to the PMP-22/EMP/MP20 family. CACNG subfamily.,subunit:The L-type calcium channel is composed of five subunits: alpha-1, alpha-2/delta, beta and gamma.,tissue specificity:Widely expressed.,		

| Validation Data



Western Blot analysis of various cells using L-type Ca++ CP γ7 Polyclonal Antibody diluted at 1:1000



Western blot analysis of lysates from HepG2 cells, using CACNG7 Antibody. The lane on the right is blocked with the synthesized peptide.

Contact information

Orders: order@immunoway.com
 Support: tech@immunoway.com
 Telephone: 877-594-3616 (Toll Free), 408-747-0185
 Website: <http://www.immunoway.com>
 Address: 2200 Ringwood Ave San Jose, CA 95131 USA



Please scan the QR code
 to access additional
 product information:
L-type Ca++ CP γ7
Rabbit pAb

For Research Use Only. Not for Use in Diagnostic Procedures.

[Antibody](#) | [ELISA Kits](#) | [Protein](#) | [Reagents](#)