

## LTK Rabbit pAb

CatalogNo: YT2598

### Key Features

#### Host Species

- Rabbit

#### Reactivity

- Human, Mouse

#### Applications

- WB, IHC, IF, ELISA

#### MW

- 92kD (Observed)

#### Isotype

- IgG

### Recommended Dilution Ratios

**WB 1:500-1:2000**

**IHC 1:100-1:300**

**IF 1:200-1:1000**

**ELISA 1:5000**

**Not yet tested in other applications.**

### Storage

#### Storage\*

-15°C to -25°C/1 year (Do not lower than -25°C)

#### Formulation

Liquid in PBS containing 50% glycerol, 0.5% BSA and 0.02% sodium azide.

### Basic Information

#### Clonality

Polyclonal

### Immunogen Information

#### Immunogen

The antiserum was produced against synthesized peptide derived from human LTK. AA range: 206-255

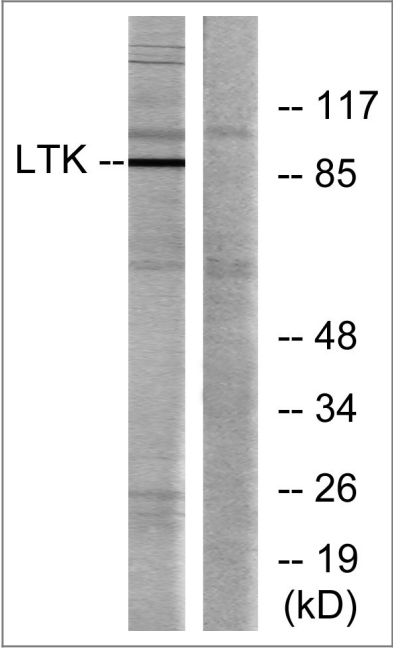
#### Specificity

LTK Polyclonal Antibody detects endogenous levels of LTK protein.

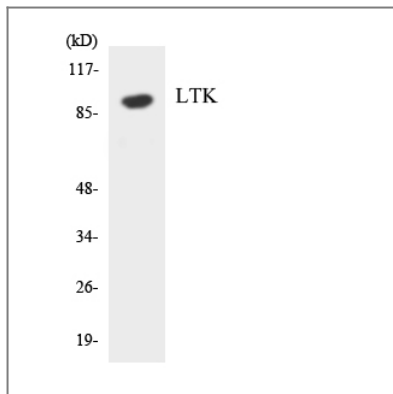
## | Target Information

Gene name	LTK TYK1		
Protein Name	Leukocyte tyrosine kinase receptor		
	Organism	Gene ID	UniProt ID
	Human	<a href="#">4058</a> ;	<a href="#">P29376</a> ;
	Mouse	<a href="#">17005</a> ;	<a href="#">P08923</a> ;
Cellular Localization	Cell membrane ; Single-pass type I membrane protein .		
Tissue specificity	Expressed in non-hematopoietic cell lines and T- and B-cell lines.		
Function	Alternative products:Additional isoforms seem to exist,Catalytic activity:ATP + a [protein]-L-tyrosine = ADP + a [protein]-L-tyrosine phosphate.,Function:The exact function of this protein is not known. It is probably a receptor with a tyrosine-protein kinase activity.,similarity:Belongs to the protein kinase superfamily. Tyr protein kinase family. Insulin receptor subfamily.,similarity:Contains 1 protein kinase domain.,tissue specificity:Expressed in non-hematopoietic cell lines and T- and B-cell lines.,		

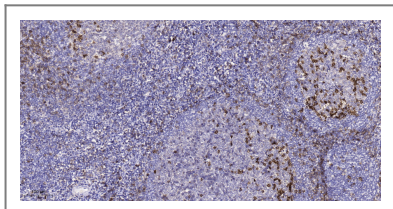
## | Validation Data



Western blot analysis of lysates from Jurkat cells, using LTK Antibody. The lane on the right is blocked with the synthesized peptide.



Western blot analysis of the lysates from HeLa cells using LTK antibody.



Immunohistochemical analysis of paraffin-embedded human tonsil. 1, Antibody was diluted at 1:200(4° overnight). 2, Tris-EDTA,pH9.0 was used for antigen retrieval. 3,Secondary antibody was diluted at 1:200(room temperature, 45min).

## Contact information

Orders: [order@immunoway.com](mailto:order@immunoway.com)  
 Support: [tech@immunoway.com](mailto:tech@immunoway.com)  
 Telephone: 877-594-3616 (Toll Free), 408-747-0185  
 Website: <http://www.immunoway.com>  
 Address: 2200 Ringwood Ave San Jose, CA 95131 USA



Please scan the QR code  
to access additional  
product information:  
**LTK Rabbit pAb**

For Research Use Only. Not for Use in Diagnostic Procedures.

[Antibody](#) | [ELISA Kits](#) | [Protein](#) | [Reagents](#)