

LRRC41 Rabbit pAb

CatalogNo: YT2593

Key Features

Host Species

- Rabbit

Reactivity

- Human, Mouse, Rat

Applications

- WB, IHC, IF, ELISA

MW

- 80kD (Observed)

Isotype

- IgG

Recommended Dilution Ratios

WB 1:500-1:2000

IHC 1:100-1:300

ELISA 1:5000

IF 1:50-200

Storage

Storage*

-15°C to -25°C/1 year (Do not lower than -25°C)

Formulation

Liquid in PBS containing 50% glycerol, 0.5% BSA and 0.02% sodium azide.

Basic Information

Clonality

Polyclonal

Immunogen Information

Immunogen

The antiserum was produced against synthesized peptide derived from human LRRC41. AA range: 391-440

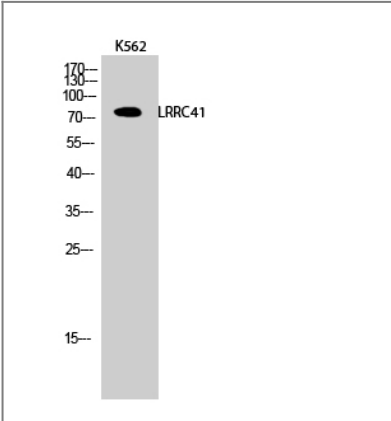
Specificity

LRRC41 Polyclonal Antibody detects endogenous levels of LRRC41 protein.

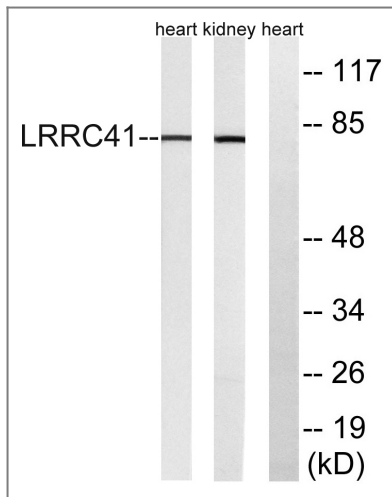
Target Information

Gene name	LRRC41		
Protein Name	Leucine-rich repeat-containing protein 41		
	Organism	Gene ID	UniProt ID
	Human	10489 ;	Q15345 ;
	Mouse	230654 ;	Q8K1C9 ;
	Rat	362566 ;	Q5M9H1 ;
Cellular Localization	nucleus,cytoplasm,membrane,		
Tissue specificity	Brain,Endometrium,Epithelium,Pancreas,Testis,Tonsil,		
Function	Caution:It is uncertain whether Met-1 or Met-23 is the initiator.,Domain:The elongin BC complex binding domain is also known as BC-box with the consensus [APST]-L-x(3)-C-x(3)-[AILV].,Function:Probable substrate recognition component of an ECS (Elongin BC-CUL2/5-SOCS-box protein) E3 ubiquitin ligase complex which mediates the ubiquitination and subsequent proteasomal degradation of target proteins.,pathway:Protein modification; protein ubiquitination.,PTM:Phosphorylated upon DNA damage, probably by ATM or ATR.,sequence Caution:Translation N-terminally extended.,similarity:Contains 7 LRR (leucine-rich) repeats.,subunit:Part of an E3 ubiquitin-protein ligase complex with Elongin BC (TCEB1 and TCEB2), RBX1 and CUL5. Component of a probable ECS(LRRC41) complex which contains CUL5, RNF7/RBX2, Elongin BC and LRRC41. Interacts with CUL5, RNF7, TCEB1 and TCEB2.,		

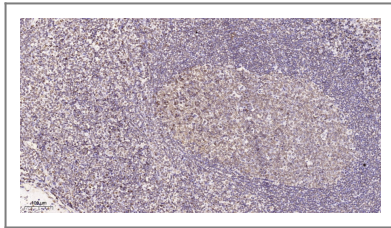
Validation Data



Western Blot analysis of K562 cells using LRRC41 Polyclonal Antibody



Western blot analysis of lysates from rat kidney and rat heart cells, using LRRC41 Antibody. The lane on the right is blocked with the synthesized peptide.



Immunohistochemical analysis of paraffin-embedded human tonsil. 1, Tris-EDTA, pH 9.0 was used for antigen retrieval. 2 Antibody was diluted at 1:200 (4° overnight). 3, Secondary antibody was diluted at 1:200 (room temperature, 45min).

Contact information

Orders: order@immunoway.com
 Support: tech@immunoway.com
 Telephone: 877-594-3616 (Toll Free), 408-747-0185
 Website: <http://www.immunoway.com>
 Address: 2200 Ringwood Ave San Jose, CA 95131 USA



Please scan the QR code to access additional product information:
LRRC41 Rabbit pAb

For Research Use Only. Not for Use in Diagnostic Procedures.

[Antibody](#) | [ELISA Kits](#) | [Protein](#) | [Reagents](#)