

## LPD lipase Rabbit pAb

CatalogNo: YT2586

### Key Features

#### Host Species

- Rabbit

#### Reactivity

- Human

#### Applications

- WB,IHC,IF,ELISA

#### MW

- 53kD (Observed)

#### Isotype

- IgG

### Recommended Dilution Ratios

**WB 1:500-1:2000**

**IHC 1:100-1:300**

**ELISA 1:10000**

**IF 1:50-200**

### Storage

#### Storage\*

-15°C to -25°C/1 year(Do not lower than -25°C)

#### Formulation

Liquid in PBS containing 50% glycerol, 0.5% BSA and 0.02% sodium azide.

### Basic Information

#### Clonality

Polyclonal

### Immunogen Information

#### Immunogen

The antiserum was produced against synthesized peptide derived from human LIPI. AA range:289-338

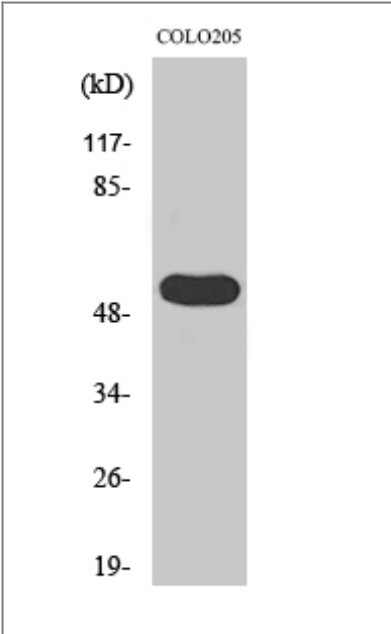
#### Specificity

LPD lipase Polyclonal Antibody detects endogenous levels of LPD lipase protein.

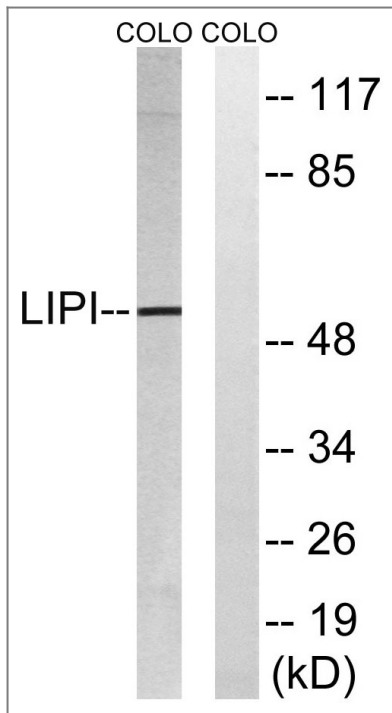
### Target Information

Gene name	LIPI		
Protein Name	Lipase member I		
	Organism	Gene ID	UniProt ID
	Human	<a href="#">149998</a> ;	<a href="#">Q6XZB0</a> ;
Cellular Localization	[Isoform 1]: Cell membrane . Secreted . May associate with lipid draft. .; [Isoform 2]: Cell membrane . Secreted . May associate with lipid draft. .		
Tissue specificity	Expressed in testis. Expressed exclusively at the connecting piece of the sperm.		
Function	Disease:Defects in LIPI may be a cause of susceptibility to familial hypertriglyceridemia [MIM:145750]. Familial hypertriglyceridemia is a common inherited disorder in which the concentration of very low density lipoprotein (VLDL) is elevated in the plasma. This leads to increased risk of heart disease, obesity, and pancreatitis.,enzyme regulation:Inhibited by sodium vanadate.,Function:Hydrolyzes specifically phosphatidic acid (PA) to produce lysophosphatidic acid (LPA).,PTM:Phosphorylated upon DNA damage, probably by ATM or ATR.,similarity:Belongs to the AB hydrolase superfamily. Lipase family.,subcellular location:May associate with lipid draft.,subunit:Interacts with heparin with a high affinity.,tissue specificity:Expressed in testis. Expressed exclusively at the connecting piece of the sperm.,		

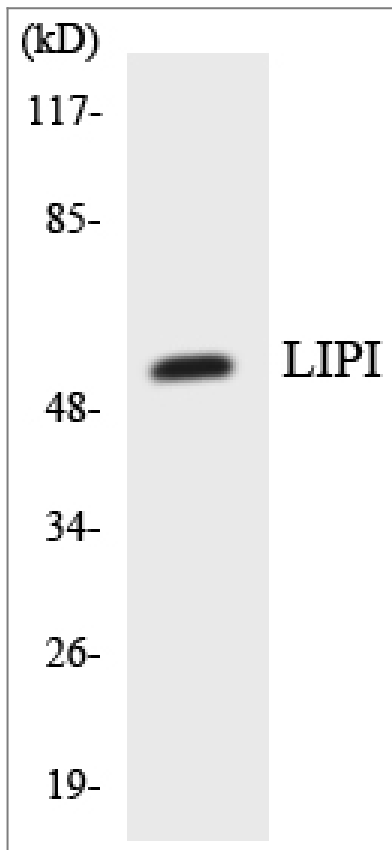
Validation Data



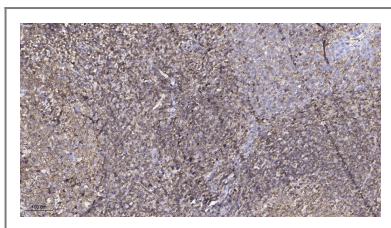
Western Blot analysis of various cells using LPD lipase Polyclonal Antibody



Western blot analysis of lysates from COLO cells, using LIPI Antibody. The lane on the right is blocked with the synthesized peptide.



Western blot analysis of the lysates from HepG2 cells using LIPI antibody.



Immunohistochemical analysis of paraffin-embedded human tonsil. 1, Antibody was diluted at 1:200(4° overnight). 2, Tris-EDTA,pH9.0 was used for antigen retrieval. 3,Secondary antibody was diluted at 1:200(room temperature, 45min).

## | Contact information

Orders: order@immunoway.com  
Support: tech@immunoway.com  
Telephone: 877-594-3616 (Toll Free), 408-747-0185  
Website: <http://www.immunoway.com>  
Address: 2200 Ringwood Ave San Jose, CA 95131 USA



Please scan the QR code  
to access additional  
product information:  
**LPD lipase Rabbit  
pAb**

---

For Research Use Only. Not for Use in Diagnostic Procedures.

[Antibody](#) | [ELISA Kits](#) | [Protein](#) | [Reagents](#)