

LPCAT2 Rabbit pAb

CatalogNo: YT2585

Key Features

Host Species

- Rabbit

Reactivity

- Human, Mouse, Rat

Applications

- WB, IHC

MW

- 50kD (Observed)

Isotype

- IgG

Storage

Storage* -15°C to -25°C/1 year (Do not lower than -25°C)

Formulation Liquid in PBS containing 50% glycerol, 0.5% BSA and 0.02% sodium azide.

Recommended Dilution Ratios

WB 1:500-2000

IHC 1:50-300

Basic Information

Clonality Polyclonal

Immunogen Information

Immunogen The antiserum was produced against synthesized peptide derived from human LPCAT2. AA range: 321-370

Specificity LPCAT2 Polyclonal Antibody detects endogenous levels of LPCAT2 protein.

Target Information

Gene name LPCAT2

Protein Name Lysophosphatidylcholine acyltransferase 2

Organism	Gene ID	UniProt ID
Human	54947 ;	Q7L5N7 ;
Mouse	270084 ;	Q8BYI6 ;
Rat		P0C1Q3 ;

Cellular Localization

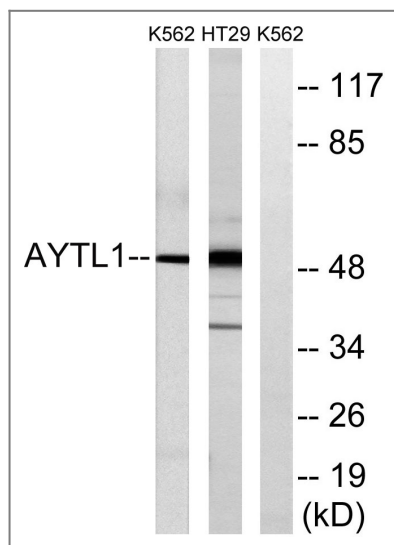
Endoplasmic reticulum membrane ; Single-pass type II membrane protein . Golgi apparatus membrane ; Single-pass type II membrane protein . Cell membrane ; Single-pass type II membrane protein . Lipid droplet .

Tissue specificity Carcinoma,Fetal kidney,Kidney,

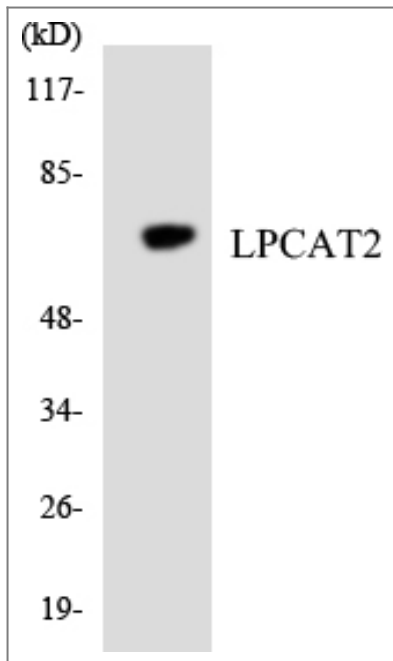
Function

Catalytic activity:Acetyl-CoA + 1-alkyl-sn-glycero-3-phosphocholine = CoA + 2-acetyl-1-alkyl-sn-glycero-3-phosphocholine.,Catalytic activity:Acyl-CoA + 1-acyl-sn-glycero-3-phosphocholine = CoA + 1,2-diacyl-sn-glycero-3-phosphocholine.,Domain:The HXXXXD motif is essential for acyltransferase activity.,enzyme regulation:Acetyltransferase activity is increased following acute inflammatory stimulation by lipopolysaccharide (LPS). Acyltransferase activity is unchanged.,Function:Possesses both acyltransferase and acetyltransferase activities. Activity is calcium-dependent. Involved in platelet-activating factor (PAF) biosynthesis by catalyzing the conversion of the PAF precursor, 1-O-alkyl-sn-glycero-3-phosphocholine (lyso-PAF) into 1-O-alkyl-2-acetyl-sn-glycero-3-phosphocholine (PAF). Also converts lyso-PAF to 1-alkyl-phosphatidylcholine (PC), a major component of cell membranes and a PAF precursor. Under resting conditions, acyltransferase activity is preferred. Upon acute inflammatory stimulus, acetyltransferase activity is enhanced and PAF synthesis increases.,pathway:Lipid metabolism; phospholipid metabolism.,similarity:Belongs to the 1-acyl-sn-glycerol-3-phosphate acyltransferase family.,similarity:Contains 2 EF-hand domains.,

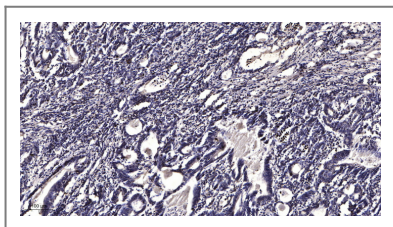
Validation Data



Western blot analysis of lysates from K562 and HT-29 cells, using LPCAT2 Antibody. The lane on the right is blocked with the synthesized peptide.



Western blot analysis of the lysates from HT-29 cells using LPCAT2 antibody.



Immunohistochemical analysis of paraffin-embedded human Gastric adenocarcinoma. 1, Antibody was diluted at 1:200(4° overnight). 2, Tris-EDTA,pH9.0 was used for antigen retrieval. 3,Secondary antibody was diluted at 1:200(room temperature, 45min).

Contact information

Orders: order@immunoway.com
Support: tech@immunoway.com
Telephone: 877-594-3616 (Toll Free), 408-747-0185
Website: <http://www.immunoway.com>
Address: 2200 Ringwood Ave San Jose, CA 95131 USA



Please scan the QR code to access additional product information:
LPCAT2 Rabbit pAb

For Research Use Only. Not for Use in Diagnostic Procedures.

[Antibody](#) | [ELISA Kits](#) | [Protein](#) | [Reagents](#)