

## LONP2 Rabbit pAb

CatalogNo: YT2579

### Key Features

#### Host Species

- Rabbit

#### Reactivity

- Human, Mouse, Rat

#### Applications

- WB, IHC, IF, ELISA

#### MW

- 95kD (Observed)

#### Isotype

- IgG

### Recommended Dilution Ratios

**WB 1:500-1:2000**

**IHC 1:100-1:300**

**ELISA 1:40000**

**IF 1:50-200**

### Storage

#### Storage\*

-15°C to -25°C/1 year (Do not lower than -25°C)

#### Formulation

Liquid in PBS containing 50% glycerol, 0.5% BSA and 0.02% sodium azide.

### Basic Information

#### Clonality

Polyclonal

### Immunogen Information

#### Immunogen

The antiserum was produced against synthesized peptide derived from human LONP2. AA range: 780-829

#### Specificity

LONP2 Polyclonal Antibody detects endogenous levels of LONP2 protein.

### Target Information

**Gene name** LONP2

**Protein Name** Lon protease homolog 2 peroxisomal

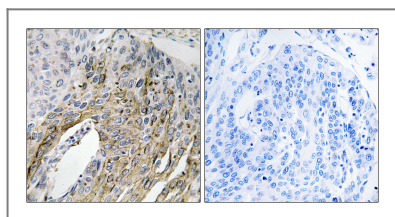
| Organism | Gene ID                 | UniProt ID               |
|----------|-------------------------|--------------------------|
| Human    | <a href="#">83752</a> ; | <a href="#">Q86WA8</a> ; |
| Mouse    | <a href="#">66887</a> ; | <a href="#">Q9DBN5</a> ; |
| Rat      |                         | <a href="#">Q3MIB4</a> ; |

**Cellular Localization** Peroxisome matrix .

**Tissue specificity** Widely expressed, with high levels in the liver, kidney and pancreas.

**Function** Function:Probable serine protease which may be involved in peroxisome biogenesis.,similarity:Belongs to the peptidase S16 family.,

## Validation Data



Immunohistochemistry analysis of paraffin-embedded human lung carcinoma tissue, using LONP2 Antibody. The picture on the right is blocked with the synthesized peptide.

## Contact information

Orders: [order@immunoway.com](mailto:order@immunoway.com)  
Support: [tech@immunoway.com](mailto:tech@immunoway.com)  
Telephone: 877-594-3616 (Toll Free), 408-747-0185  
Website: <http://www.immunoway.com>  
Address: 2200 Ringwood Ave San Jose, CA 95131 USA



Please scan the QR code to access additional product information:  
**LONP2 Rabbit pAb**

For Research Use Only. Not for Use in Diagnostic Procedures.

[Antibody](#) | [ELISA Kits](#) | [Protein](#) | [Reagents](#)