

LOK Rabbit pAb

CatalogNo: YT2578

Key Features

Host Species

- Rabbit

Reactivity

- Human,Rat,Mouse,

Applications

- WB,ELISA,IHC

MW

- 120kD (Observed)

Isotype

- IgG

Recommended Dilution Ratios

WB 1:500-2000

IHC 1:50-300

ELISA 1:2000-20000

Storage

Storage* -15°C to -25°C/1 year(Do not lower than -25°C)

Formulation Liquid in PBS containing 50% glycerol, 0.5% BSA and 0.02% sodium azide.

Basic Information

Clonality Polyclonal

Immunogen Information

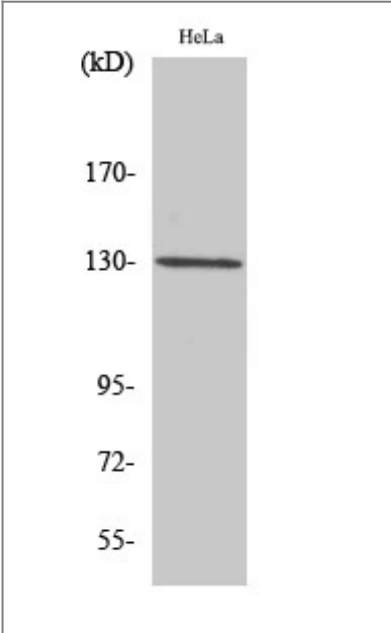
Immunogen The antiserum was produced against synthesized peptide derived from human STK10. AA range:491-540

Specificity LOK Polyclonal Antibody detects endogenous levels of LOK protein.

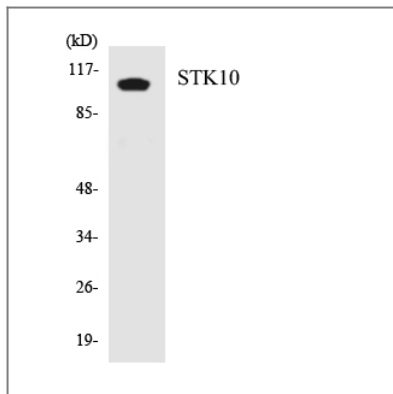
Target Information

| | | | |
|-----------------------|--|------------------------|--------------------------|
| Gene name | STK10 | | |
| Protein Name | Serine/threonine-protein kinase 10 | | |
| | Organism | Gene ID | UniProt ID |
| | Human | 6793 ; | O94804 ; |
| | Mouse | | O55098 ; |
| Cellular Localization | Cell membrane ; Peripheral membrane protein . | | |
| Tissue specificity | Highly expressed in rapidly proliferating tissues (spleen, placenta, and peripheral blood leukocytes). Also expressed in brain, heart, skeletal muscle, colon, thymus, kidney, liver, small intestine and lung. | | |
| Function | Catalytic activity:ATP + a protein = ADP + a phosphoprotein.,Function:Can act on substrates such as myelin basic protein and histone 2A on serine and threonine residues.,PTM:Autophosphorylated.,similarity:Belongs to the protein kinase superfamily.,similarity:Belongs to the protein kinase superfamily. STE Ser/Thr protein kinase family. STE20 subfamily.,similarity:Contains 1 protein kinase domain.,tissue specificity:Expressed predominantly in lymphoid organs., | | |

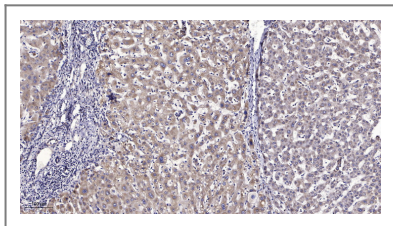
| Validation Data



Western Blot analysis of HuvEc cells using LOK Polyclonal Antibody



Western blot analysis of the lysates from HT-29 cells using STK10 antibody.



Immunohistochemical analysis of paraffin-embedded human liver cancer. 1, Antibody was diluted at 1:200(4° overnight). 2, Tris-EDTA,pH9.0 was used for antigen retrieval. 3,Secondary antibody was diluted at 1:200(room temperature, 45min).

Contact information

Orders: order@immunoway.com
 Support: tech@immunoway.com
 Telephone: 877-594-3616 (Toll Free), 408-747-0185
 Website: <http://www.immunoway.com>
 Address: 2200 Ringwood Ave San Jose, CA 95131 USA



Please scan the QR code
to access additional
product information:
LOK Rabbit pAb

For Research Use Only. Not for Use in Diagnostic Procedures.

[Antibody](#) | [ELISA Kits](#) | [Protein](#) | [Reagents](#)