

LIRA1 Rabbit pAb

CatalogNo: YT2569

Key Features

Host Species

- Rabbit

Reactivity

- Human

Applications

- WB,IHC,IF

MW

- 53kD (Observed)

Isotype

- IgG

Recommended Dilution Ratios

WB 1:500-2000

IHC 1:50-300

IF 1:200-1:1000

Storage

Storage*

-15°C to -25°C/1 year(Do not lower than -25°C)

Formulation

Liquid in PBS containing 50% glycerol, 0.5% BSA and 0.02% sodium azide.

Basic Information

Clonality

Polyclonal

Immunogen Information

Immunogen

The antiserum was produced against synthesized peptide derived from human LILRA1. AA range:53-102

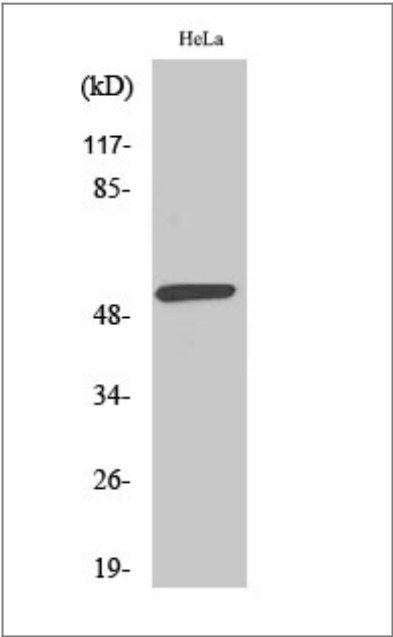
Specificity

LIR-6 Polyclonal Antibody detects endogenous levels of LIR-6 protein.

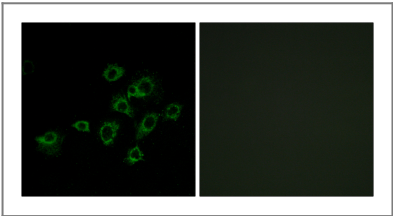
Target Information

Gene name	LILRA1 LIR6		
Protein Name	Leukocyte immunoglobulin-like receptor subfamily A member 1		
	Organism	Gene ID	UniProt ID
	Human	11024 ;	O75019 ;
Cellular Localization	Membrane; Single-pass type I membrane protein.		
Tissue specificity	Detected in monocytes and B-cells.		
Function	Function:May act as receptor for class I MHC antigens.,similarity:Contains 4 Ig-like C2-type (immunoglobulin-like) domains.,tissue specificity:Detected in monocytes and B-cells.,		

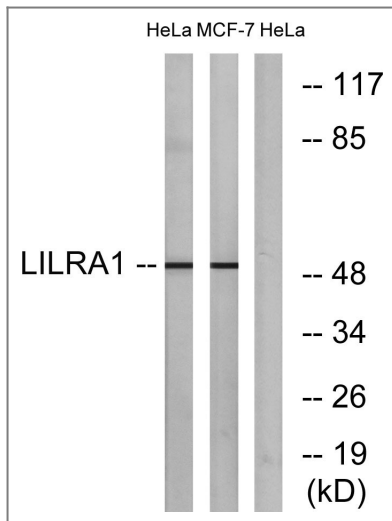
| Validation Data



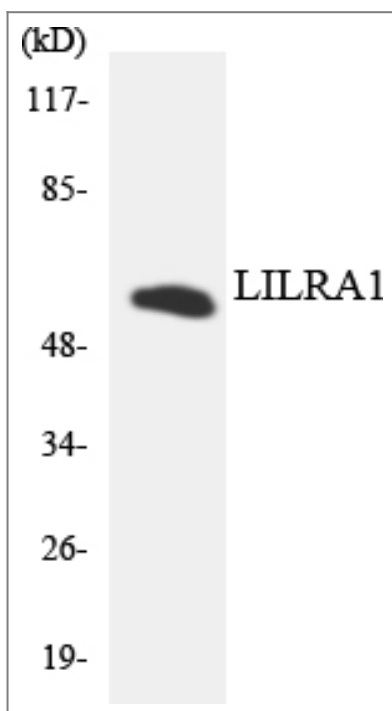
Western Blot analysis of MCF7 cells using LIR-6 Polyclonal Antibody



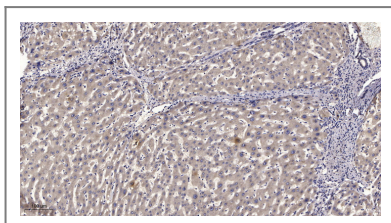
Immunofluorescence analysis of A549 cells, using LILRA1 Antibody. The picture on the right is blocked with the synthesized peptide.



Western blot analysis of lysates from HeLa and MCF-7 cells, using LILRA1 Antibody. The lane on the right is blocked with the synthesized peptide.



Western blot analysis of the lysates from HeLa cells using LILRA1 antibody.



Immunohistochemical analysis of paraffin-embedded human liver cancer. 1, Antibody was diluted at 1:200(4° overnight). 2, Tris-EDTA,pH9.0 was used for antigen retrieval. 3,Secondary antibody was diluted at 1:200(room temperature, 45min).

Contact information

Orders: order@immunoway.com
 Support: tech@immunoway.com
 Telephone: 877-594-3616 (Toll Free), 408-747-0185
 Website: <http://www.immunoway.com>
 Address: 2200 Ringwood Ave San Jose, CA 95131 USA



Please scan the QR code to access additional product information:
LILRA1 Rabbit pAb

