

LHR Rabbit pAb

CatalogNo: YT2558

Key Features

Host Species

- Rabbit

Reactivity

- Human, Mouse, Rat

Applications

- WB, IF, ELISA, IHC

MW

- 80kD (Observed)

Isotype

- IgG

Storage

Storage* -15°C to -25°C/1 year (Do not lower than -25°C)

Formulation Liquid in PBS containing 50% glycerol, 0.5% BSA and 0.02% sodium azide.

Recommended Dilution Ratios

WB 1:500-2000

IHC 1:50-300

IF 1:200-1:1000

ELISA 1:2000-20000

Basic Information

Clonality Polyclonal

Immunogen Information

Immunogen The antiserum was produced against synthesized peptide derived from human LSHR. AA range: 621-670

Specificity LHR Polyclonal Antibody detects endogenous levels of LHR protein.

Target Information

Gene name LHCGR LCGR LGR2 LHRHR

Protein Name Lutropin-choriogonadotropic hormone receptor

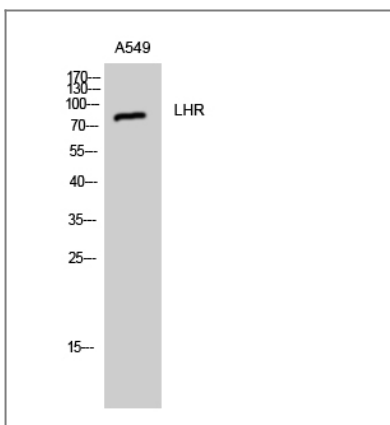
Organism	Gene ID	UniProt ID
Human	3973 ;	P22888 ;
Mouse	16867 ;	P30730 ;
Rat	25477 ;	P16235 ;

Cellular Localization Cell membrane ; Multi-pass membrane protein .

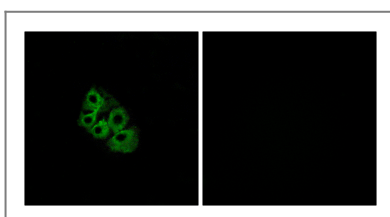
Tissue specificity Gonadal and thyroid cells.

Function Alternative products:Additional isoforms seem to exist,Disease:Defects in LHCGR are a cause of familial male precocious puberty (FMPP) [MIM:176410]; also known as testotoxicosis. In FMPP the receptor is constitutively activated.,Disease:Defects in LHCGR are a cause of Leydig cell hypoplasia (LCH) [MIM:152790]. LCH is an autosomal recessive disease characterized by male pseudohermaphroditism. In LCH the testes are small with marked immaturity of the Leydig cells which correlates with undetectable plasma testosterone levels and elevated gonadotropins.,Function:Receptor for lutropin-choriogonadotropic hormone. The activity of this receptor is mediated by G proteins which activate adenylate cyclase.,online information:Glycoprotein-hormone Receptors Information System,similarity:Belongs to the G-protein coupled receptor 1 family.,similarity:Belongs to the G-protein coupled receptor 1 family. FSH/LSH/TSH subfamily.,similarity:Contains 7 LRR (leucine-rich) repeats.,tissue specificity:Gonadal and thyroid cells.,

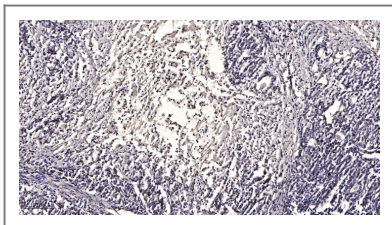
Validation Data



Western Blot analysis of A549 cells using LHR Polyclonal Antibody



Immunofluorescence analysis of A549 cells, using LSHR Antibody. The picture on the right is blocked with the synthesized peptide.



Immunohistochemical analysis of paraffin-embedded human Gastric adenocarcinoma. 1, Antibody was diluted at 1:200(4° overnight). 2, Tris-EDTA,pH9.0 was used for antigen retrieval. 3,Secondary antibody was diluted at 1:200(room temperature, 45min).

| Contact information

Orders: order@immunoway.com
Support: tech@immunoway.com
Telephone: 877-594-3616 (Toll Free), 408-747-0185
Website: <http://www.immunoway.com>
Address: 2200 Ringwood Ave San Jose, CA 95131 USA



Please scan the QR code to access additional product information:
LHR Rabbit pAb

For Research Use Only. Not for Use in Diagnostic Procedures.

[Antibody](#) | [ELISA Kits](#) | [Protein](#) | [Reagents](#)