

## LGR6 Rabbit pAb

CatalogNo: YT2557

### Key Features

#### Host Species

- Rabbit

#### Reactivity

- Human, Mouse

#### Applications

- WB, IHC, IF

#### MW

- 104kD (Observed)

#### Isotype

- IgG

### Recommended Dilution Ratios

**WB 1:500-2000**

**IHC 1:50-300**

**IF 1:200-1:1000**

### Storage

#### Storage\*

-15°C to -25°C/1 year (Do not lower than -25°C)

#### Formulation

Liquid in PBS containing 50% glycerol, 0.5% BSA and 0.02% sodium azide.

### Basic Information

#### Clonality

Polyclonal

### Immunogen Information

#### Immunogen

The antiserum was produced against synthesized peptide derived from human LGR6. AA range: 471-520

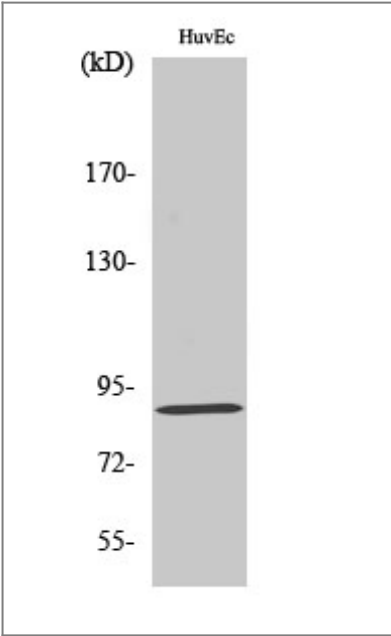
#### Specificity

LGR6 Polyclonal Antibody detects endogenous levels of LGR6 protein.

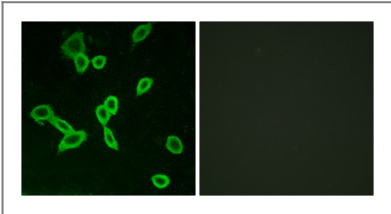
### Target Information

|                       |  |                         |                          |
|-----------------------|--|-------------------------|--------------------------|
| Gene name             | LGR6   |                         |                          |
| Protein Name          | Leucine-rich repeat-containing G-protein coupled receptor 6  |                         |                          |
|                       | Organism   | Gene ID                 | UniProt ID               |
|                       | Human  | <a href="#">59352</a> ; | <a href="#">Q9HBX8</a> ; |
|                       | Mouse  |                         | <a href="#">Q3UVD5</a> ; |
| Cellular Localization | Cell membrane ; Multi-pass membrane protein .  |                         |                          |
| Tissue specificity    | Mammary gland,   |                         |                          |
| Function              | Function:Orphan receptor.,PTM:Phosphorylated upon DNA damage, probably by ATM or ATR.,similarity:Belongs to the G-protein coupled receptor 1 family.,similarity:Contains 16 LRR (leucine-rich) repeats., |                         |                          |

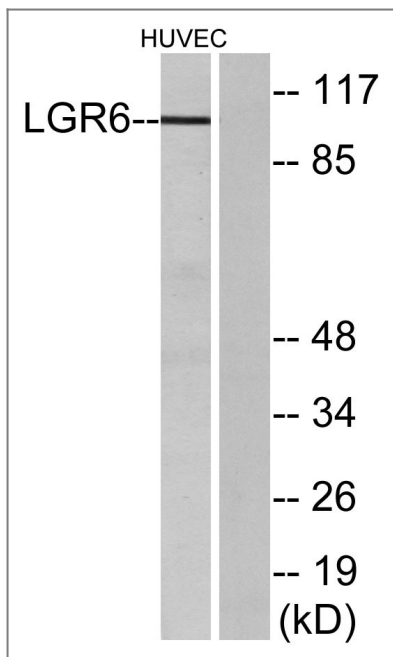
| Validation Data



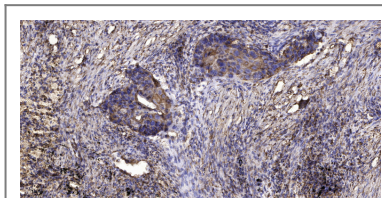
Western Blot analysis of various cells using LGR6 Polyclonal Antibody diluted at 1:500



Immunofluorescence analysis of LOVO cells, using LGR6 Antibody. The picture on the right is blocked with the synthesized peptide.



Western blot analysis of lysates from HUVEC cells, using LGR6 Antibody. The lane on the right is blocked with the synthesized peptide.



Immunohistochemical analysis of paraffin-embedded human Squamous cell carcinoma of lung. 1, Antibody was diluted at 1:200(4° overnight). 2, Tris-EDTA,pH9.0 was used for antigen retrieval. 3,Secondary antibody was diluted at 1:200(room temperature, 45min).

## Contact information

Orders: [order@immunoway.com](mailto:order@immunoway.com)  
 Support: [tech@immunoway.com](mailto:tech@immunoway.com)  
 Telephone: 877-594-3616 (Toll Free), 408-747-0185  
 Website: <http://www.immunoway.com>  
 Address: 2200 Ringwood Ave San Jose, CA 95131 USA



Please scan the QR code to access additional product information:  
**LGR6 Rabbit pAb**

For Research Use Only. Not for Use in Diagnostic Procedures.

[Antibody](#) | [ELISA Kits](#) | [Protein](#) | [Reagents](#)