

Lfc Rabbit pAb

CatalogNo: YT2556

| Key Features

Host Species

- Rabbit

Reactivity

- Human, Mouse, Rat

Applications

- WB, ELISA, IHC

MW

- 111kD (Observed)

Isotype

- IgG

| Recommended Dilution Ratios

WB 1:500-2000

IHC 1:50-300

ELISA 1:2000-20000

| Storage

Storage*

-15°C to -25°C/1 year (Do not lower than -25°C)

Formulation

Liquid in PBS containing 50% glycerol, 0.5% BSA and 0.02% sodium azide.

| Basic Information

Clonality

Polyclonal

| Immunogen Information

Immunogen

The antiserum was produced against synthesized peptide derived from C-terminal human ARHGEF2. AA range: 851-900

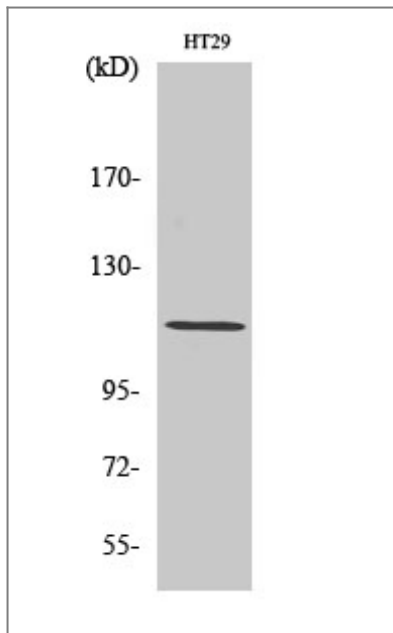
Specificity

Lfc Polyclonal Antibody detects endogenous levels of Lfc protein.

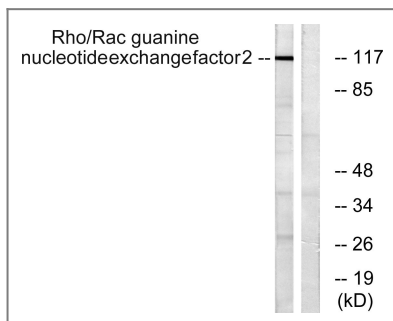
| Target Information

| | | | |
|-----------------------|---|--------------------------|--------------------------|
| Gene name | ARHGEF2 | | |
| Protein Name | Rho guanine nucleotide exchange factor 2 | | |
| | Organism | Gene ID | UniProt ID |
| | Human | 9181 ; | Q92974 ; |
| | Mouse | 16800 ; | Q60875 ; |
| | Rat | 310635 ; | Q5FVC2 ; |
| Cellular Localization | Cytoplasm, cytoskeleton . Cytoplasm . Cell junction, tight junction . Golgi apparatus . Cytoplasm, cytoskeleton, spindle . Cell projection, ruffle membrane . Cytoplasmic vesicle . Localizes to the tips of cortical microtubules of the mitotic spindle during cell division, and is further released upon microtubule depolymerization (PubMed:15827085). Recruited into membrane ruffles induced by S.flexneri at tight junctions of polarized epithelial cells (PubMed:19043560). Colocalized with NOD2 and RIPK2 in vesicles and with the cytoskeleton (PubMed:21887730). . | | |
| Tissue specificity | Brain,Cervix carcinoma,Epithelium,Platelet, | | |
| Function | Domain:The DH (DBL-homology) domain interacts with and promotes loading of GTP on RhoA.,Domain:The PH (pleckstrin-homology) domain is involved in microtubule binding and targeting to tight junctions.,Function:Activates Rho-GTPases by promoting the exchange of GDP for GTP. May be involved in epithelial barrier permeability, cell motility and polarization, dendritic spine morphology, antigen presentation, leukemic cell differentiation, cell cycle regulation, and cancer. Binds Rac-GTPases, but does not seem to promote nucleotide exchange activity toward Rac-GTPases, which was uniquely reported in PubMed:9857026. May stimulate instead the cortical activity of Rac. Inactive toward CDC42, TC10, or Ras-GTPases.,online information:ARHGEF2 entry,PTM:Phosphorylation of Ser-886 by PAK1 induces binding to protein 14-3-3 zeta, promoting its relocation to microtubules and the inhibition of its activity. Phosphorylated by STK6 and CDK1 during mitosis, which negatively regulates its activity. Phosphorylation by MAPK1 or MAPK3 increases nucleotide exchange activity. Phosphorylation by PAK4 releases GEF-H1 from the microtubules.,sequence Caution:Sequence differs at a large extent from the sequence shown in the paper.,similarity:Contains 1 DH (DBL-homology) domain.,similarity:Contains 1 PH domain.,similarity:Contains 1 phorbol-ester/DAG-type zinc finger.,subcellular location:Localizes to the tips of cortical microtubules of the mitotic spindle during cell division, and is further released upon microtubule depolymerization.,subunit:Interacts with 14-3-3 zeta; when phosphorylated at Ser-886. Interacts with the kinases PAK4, AURKA/STK6 and MAPK1. Interacts with RHOA and RAC1., | | |

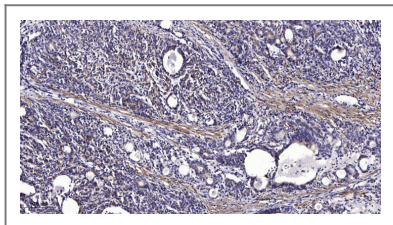
| Validation Data



Western Blot analysis of HT29 cells using Lfc Polyclonal Antibody diluted at 1:1000



Western blot analysis of lysates from NIH/3T3 cells, using Rho/Rac Guanine Nucleotide Exchange Factor 2 Antibody. The lane on the right is blocked with the synthesized peptide.



Immunohistochemical analysis of paraffin-embedded human Gastric adenocarcinoma. 1, Antibody was diluted at 1:200(4° overnight). 2, Tris-EDTA, pH 9.0 was used for antigen retrieval. 3, Secondary antibody was diluted at 1:200(room temperature, 45min).

Contact information

Orders: order@immunoway.com
 Support: tech@immunoway.com
 Telephone: 877-594-3616 (Toll Free), 408-747-0185
 Website: <http://www.immunoway.com>
 Address: 2200 Ringwood Ave San Jose, CA 95131 USA



Please scan the QR code to access additional product information:
Lfc Rabbit pAb