

## LDLRAD3 Rabbit pAb

CatalogNo: YT2551

### Key Features

#### Host Species

- Rabbit

#### Reactivity

- Human, Mouse

#### Applications

- WB, IHC, IF

#### MW

- 37kD (Observed)

#### Isotype

- IgG

### Storage

**Storage\*** -15°C to -25°C/1 year (Do not lower than -25°C)

**Formulation** Liquid in PBS containing 50% glycerol, 0.5% BSA and 0.02% sodium azide.

### Recommended Dilution Ratios

**WB 1:500-2000**

**IHC 1:50-300**

**IF 1:200-1:1000**

### Basic Information

**Clonality** Polyclonal

### Immunogen Information

**Immunogen** The antiserum was produced against synthesized peptide derived from human LDLRAD3. AA range: 37-86

**Specificity** LDLRAD3 Polyclonal Antibody detects endogenous levels of LDLRAD3 protein.

### Target Information

**Gene name** LDLRAD3

**Protein Name** Low-density lipoprotein receptor class A domain-containing protein 3

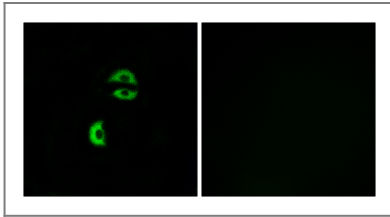
Organism	Gene ID	UniProt ID
Human	<a href="#">143458</a> ;	<a href="#">Q86YD5</a> ;
Mouse	<a href="#">241576</a> ;	<a href="#">A2AR95</a> ;

**Cellular Localization** Cell membrane ; Single-pass type I membrane protein .

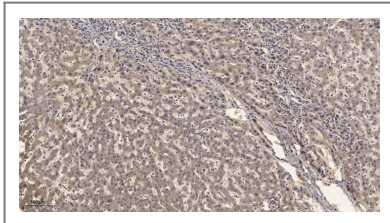
**Tissue specificity** Expressed at high levels in brain, lung, skeletal muscle, and pancreas. Expressed at moderate levels in heart, placenta, and kidney but not detected in the liver.

**Function** similarity:Belongs to the LDLR family.,similarity:Contains 3 LDL-receptor class A domains.,

## Validation Data



Immunofluorescence analysis of A549 cells, using LDLRAD3 Antibody. The picture on the right is blocked with the synthesized peptide.



Immunohistochemical analysis of paraffin-embedded human liver cancer. 1, Antibody was diluted at 1:200(4° overnight). 2, Tris-EDTA,pH9.0 was used for antigen retrieval. 3,Secondary antibody was diluted at 1:200(room temperature, 45min).

## Contact information

Orders: [order@immunoway.com](mailto:order@immunoway.com)  
Support: [tech@immunoway.com](mailto:tech@immunoway.com)  
Telephone: 877-594-3616 (Toll Free), 408-747-0185  
Website: <http://www.immunoway.com>  
Address: 2200 Ringwood Ave San Jose, CA 95131 USA



Please scan the QR code to access additional product information:  
**LDLRAD3 Rabbit pAb**