

LASS4 Rabbit pAb

CatalogNo: YT2536

Key Features

Host Species

- Rabbit

Reactivity

- Human, Mouse

Applications

- WB, IHC, IF, ELISA

MW

- 46kD (Observed)

Isotype

- IgG

Recommended Dilution Ratios

WB 1:500-1:2000

IHC 1:100-1:300

ELISA 1:10000

IF 1:50-200

Storage

Storage*

-15°C to -25°C/1 year (Do not lower than -25°C)

Formulation

Liquid in PBS containing 50% glycerol, 0.5% BSA and 0.02% sodium azide.

Basic Information

Clonality

Polyclonal

Immunogen Information

Immunogen

The antiserum was produced against synthesized peptide derived from human LASS4. AA range: 41-90

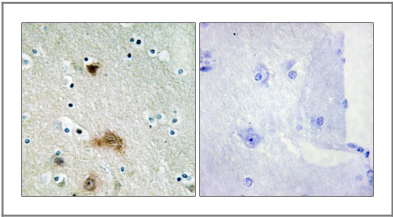
Specificity

LASS4 Polyclonal Antibody detects endogenous levels of LASS4 protein.

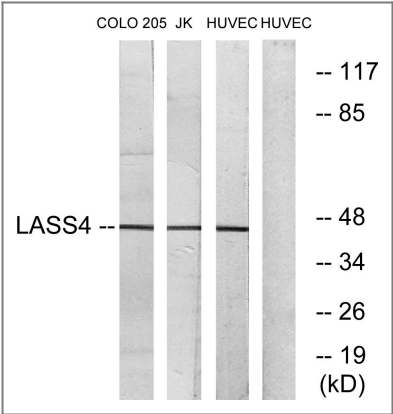
Target Information

Gene name	CERS4		
Protein Name	Ceramide synthase 4		
	Organism	Gene ID	UniProt ID
	Human	79603 ;	Q9HA82 ;
	Mouse		Q9D6J1 ;
Cellular Localization	Endoplasmic reticulum membrane ; Multi-pass membrane protein .		
Tissue specificity	Cerebellum,Embryo,Lung,		
Function	Function:May be either a bona fide (dihydro)ceramide synthase or a modulator of its activity. When overexpressed in cells is involved in the production of sphingolipids containing different fatty acid donors (N-linked stearyl- (C18) or arachidoyl- (C20) ceramides) in a fumonisin B1-independent manner.,similarity:Contains 1 homeobox DNA-binding domain.,similarity:Contains 1 TLC (TRAM/LAG1/CLN8) domain.,		

| Validation Data



Immunohistochemistry analysis of paraffin-embedded human brain tissue, using LASS4 Antibody. The picture on the right is blocked with the synthesized peptide.



Western blot analysis of lysates from HUVEC, COLO, and Jurkat cells, using LASS4 Antibody. The lane on the right is blocked with the synthesized peptide.

| Contact information

Orders: order@immunoway.com
Support: tech@immunoway.com
Telephone: 877-594-3616 (Toll Free), 408-747-0185
Website: http://www.immunoway.com
Address: 2200 Ringwood Ave San Jose, CA 95131 USA



Please scan the QR code
to access additional
product information:
LASS4 Rabbit pAb

For Research Use Only. Not for Use in Diagnostic Procedures.

[Antibody](#) | [ELISA Kits](#) | [Protein](#) | [Reagents](#)