

## LAP1B Rabbit pAb

CatalogNo: YT2534

### Key Features

#### Host Species

- Rabbit

#### Reactivity

- Human, Mouse, Rat

#### Applications

- WB, ELISA, IHC

#### MW

- 66kD (Observed)

#### Isotype

- IgG

### Storage

**Storage\*** -15°C to -25°C/1 year (Do not lower than -25°C)

**Formulation** Liquid in PBS containing 50% glycerol, 0.5% BSA and 0.02% sodium azide.

### Recommended Dilution Ratios

**WB 1:500-2000**

**IHC 1:50-300**

**ELISA 1:2000-20000**

### Basic Information

**Clonality** Polyclonal

### Immunogen Information

**Immunogen** The antiserum was produced against synthesized peptide derived from human TOR1AIP1. AA range:431-480

**Specificity** LAP1B Polyclonal Antibody detects endogenous levels of LAP1B protein.

### Target Information

**Gene name** TOR1AIP1

**Protein Name** Torsin-1A-interacting protein 1

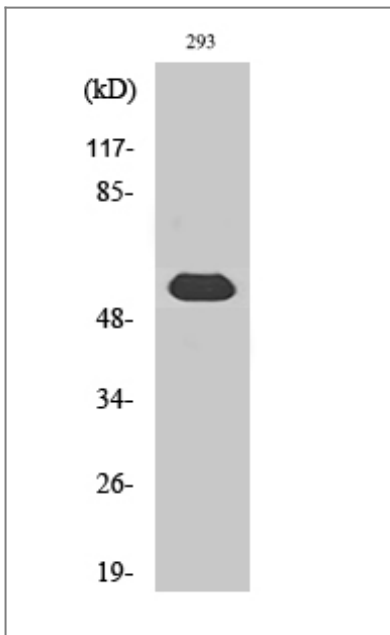
Organism	Gene ID	UniProt ID
Human	<a href="#">26092;</a>	<a href="#">Q5JTV8;</a>
Mouse		<a href="#">Q921T2;</a>

**Cellular Localization** Nucleus inner membrane ; Single-pass membrane protein .

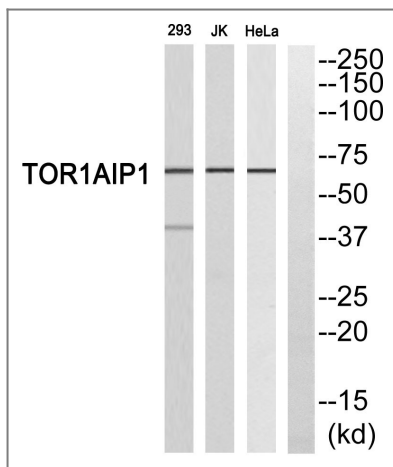
**Tissue specificity** Expressed in muscle, liver and kidney.

**Function** Function: Binds to A- and B-type lamins. Possible role in membrane attachment and assembly of the nuclear lamina.,PTM: Phosphorylated upon DNA damage, probably by ATM or ATR.,similarity: Belongs to the TOR1AIP family.,subunit: Interacts with TOR1A.,

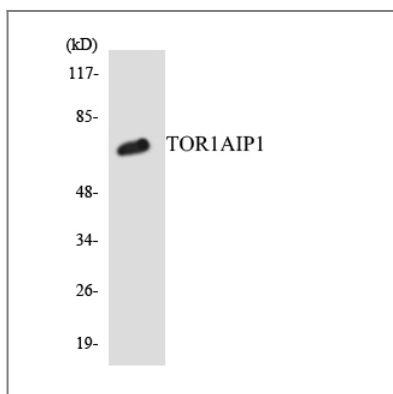
## Validation Data



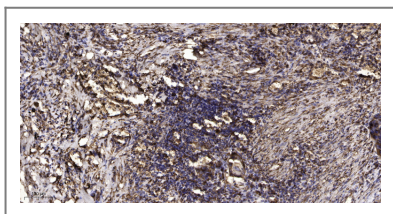
Western Blot analysis of various cells using LAP1B Polyclonal Antibody cells nucleus extracted by Minute TM Cytoplasmic and Nuclear Fractionation kit (SC-003, Invent biotech, MN, USA).



Western blot analysis of TOR1AIP1 Antibody. The lane on the right is blocked with the TOR1AIP1 peptide.



Western blot analysis of the lysates from COLO205 cells using TOR1AIP1 antibody.



Immunohistochemical analysis of paraffin-embedded human Squamous cell carcinoma of lung. 1, Antibody was diluted at 1:200(4° overnight). 2, Tris-EDTA,pH9.0 was used for antigen retrieval. 3,Secondary antibody was diluted at 1:200(room temperature, 45min).

## Contact information

Orders: [order@immunoway.com](mailto:order@immunoway.com)  
 Support: [tech@immunoway.com](mailto:tech@immunoway.com)  
 Telephone: 877-594-3616 (Toll Free), 408-747-0185  
 Website: <http://www.immunoway.com>  
 Address: 2200 Ringwood Ave San Jose, CA 95131 USA



Please scan the QR code to access additional product information:  
**LAP1B Rabbit pAb**

For Research Use Only. Not for Use in Diagnostic Procedures.

[Antibody](#) | [ELISA Kits](#) | [Protein](#) | [Reagents](#)