

Laminin γ -3 Rabbit pAb

CatalogNo: YT2532

| Key Features

Host Species

- Rabbit

Reactivity

- Human, Mouse

Applications

- WB, IHC, IF, ELISA

MW

- 170kD (Observed)

Isotype

- IgG

| Recommended Dilution Ratios

WB 1:500-1:2000

IHC 1:100-1:300

IF 1:200-1:1000

ELISA 1:40000

Not yet tested in other applications.

| Storage

Storage*

-15°C to -25°C/1 year (Do not lower than -25°C)

Formulation

Liquid in PBS containing 50% glycerol, 0.5% BSA and 0.02% sodium azide.

| Basic Information

Clonality

Polyclonal

| Immunogen Information

Immunogen

The antiserum was produced against synthesized peptide derived from human LAMC3. AA range: 1361-1410

Specificity

Laminin γ -3 Polyclonal Antibody detects endogenous levels of Laminin γ -3 protein.

Target Information

Gene name LAMC3

Protein Name Laminin subunit gamma-3

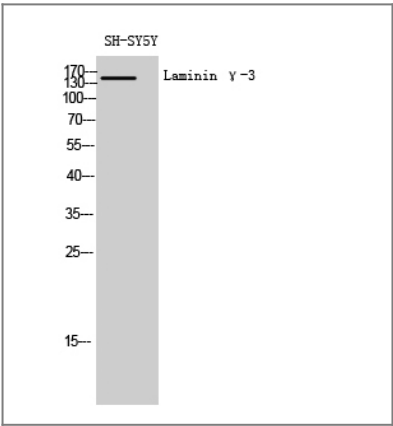
Organism	Gene ID	UniProt ID
Human	10319 ;	Q9Y6N6 ;
Mouse	23928 ;	Q9R0B6 ;

Cellular Localization Secreted, extracellular space, extracellular matrix, basement membrane.

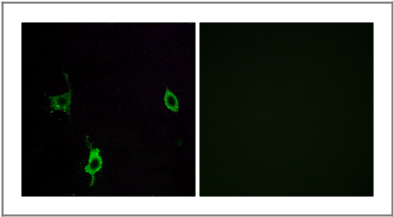
Tissue specificity Broadly expressed in: skin, heart, lung, and the reproductive tracts.

Function Domain:Domain IV is globular.,Domain:The alpha-helical domains I and II are thought to interact with other laminin chains to form a coiled coil structure.,Function:Binding to cells via a high affinity receptor, laminin is thought to mediate the attachment, migration and organization of cells into tissues during embryonic development by interacting with other extracellular matrix components.,similarity:Contains 1 laminin IV type A domain.,similarity:Contains 1 laminin N-terminal domain.,similarity:Contains 11 laminin EGF-like domains.,subunit:Laminin is a complex glycoprotein, consisting of three different polypeptide chains (alpha, beta, gamma), which are bound to each other by disulfide bonds into a cross-shaped molecule comprising one long and three short arms with globules at each end. Gamma-3 is a subunit of laminin-12.,tissue specificity:Broadly expressed in: skin, heart, lung, and the reproductive tracts.,

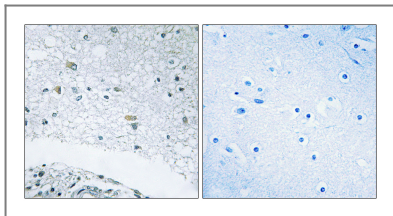
Validation Data



Western Blot analysis of SH-SY5Y cells using Laminin γ-3 Polyclonal Antibody diluted at 1:1000



Immunofluorescence analysis of LOVO cells, using LAMC3 Antibody. The picture on the right is blocked with the synthesized peptide.



Immunohistochemistry analysis of paraffin-embedded human brain tissue, using LAMC3 Antibody. The picture on the right is blocked with the synthesized peptide.

| Contact information

Orders: order@immunoway.com
Support: tech@immunoway.com
Telephone: 877-594-3616 (Toll Free), 408-747-0185
Website: <http://www.immunoway.com>
Address: 2200 Ringwood Ave San Jose, CA 95131 USA



Please scan the QR code to access additional product information:
Laminin γ -3 Rabbit pAb

For Research Use Only. Not for Use in Diagnostic Procedures.

[Antibody](#) | [ELISA Kits](#) | [Protein](#) | [Reagents](#)