

Laminin γ -1 Rabbit pAb

CatalogNo: YT2531

Orthogonal Validated 

Key Features

Host Species

- Rabbit

Reactivity

- Human, Mouse, Rat, Monkey, Cat

Applications

- WB, IHC, IF, ELISA

MW

- 178kD (Observed)

Isotype

- IgG

Recommended Dilution Ratios

WB 1:500-1:2000**IHC 1:100-1:300****IF 1:200-1:1000****ELISA 1:40000****Not yet tested in other applications.**

Storage

Storage*

-15°C to -25°C/1 year (Do not lower than -25°C)

Formulation

Liquid in PBS containing 50% glycerol, 0.5% BSA and 0.02% sodium azide.

Basic Information

Clonality

Polyclonal

Immunogen Information

Immunogen

The antiserum was produced against synthesized peptide derived from human LAMC1. AA range: 1451-1500

SpecificityLaminin γ -1 Polyclonal Antibody detects endogenous levels of Laminin γ -1 protein.

Target Information

Gene name LAMC1

Protein Name Laminin subunit gamma-1

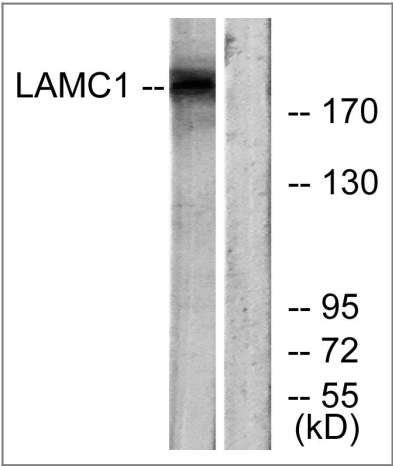
Organism	Gene ID	UniProt ID
Human	3915 ;	P11047 ;
Mouse		P02468 ;

Cellular Localization Secreted, extracellular space, extracellular matrix, basement membrane.

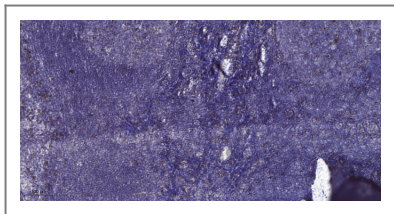
Tissue specificity Found in the basement membranes (major component).

Function Domain:Domains VI and IV are globular.,Domain:The alpha-helical domains I and II are thought to interact with other laminin chains to form a coiled coil structure.,Function:Binding to cells via a high affinity receptor, laminin is thought to mediate the attachment, migration and organization of cells into tissues during embryonic development by interacting with other extracellular matrix components.,similarity:Contains 1 laminin IV type A domain.,similarity:Contains 1 laminin N-terminal domain.,similarity:Contains 11 laminin EGF-like domains.,subunit:Laminin is a complex glycoprotein, consisting of three different polypeptide chains (alpha, beta, gamma), which are bound to each other by disulfide bonds into a cross-shaped molecule comprising one long and three short arms with globules at each end. Gamma-1 is a subunit of laminin-1 (EHS laminin), laminin-2 (merosin), laminin-3 (S-laminin), laminin-4 (S-merosin), laminin-6 (K-laminin) and laminin-7 (KS-laminin).,tissue specificity:Found in the basement membranes (major component).,

Validation Data



Western blot analysis of lysates from HUVEC cells, using LAMC1 Antibody. The lane on the right is blocked with the synthesized peptide.



Immunohistochemical analysis of paraffin-embedded human tonsil. 1, Antibody was diluted at 1:200(4° overnight). 2, Tris-EDTA,pH9.0 was used for antigen retrieval. 3,Secondary antibody was diluted at 1:200(room temperature, 30min).

| Contact information

Orders: order@immunoway.com
Support: tech@immunoway.com
Telephone: 877-594-3616 (Toll Free), 408-747-0185
Website: <http://www.immunoway.com>
Address: 2200 Ringwood Ave San Jose, CA 95131 USA



Please scan the QR code
to access additional
product information:
**Laminin γ-1 Rabbit
pAb**

For Research Use Only. Not for Use in Diagnostic Procedures.

[Antibody](#) | [ELISA Kits](#) | [Protein](#) | [Reagents](#)