

## Laminin $\alpha$ -5 Rabbit pAb

CatalogNo: YT2527

### Key Features

#### Host Species

- Rabbit

#### Reactivity

- Human, Mouse

#### Applications

- WB, IHC, IF, ELISA

#### MW

- 400kD (Observed)

#### Isotype

- IgG

### Recommended Dilution Ratios

**WB 1:500-1:2000**

**IHC: 1:100-300**

**ELISA 1:20000**

**IF 1:100-300**

**Not yet tested in other applications.**

### Storage

#### Storage\*

-15°C to -25°C/1 year (Do not lower than -25°C)

#### Formulation

Liquid in PBS containing 50% glycerol, 0.5% BSA and 0.02% sodium azide.

### Basic Information

#### Clonality

Polyclonal

### Immunogen Information

#### Immunogen

The antiserum was produced against synthesized peptide derived from human LAMA5. AA range: 2381-2430

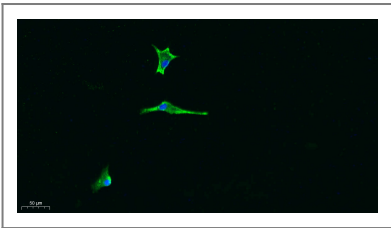
#### Specificity

Laminin  $\alpha$ -5 Polyclonal Antibody detects endogenous levels of Laminin  $\alpha$ -5 protein.

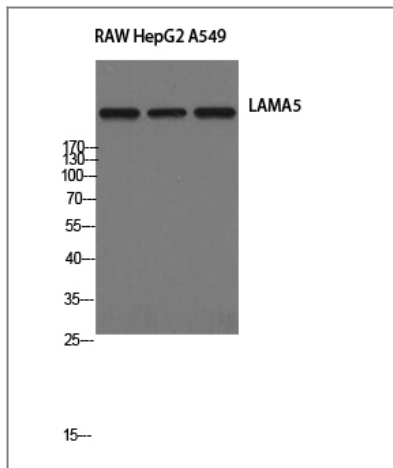
## | Target Information

Gene name	LAMA5		
Protein Name	Laminin subunit alpha-5		
	Organism	Gene ID	UniProt ID
	Human	<a href="#">3911</a> ;	<a href="#">O15230</a> ;
	Mouse	<a href="#">16776</a> ;	<a href="#">Q61001</a> ;
Cellular Localization	Secreted, extracellular space, extracellular matrix, basement membrane. Major component.		
Tissue specificity	Expressed in heart, lung, kidney, skeletal muscle, pancreas, retina and placenta. Little or no expression in brain and liver.		
Function	Domain:Domain G is globular and is part of the major cell-binding site located in the long arm of the laminin heterotrimer.,Function:Binding to cells via a high affinity receptor, laminin is thought to mediate the attachment, migration and organization of cells into tissues during embryonic development by interacting with other extracellular matrix components.,similarity:Contains 1 laminin IV type A domain.,similarity:Contains 1 laminin N-terminal domain.,similarity:Contains 22 laminin EGF-like domains.,similarity:Contains 5 laminin G-like domains.,subcellular location:Major component.,subunit:Laminin-15 complex is an heterotrimer composed of three chains (alpha-5/beta-2/gamma-3) which are bound to each other by disulfide bonds into a cross-shaped molecule comprising one long and three short arms with globules at each end.,tissue specificity:Expressed in heart, lung, kidney, skeletal muscle, pancreas, retina and placenta. Little or no expression in brain and liver.,		

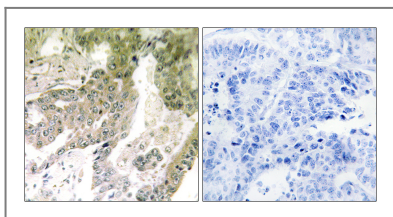
## | Validation Data



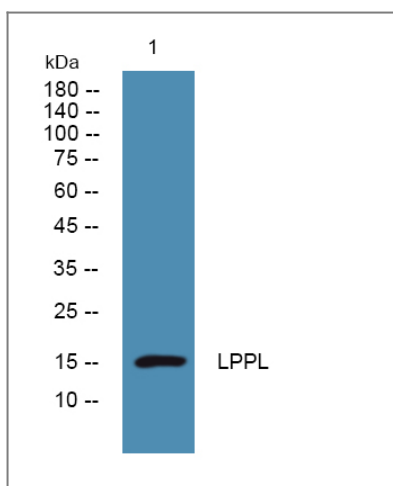
Immunofluorescence analysis of A549. 1,primary Antibody was diluted at 1:200(4°C overnight). 2, Goat Anti Rabbit IgG (H&L) - Alexa Fluor 488 Secondary antibody was diluted at 1:1000(room temperature, 50min).3, DAPI(blue) 10min.



Western Blot analysis of RAW HepG2 A549 cells using Laminin  $\alpha$ -5 Polyclonal Antibody



Immunohistochemistry analysis of paraffin-embedded human lung carcinoma tissue, using LAMA5 Antibody. The picture on the right is blocked with the synthesized peptide.



Western blot analysis of lysates from DU145 cells, primary antibody was diluted at 1:1000, 4° over night

## Contact information

Orders: [order@immunoway.com](mailto:order@immunoway.com)  
 Support: [tech@immunoway.com](mailto:tech@immunoway.com)  
 Telephone: 877-594-3616 (Toll Free), 408-747-0185  
 Website: <http://www.immunoway.com>  
 Address: 2200 Ringwood Ave San Jose, CA 95131 USA



Please scan the QR code  
 to access additional  
 product information:  
**Laminin  $\alpha$ -5 Rabbit  
 pAb**