

## Lad Rabbit pAb

CatalogNo: YT2518

### Key Features

#### Host Species

- Rabbit

#### Reactivity

- Human, Mouse

#### Applications

- WB, IHC, IF, ELISA

#### MW

- 48kD (Observed)

#### Isotype

- IgG

### Recommended Dilution Ratios

**WB 1:500-1:2000**

**IHC 1:100-1:300**

**ELISA 1:10000**

**IF 1:50-200**

### Storage

#### Storage\*

-15°C to -25°C/1 year (Do not lower than -25°C)

#### Formulation

Liquid in PBS containing 50% glycerol, 0.5% BSA and 0.02% sodium azide.

### Basic Information

#### Clonality

Polyclonal

### Immunogen Information

#### Immunogen

The antiserum was produced against synthesized peptide derived from human SH2D2A. AA range: 211-260

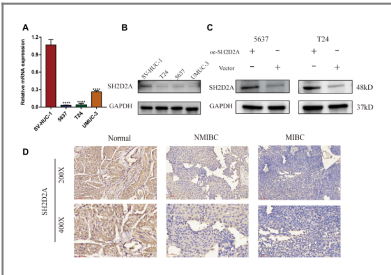
#### Specificity

Lad Polyclonal Antibody detects endogenous levels of Lad protein.

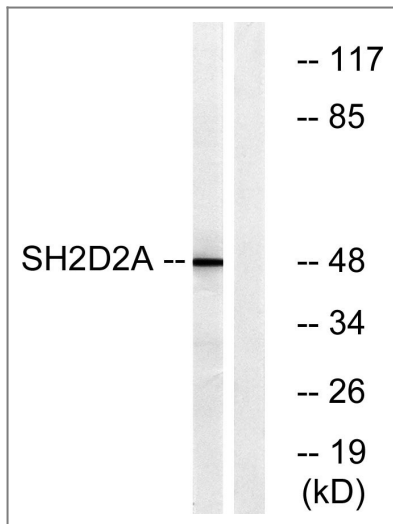
### Target Information

Gene name	SH2D2A		
Protein Name	SH2 domain-containing protein 2A		
	Organism	Gene ID	UniProt ID
	Human	<a href="#">9047</a> ;	<a href="#">Q9NP31</a> ;
	Mouse		<a href="#">Q9QXK9</a> ;
Cellular Localization	Cytoplasm.		
Tissue specificity	<p>Expression limited to tissues of the immune system and, in particular, activated T-cells. Expressed in peripheral blood leukocytes, thymus and spleen. Much lower expression or undetectable, in brain, placenta, skeletal muscle, prostate, testis, ovary, small intestine, and colon. Expressed at low levels in unstimulated T-cells, but not expressed in normal resting or activated B-cells. According to PubMed:10692392, expression is not restricted to activated T-cells, but strongly expressed in blood cell lineages, the endothelium and other cell and tissue types, such as heart, lung, and liver.</p>		
Function	<p>Function:Could be a T-cell-specific adapter protein involved in the control of T-cell activation. May play a role in the CD4-p56-LCK-dependent signal transduction pathway. Could also play an important role in normal and pathological angiogenesis. Could be an adapter protein that facilitates and regulates interaction of KDR with effector proteins important to endothelial cell survival and proliferation.,induction:Rapidly induced after activation of T-cells. However, the gene continues to be expressed in long-term cultures of activated T-cells.,PTM:Phosphorylated on tyrosine residues.,similarity:Contains 1 SH2 domain.,subunit:Interacts with KDR.,tissue specificity:Expression limited to tissues of the immune system and, in particular, activated T-cells. Expressed in peripheral blood leukocytes, thymus and spleen. Much lower expression or undetectable, in brain, placenta, skeletal muscle, prostate, testis, ovary, small intestine, and colon. Expressed at low levels in unstimulated T-cells, but not expressed in normal resting or activated B-cells. According to PubMed:10692392 expression is not restricted to activated T-cells, but strongly expressed in blood cell lineages, the endothelium and other cell and tissue types, such as heart, lung, and liver.,</p>		

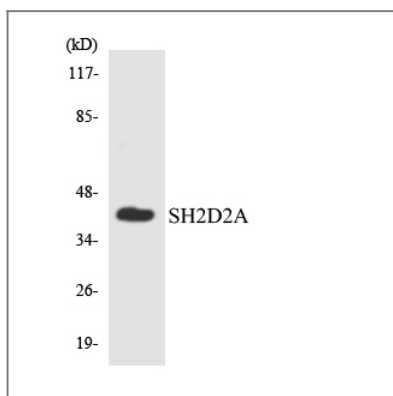
Validation Data



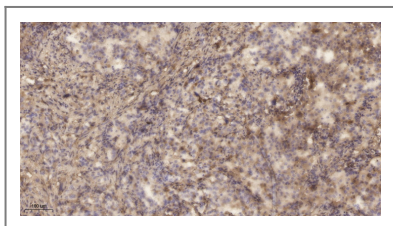
A novel CD8+ T cell-related gene signature for predicting the prognosis and immunotherapy efficacy in bladder cancer. INFLAMMATION RESEARCH Xu Ning WB Human 1:1000 5637 cell,T24 cell,UMUC-3 cell,SV-HUC-1 cell



Western blot analysis of lysates from HepG2 cells, using SH2D2A Antibody. The lane on the right is blocked with the synthesized peptide.



Western blot analysis of the lysates from HUVEC cells using SH2D2A antibody.



Immunohistochemical analysis of paraffin-embedded human lung cancer. 1, Antibody was diluted at 1:200(4° overnight). 2, Tris-EDTA, pH9.0 was used for antigen retrieval. 3, Secondary antibody was diluted at 1:200(room temperature, 45min).

## Contact information

Orders: [order@immunoway.com](mailto:order@immunoway.com)  
 Support: [tech@immunoway.com](mailto:tech@immunoway.com)  
 Telephone: 877-594-3616 (Toll Free), 408-747-0185  
 Website: <http://www.immunoway.com>  
 Address: 2200 Ringwood Ave San Jose, CA 95131 USA



Please scan the QR code to access additional product information:  
**Lad Rabbit pAb**