

## Kpm Rabbit pAb

CatalogNo: YT2494

### Key Features

#### Host Species

- Rabbit

#### Reactivity

- Human, Mouse

#### Applications

- IHC, IF, ELISA

#### MW

- 120kD (Calculated)

#### Isotype

- IgG

### Recommended Dilution Ratios

**IHC 1:100-1:300**

**IF 1:200-1:1000**

**ELISA 1:20000**

**Not yet tested in other applications.**

### Storage

#### Storage\*

-15°C to -25°C/1 year (Do not lower than -25°C)

#### Formulation

Liquid in PBS containing 50% glycerol, 0.5% BSA and 0.02% sodium azide.

### Basic Information

#### Clonality

Polyclonal

### Immunogen Information

#### Immunogen

The antiserum was produced against synthesized peptide derived from human LATS2. AA range: 541-590

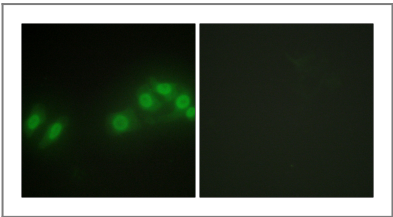
#### Specificity

Kpm Polyclonal Antibody detects endogenous levels of Kpm protein.

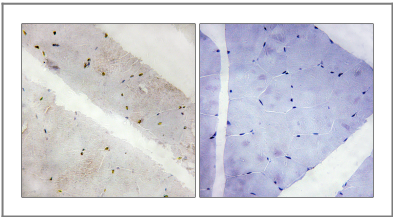
### Target Information

|                       |   |                        |                         |
|-----------------------|---|------------------------|-------------------------|
| Gene name             | LATS2   |                        |                         |
| Protein Name          | Serine/threonine-protein kinase LATS2   |                        |                         |
|                       | Organism  | Gene ID                | UniProt ID              |
|                       | Human   | <a href="#">26524;</a> | <a href="#">Q9NRM7;</a> |
|                       | Mouse   | <a href="#">50523;</a> | <a href="#">Q7TSJ6;</a> |
| Cellular Localization | Cytoplasm, cytoskeleton, microtubule organizing center, centrosome. Cytoplasm. Cytoplasm, cytoskeleton, spindle pole. Nucleus. Colocalizes with AURKA at the centrosomes during interphase, early prophase and cytokinesis. Migrates to the spindle poles during mitosis, and to the midbody during cytokinesis. Translocates to the nucleus upon mitotic stress by nocodazole treatment.   |                        |                         |
| Tissue specificity    | Expressed at high levels in heart and skeletal muscle and at lower levels in all other tissues examined.  |                        |                         |
| Function              | Catalytic activity:ATP + a protein = ADP + a phosphoprotein.,cofactor:Magnesium.,Function:Tumor suppressor which plays a critical role in centrosome duplication, maintenance of mitotic fidelity and genomic stability. Negatively regulates G1/S transition by down-regulating cyclin E/CDK2 kinase activity. Negative regulator of the androgen receptor.,PTM:Autophosphorylated and phosphorylated during M-phase and the G1/S-phase of the cell cycle. Phosphorylated and activated by STK3.,similarity:Belongs to the protein kinase superfamily.,similarity:Belongs to the protein kinase superfamily. AGC Ser/Thr protein kinase family.,similarity:Contains 1 AGC-kinase C-terminal domain.,similarity:Contains 1 protein kinase domain.,similarity:Contains 1 UBA domain.,subcellular location:Co-localizes with STK6 at the centrosomes during interphase, early prophase and cytokinesis. Migrates to the spindle poles during mitosis, and to the midbody during cytokinesis.,subunit:Interacts with and is phosphorylated by STK6. Binds to AR. Interacts with JUB during mitosis and this complex regulates organization of the spindle apparatus through recruitment of gamma-tubulin to the centrosome.,tissue specificity:Expressed at high levels in heart and skeletal muscle and at lower levels in all other tissues examined., |                        |                         |

## Validation Data



Immunofluorescence analysis of HepG2 cells, using LATS2 Antibody. The picture on the right is blocked with the synthesized peptide.



Immunohistochemistry analysis of paraffin-embedded human skeletal muscle tissue, using LATS2 Antibody. The picture on the right is blocked with the synthesized peptide.

## | Contact information

Orders: order@immunoway.com  
Support: tech@immunoway.com  
Telephone: 877-594-3616 (Toll Free), 408-747-0185  
Website: <http://www.immunoway.com>  
Address: 2200 Ringwood Ave San Jose, CA 95131 USA



Please scan the QR code  
to access additional  
product information:  
**Kpm Rabbit pAb**

---

For Research Use Only. Not for Use in Diagnostic Procedures.

[Antibody](#) | [ELISA Kits](#) | [Protein](#) | [Reagents](#)