

## KPI-2 Rabbit pAb

CatalogNo: YT2493

### Key Features

#### Host Species

- Rabbit

#### Reactivity

- Human, Mouse

#### Applications

- WB, IHC, IF, ELISA

#### MW

- 164kD (Observed)

#### Isotype

- IgG

### Recommended Dilution Ratios

**WB 1:500-1:2000**

**IHC 1:100-1:300**

**IF 1:200-1:1000**

**ELISA 1:20000**

**Not yet tested in other applications.**

### Storage

#### Storage\*

-15°C to -25°C/1 year (Do not lower than -25°C)

#### Formulation

Liquid in PBS containing 50% glycerol, 0.5% BSA and 0.02% sodium azide.

### Basic Information

#### Clonality

Polyclonal

### Immunogen Information

#### Immunogen

The antiserum was produced against synthesized peptide derived from human LMTK2. AA range: 651-700

#### Specificity

KPI-2 Polyclonal Antibody detects endogenous levels of KPI-2 protein.

## Target Information

**Gene name** LMTK2

**Protein Name** Serine/threonine-protein kinase LMTK2

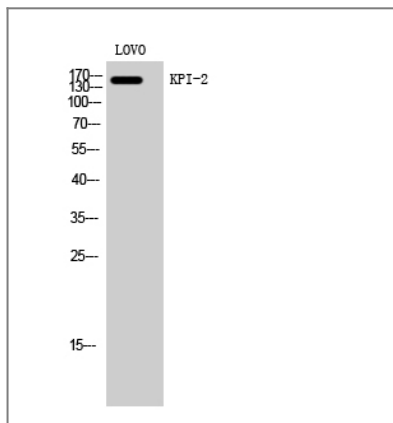
Organism	Gene ID	UniProt ID
Human	<a href="#">22853</a> ;	<a href="#">Q8IWU2</a> ;
Mouse		<a href="#">Q3TYD6</a> ;

**Cellular Localization** Membrane ; Multi-pass membrane protein .

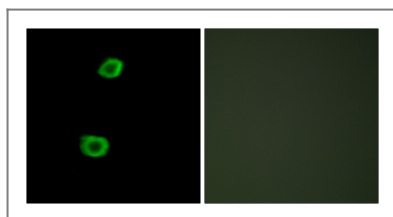
**Tissue specificity** Mainly expressed in skeletal muscle, and weakly in brain and pancreas.

**Function** Catalytic activity:ATP + a protein = ADP + a phosphoprotein.,Function:Phosphorylates PPP1C, phosphorylase b and CFTR.,online information:LMTK2 entry,PTM:Autophosphorylated. Phosphorylated.,similarity:Belongs to the protein kinase superfamily. Tyr protein kinase family.,similarity:Contains 1 protein kinase domain.,subunit:Interacts with PPP1C and inhibitor-2.,tissue specificity:Mainly expressed in skeletal muscle, and weakly in brain and pancreas.,

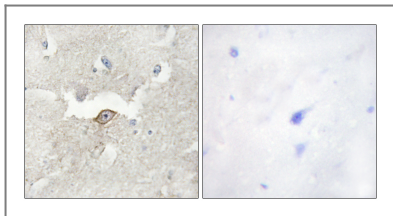
## Validation Data



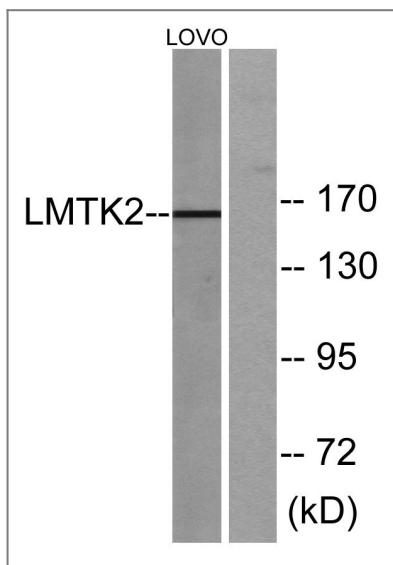
Western Blot analysis of LOVO cells using KPI-2 Polyclonal Antibody



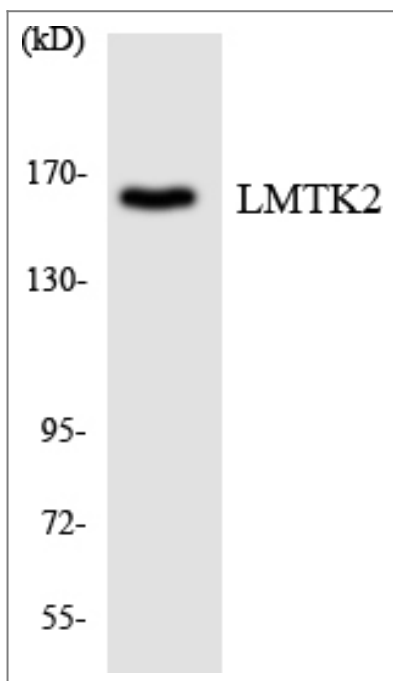
Immunofluorescence analysis of HepG2 cells, using LMTK2 Antibody. The picture on the right is blocked with the synthesized peptide.



Immunohistochemistry analysis of paraffin-embedded human brain tissue, using LMTK2 Antibody. The picture on the right is blocked with the synthesized peptide.



Western blot analysis of lysates from LOVO cells, using LMTK2 Antibody. The lane on the right is blocked with the synthesized peptide.



Western blot analysis of the lysates from COLO205 cells using LMTK2 antibody.

## Contact information

Orders: [order@immunoway.com](mailto:order@immunoway.com)  
 Support: [tech@immunoway.com](mailto:tech@immunoway.com)  
 Telephone: 877-594-3616 (Toll Free), 408-747-0185  
 Website: <http://www.immunoway.com>  
 Address: 2200 Ringwood Ave San Jose, CA 95131 USA



Please scan the QR code to access additional product information:  
**KPI-2 Rabbit pAb**

