

KLHL3 Rabbit pAb

CatalogNo: YT2486

| Key Features

Host Species

- Rabbit

Reactivity

- Human, Mouse, Rat

Applications

- WB, IHC, IF, ELISA

MW

- 65kD (Observed)

Isotype

- IgG

| Recommended Dilution Ratios

WB 1:500-1:2000

IHC 1:100-1:300

IF 1:200-1:1000

ELISA 1:20000

Not yet tested in other applications.

| Storage

Storage*

-15°C to -25°C/1 year (Do not lower than -25°C)

Formulation

Liquid in PBS containing 50% glycerol, 0.5% BSA and 0.02% sodium azide.

| Basic Information

Clonality

Polyclonal

| Immunogen Information

Immunogen

The antiserum was produced against synthesized peptide derived from human KLHL3. AA range: 10-59

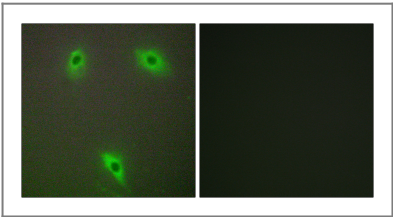
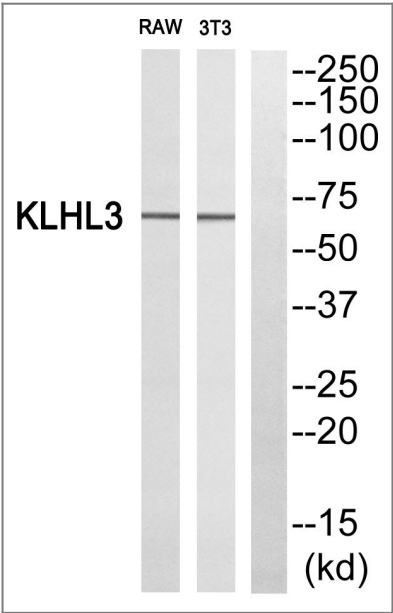
Specificity

KLHL3 Polyclonal Antibody detects endogenous levels of KLHL3 protein.

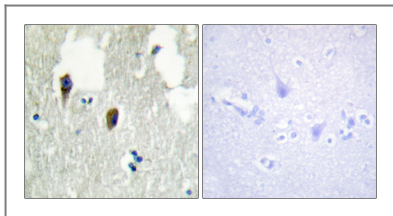
Target Information

| | | | |
|-----------------------|--|-------------------------|--------------------------|
| Gene name | KLHL3 | | |
| Protein Name | Kelch-like protein 3 | | |
| | Organism | Gene ID | UniProt ID |
| | Human | 26249 ; | Q9UH77 ; |
| | Mouse | | E0CZ16 ; |
| Cellular Localization | Cytoplasm, cytoskeleton . Cytoplasm, cytosol . | | |
| Tissue specificity | Widely expressed. | | |
| Function | Function:Probable substrate-specific adapter of an E3 ubiquitin-protein ligase complex which mediates the ubiquitination and subsequent proteasomal degradation of target proteins.,pathway:Protein modification; protein ubiquitination.,similarity:Contains 1 BTB (POZ) domain.,similarity:Contains 6 Kelch repeats.,subunit:Interacts with cul3.,tissue specificity:Seems to be expressed in a variety of tissues., | | |

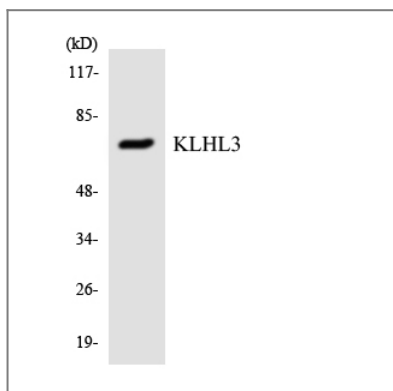
Validation Data



Immunofluorescence analysis of A549 cells, using KLHL3 Antibody. The picture on the right is blocked with the synthesized peptide.



Immunohistochemistry analysis of paraffin-embedded human brain tissue, using KLHL3 Antibody. The picture on the right is blocked with the synthesized peptide.



Western blot analysis of the lysates from COLO205 cells using KLHL3 antibody.

Contact information

Orders: order@immunoway.com
 Support: tech@immunoway.com
 Telephone: 877-594-3616 (Toll Free), 408-747-0185
 Website: <http://www.immunoway.com>
 Address: 2200 Ringwood Ave San Jose, CA 95131 USA



Please scan the QR code to access additional product information:
KLHL3 Rabbit pAb

For Research Use Only. Not for Use in Diagnostic Procedures.

[Antibody](#) | [ELISA Kits](#) | [Protein](#) | [Reagents](#)