

KKIAMRE Rabbit pAb

CatalogNo: YT2482

| Key Features

Host Species

- Rabbit

Reactivity

- Human,Rat,Mouse,

Applications

- WB,IHC,IF,ELISA

MW

- 56kD (Observed)

Isotype

- IgG

| Recommended Dilution Ratios

WB 1:500-1:2000

IHC 1:100-1:300

ELISA 1:10000

IF 1:50-200

| Storage

Storage*

-15°C to -25°C/1 year(Do not lower than -25°C)

Formulation

Liquid in PBS containing 50% glycerol, 0.5% BSA and 0.02% sodium azide.

| Basic Information

Clonality

Polyclonal

| Immunogen Information

Immunogen

The antiserum was produced against synthesized peptide derived from human CDKL2.
AA range:211-260

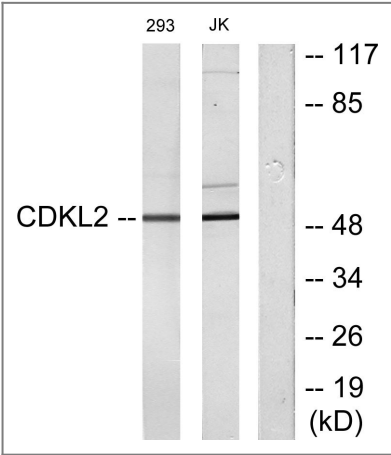
Specificity

KKIAMRE Polyclonal Antibody detects endogenous levels of KKIAMRE protein.

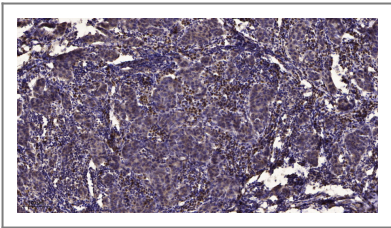
| Target Information

Gene name	CDKL2		
Protein Name	Cyclin-dependent kinase-like 2		
	Organism	Gene ID	UniProt ID
	Human	8999 ;	Q92772 ;
	Mouse		Q9QUK0 ;
Cellular Localization	Cytoplasm . Nucleus .		
Tissue specificity	Expressed in testis and kidney, and at lower level in brain and lung.		
Function	Catalytic activity:ATP + a protein = ADP + a phosphoprotein.,Domain:The [NKR]KIAxRE motif seems to be a cyclin-binding region.,similarity:Belongs to the protein kinase superfamily. CMGC Ser/Thr protein kinase family. CDC2/CDKX subfamily.,similarity:Contains 1 protein kinase domain.,tissue specificity:Expressed in testis and kidney, and at lower level in brain and lung.,		

| Validation Data



Western blot analysis of lysates from Jurkat and 293 cells, using CDKL2 Antibody. The lane on the right is blocked with the synthesized peptide.



Immunohistochemical analysis of paraffin-embedded human Breast cancer. 1, Antibody was diluted at 1:200(4° overnight). 2, Tris-EDTA,pH9.0 was used for antigen retrieval. 3,Secondary antibody was diluted at 1:200(room temperature, 45min).

| Contact information

Orders: order@immunoway.com
Support: tech@immunoway.com
Telephone: 877-594-3616 (Toll Free), 408-747-0185
Website: <http://www.immunoway.com>
Address: 2200 Ringwood Ave San Jose, CA 95131 USA



Please scan the QR code
to access additional
product information:
**KKIAMRE Rabbit
pAb**

For Research Use Only. Not for Use in Diagnostic Procedures.

[Antibody](#) | [ELISA Kits](#) | [Protein](#) | [Reagents](#)