

Keratin 37/38 Rabbit pAb

CatalogNo: YT2465

| Key Features

Host Species

- Rabbit

Reactivity

- Human

Applications

- WB,ELISA,IHC

MW

- 50kD (Observed)

Isotype

- IgG

| Recommended Dilution Ratios

WB 1:500-2000

IHC 1:50-300

ELISA 1:2000-20000

| Storage

Storage*

-15°C to -25°C/1 year(Do not lower than -25°C)

Formulation

Liquid in PBS containing 50% glycerol, 0.5% BSA and 0.02% sodium azide.

| Basic Information

Clonality

Polyclonal

| Immunogen Information

Immunogen

The antiserum was produced against synthesized peptide derived from human KRT37/38. AA range:201-250

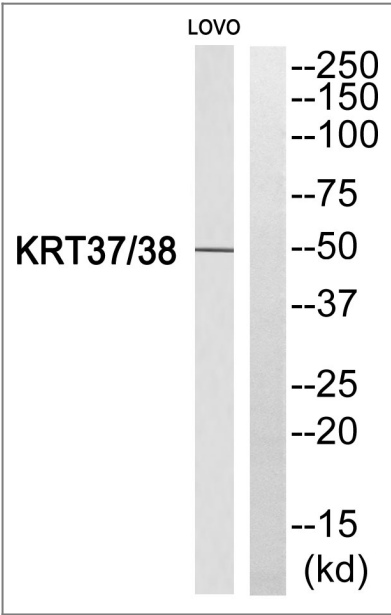
Specificity

Keratin 37/38 Polyclonal Antibody detects endogenous levels of Keratin 37/38 protein.

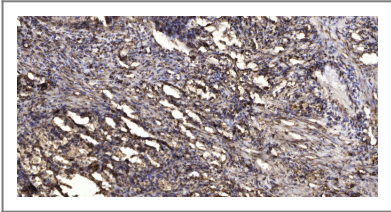
| Target Information

Gene name	KRT37/KRT38		
Protein Name	Keratin type I cuticular Ha7/Keratin type I cuticular Ha8		
	Organism	Gene ID	UniProt ID
	Human	8688 ;	O76014 ; O76015 ;
Cellular Localization	intermediate filament,extracellular exosome,		
Tissue specificity	Scalp,		
Function	miscellaneous:There are two types of hair/microfibrillar keratin, I (acidic) and II (neutral to basic).,similarity:Belongs to the intermediate filament family.,		

| Validation Data



Western blot analysis of KRT37/38 Antibody. The lane on the right is blocked with the KRT37/38 peptide.



Immunohistochemical analysis of paraffin-embedded human Squamous cell carcinoma of lung. 1, Antibody was diluted at 1:200(4° overnight). 2, Tris-EDTA,pH9.0 was used for antigen retrieval. 3,Secondary antibody was diluted at 1:200(room temperature, 45min).

| Contact information

Orders: order@immunoway.com
Support: tech@immunoway.com
Telephone: 877-594-3616 (Toll Free), 408-747-0185
Website: http://www.immunoway.com
Address: 2200 Ringwood Ave San Jose, CA 95131 USA



Please scan the QR code
to access additional
product information:
Keratin 37/38
Rabbit pAb

For Research Use Only. Not for Use in Diagnostic Procedures.

[Antibody](#) | [ELISA Kits](#) | [Protein](#) | [Reagents](#)