

KCNH3 Rabbit pAb

CatalogNo: YT2457

| Key Features

Host Species

- Rabbit

Reactivity

- Human, Mouse, Rat

Applications

- WB, IHC

MW

- 120kD (Observed)

Isotype

- IgG

| Recommended Dilution Ratios

WB 1:500-2000

IHC 1:50-300

| Storage

Storage* -15°C to -25°C/1 year (Do not lower than -25°C)

Formulation Liquid in PBS containing 50% glycerol, 0.5% BSA and 0.02% sodium azide.

| Basic Information

Clonality Polyclonal

| Immunogen Information

Immunogen Synthesized peptide derived from KCNH3 . at AA range: 470-550

Specificity KCNH3 Polyclonal Antibody detects endogenous levels of KCNH3 protein.

| Target Information

Gene name KCNH3

Protein Name Potassium voltage-gated channel subfamily H member 3

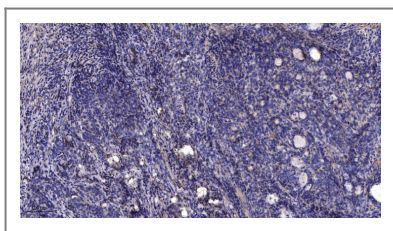
Organism	Gene ID	UniProt ID
Human	23416 ;	Q9ULD8 ;
Mouse		Q9WVJ0 ;
Rat	27150 ;	O89047 ;

Cellular Localization Membrane; Multi-pass membrane protein.

Tissue specificity Detected only in brain, in particular in the telencephalon. Detected in the cerebral cortex, occipital pole, frontal and temporal lobe, putamen, amygdala, hippocampus and caudate nucleus.

Function Domain:The segment S4 is probably the voltage-sensor and is characterized by a series of positively charged amino acids at every third position.,Function:Pore-forming (alpha) subunit of voltage-gated potassium channel. Elicits an outward current with fast inactivation. Channel properties may be modulated by cAMP and subunit assembly.,similarity:Belongs to the potassium channel family. H (Eag) subfamily.,similarity:Contains 1 cyclic nucleotide-binding domain.,similarity:Contains 1 PAC (PAS-associated C-terminal) domain.,similarity:Contains 1 PAS (PER-ARNT-SIM) domain.,subunit:The potassium channel is probably composed of a homo- or heterotetrameric complex of pore-forming alpha subunits that can associate with modulating beta subunits.,tissue specificity:Detected only in brain, in particular in the telencephalon. Detected in the cerebral cortex, occipital pole, frontal and temporal lobe, putamen, amygdala, hippocampus and caudate nucleus.,

Validation Data



Immunohistochemical analysis of paraffin-embedded human Gastric adenocarcinoma. 1, Antibody was diluted at 1:200(4° overnight). 2, Tris-EDTA,pH9.0 was used for antigen retrieval. 3,Secondary antibody was diluted at 1:200(room temperature, 45min).

Contact information

Orders: order@immunoway.com
Support: tech@immunoway.com
Telephone: 877-594-3616 (Toll Free), 408-747-0185
Website: <http://www.immunoway.com>
Address: 2200 Ringwood Ave San Jose, CA 95131 USA



Please scan the QR code to access additional product information:
KCNH3 Rabbit pAb

