

KALIG-1 Rabbit pAb

CatalogNo: YT2448

Key Features

Host Species

- Rabbit

Reactivity

- Human

Applications

- WB,IHC

MW

- 76kD (Observed)

Isotype

- IgG

Recommended Dilution Ratios

WB 1:500-2000

IHC 1:50-300

Storage

Storage* -15°C to -25°C/1 year(Do not lower than -25°C)

Formulation Liquid in PBS containing 50% glycerol, 0.5% BSA and 0.02% sodium azide.

Basic Information

Clonality Polyclonal

Immunogen Information

Immunogen The antiserum was produced against synthesized peptide derived from human KAL1. AA range:151-200

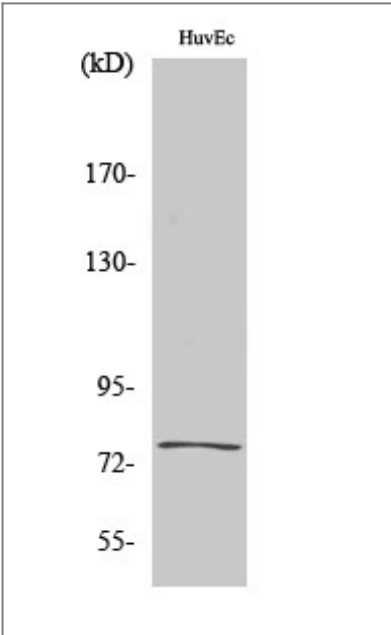
Specificity KALIG-1 Polyclonal Antibody detects endogenous levels of KALIG-1 protein.

Target Information

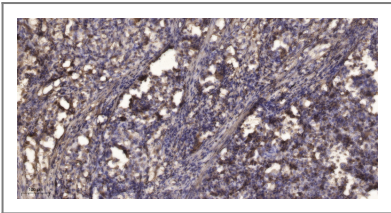
Gene name KAL1

Protein Name	Anosmin-1		
	Organism	Gene ID	UniProt ID
	Human	3730;	P23352;
Cellular Localization	Cell membrane ; Peripheral membrane protein . Secreted . Proteolytic cleavage may release it from the cell surface into the extracellular space.		
Tissue specificity	Expressed in the cerebellum (at protein level).		
Function	Disease:Defects in KAL1 are the cause of Kallmann syndrome type 1 (KAL1) [MIM:308700]; also known as hypogonadotropic hypogonadism and anosmia. Anosmia or hyposmia is related to the absence or hypoplasia of the olfactory bulbs and tracts. Hypogonadism is due to deficiency in gonadotropin-releasing hormone and probably results from a failure of embryonic migration of gonadotropin-releasing hormone-synthesizing neurons. In some patients other developmental anomalies can be present, which include renal agenesis, cleft lip and/or palate, selective tooth agenesis, and bimanual synkinesis. In some cases anosmia may be absent or inconspicuous.,Function:May be an adhesion-like molecule with anti-protease activity.,PTM:N-glycosylated.,similarity:Contains 1 WAP domain.,similarity:Contains 4 fibronectin type-III domains.,		

Validation Data



Western Blot analysis of various cells using KALIG-1 Polyclonal Antibody



Immunohistochemical analysis of paraffin-embedded human Squamous cell carcinoma of lung. 1, Antibody was diluted at 1:200(4° overnight). 2, Tris-EDTA,pH9.0 was used for antigen retrieval. 3,Secondary antibody was diluted at 1:200(room temperature, 45min).

| Contact information

Orders: order@immunoway.com
Support: tech@immunoway.com
Telephone: 877-594-3616 (Toll Free), 408-747-0185
Website: <http://www.immunoway.com>
Address: 2200 Ringwood Ave San Jose, CA 95131 USA



Please scan the QR code
to access additional
product information:
KALIG-1 Rabbit pAb

For Research Use Only. Not for Use in Diagnostic Procedures.

[Antibody](#) | [ELISA Kits](#) | [Protein](#) | [Reagents](#)