

JIK Rabbit pAb

CatalogNo: YT2433

Key Features

Host Species

- Rabbit

Reactivity

- Human, Mouse, Rat

Applications

- WB, ELISA, IHC

MW

- 110kD (Observed)

Isotype

- IgG

Storage

Storage* -15°C to -25°C/1 year (Do not lower than -25°C)

Formulation Liquid in PBS containing 50% glycerol, 0.5% BSA and 0.02% sodium azide.

Recommended Dilution Ratios

WB 1:500-2000

IHC 1:50-300

ELISA 1:2000-20000

Basic Information

Clonality Polyclonal

Immunogen Information

Immunogen The antiserum was produced against synthesized peptide derived from human TAOK3. AA range:531-580

Specificity JIK Polyclonal Antibody detects endogenous levels of JIK protein.

Target Information

Gene name TAOK3

Protein Name Serine/threonine-protein kinase TAO3

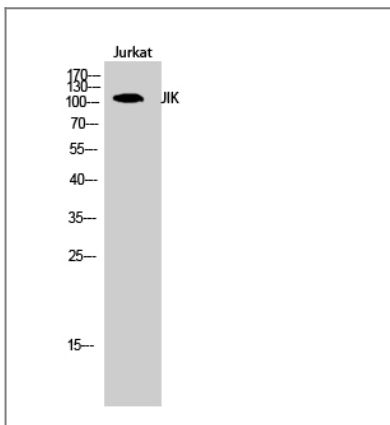
Organism	Gene ID	UniProt ID
Human	51347 ;	Q9H2K8 ;
Mouse	330177 ;	Q8BYC6 ;
Rat	304530 ;	Q53UA7 ;

Cellular Localization Cytoplasm . Cell membrane ; Peripheral membrane protein . Also localized to the peripheral cell membrane.

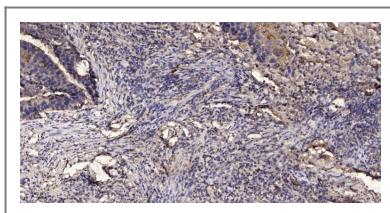
Tissue specificity Ubiquitously expressed at a low level, and highly expressed in peripheral blood leukocytes (PBLs), thymus, spleen, kidney, skeletal muscle, heart and liver.

Function Catalytic activity:ATP + a protein = ADP + a phosphoprotein.,Function:Inhibits the basal activity of Jun kinase. Negatively regulated by epidermal growth factor (EGF). When overexpressed, may activate ERK1/ERK2 and JNK/SAPK.,PTM:Autophosphorylated. Phosphorylated upon DNA damage, probably by ATM or ATR.,similarity:Belongs to the protein kinase superfamily. STE Ser/Thr protein kinase family. STE20 subfamily.,similarity:Contains 1 protein kinase domain.,subcellular location:Also localized to the peripheral cell membrane.,subunit:Self-associates.,tissue specificity:Ubiquitously expressed at a low level, and highly expressed in peripheral blood leukocytes (PBLs), thymus, spleen, kidney, skeletal muscle, heart and liver.,

Validation Data



Western Blot analysis of Jurkat cells using JIK Polyclonal Antibody



Immunohistochemical analysis of paraffin-embedded human Squamous cell carcinoma of lung. 1, Antibody was diluted at 1:200(4° overnight). 2, Tris-EDTA,pH9.0 was used for antigen retrieval. 3,Secondary antibody was diluted at 1:200(room temperature, 45min).

| Contact information

Orders: order@immunoway.com
Support: tech@immunoway.com
Telephone: 877-594-3616 (Toll Free), 408-747-0185
Website: <http://www.immunoway.com>
Address: 2200 Ringwood Ave San Jose, CA 95131 USA



Please scan the QR code
to access additional
product information:
JK Rabbit pAb

For Research Use Only. Not for Use in Diagnostic Procedures.

[Antibody](#) | [ELISA Kits](#) | [Protein](#) | [Reagents](#)