

Jamip2 Rabbit pAb

CatalogNo: YT2431

Key Features

Host Species

- Rabbit

Reactivity

- Human

Applications

- WB,IHC,IF,ELISA

MW

- 95kD (Observed)

Isotype

- IgG

Recommended Dilution Ratios

WB 1:500-1:2000

IHC 1:100-1:300

IF 1:200-1:1000

ELISA 1:10000

Not yet tested in other applications.

Storage

Storage*

-15°C to -25°C/1 year(Do not lower than -25°C)

Formulation

Liquid in PBS containing 50% glycerol, 0.5% BSA and 0.02% sodium azide.

Basic Information

Clonality

Polyclonal

Immunogen Information

Immunogen

The antiserum was produced against synthesized peptide derived from human JAKMIP2. AA range:761-810

Specificity

Jamip2 Polyclonal Antibody detects endogenous levels of Jamip2 protein.

| Target Information

Gene name JAKMIP2

Protein Name Janus kinase and microtubule-interacting protein 2

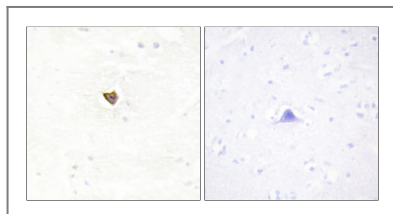
Organism	Gene ID	UniProt ID
Human	9832 ;	Q96AA8 ;

Cellular Localization Golgi apparatus .

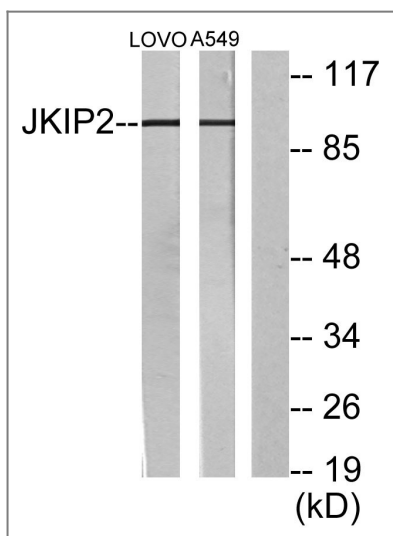
Tissue specificity Highly expressed in brain, moderately expressed in thymus, spleen and lung, and weakly expressed in kidney, liver and peripheral blood lymphocytes. Also expressed in adrenal and pituitary glands, as well as testis.

Function similarity:Belongs to the JAKMIP family.,tissue specificity:Highly expressed in brain, moderately expressed in thymus, spleen and lung, and weakly expressed in kidney, liver and peripheral blood lymphocytes. Aslo expressed in adrenal and pituitary glands, as well as testis.,

| Validation Data



Immunohistochemistry analysis of paraffin-embedded human brain tissue, using JAKMIP2 Antibody. The picture on the right is blocked with the synthesized peptide.



Western blot analysis of lysates from LOVO and A549 cells, using JAKMIP2 Antibody. The lane on the right is blocked with the synthesized peptide.

| Contact information

Orders: order@immunoway.com
Support: tech@immunoway.com
Telephone: 877-594-3616 (Toll Free), 408-747-0185
Website: <http://www.immunoway.com>
Address: 2200 Ringwood Ave San Jose, CA 95131 USA



Please scan the QR code
to access additional
product information:
Jamip2 Rabbit pAb

For Research Use Only. Not for Use in Diagnostic Procedures.

[Antibody](#) | [ELISA Kits](#) | [Protein](#) | [Reagents](#)