

## IPP-2 Rabbit pAb

CatalogNo: YT2386

### Key Features

#### Host Species

- Rabbit

#### Reactivity

- Human, Mouse, Rat

#### Applications

- WB, IHC, IF, ELISA

#### MW

- 25kD (Observed)

#### Isotype

- IgG

### Storage

**Storage\*** -15°C to -25°C/1 year (Do not lower than -25°C)

**Formulation** Liquid in PBS containing 50% glycerol, 0.5% BSA and 0.02% sodium azide.

### Recommended Dilution Ratios

**WB 1:500-1:2000**

**IHC 1:100-1:300**

**ELISA 1:5000**

**IF 1:50-200**

### Basic Information

**Clonality** Polyclonal

### Immunogen Information

**Immunogen** The antiserum was produced against synthesized peptide derived from human PPP1R2. AA range:86-135

**Specificity** IPP-2 Polyclonal Antibody detects endogenous levels of IPP-2 protein.

### Target Information

**Gene name** PPP1R2

**Protein Name** Protein phosphatase inhibitor 2

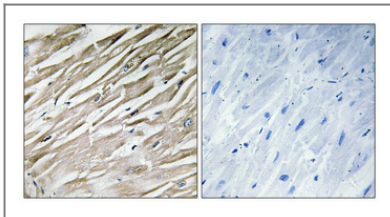
Organism	Gene ID	UniProt ID
Human	<a href="#">5504</a> ;	<a href="#">P41236</a> ;
Mouse	<a href="#">66849</a> ;	<a href="#">Q9DCL8</a> ;
Rat	<a href="#">192361</a> ;	<a href="#">P50411</a> ;

**Cellular Localization** protein phosphatase type 1 complex,

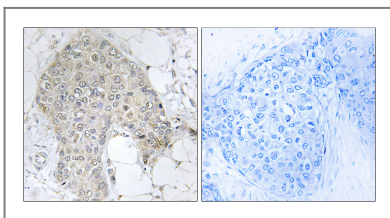
**Tissue specificity** Epithelium,Heart,Platelet,Skin,Testis,

**Function** Function:Inhibitor of protein-phosphatase 1.,PTM:Phosphorylation on Thr-73 by GSK3 activates PP1 by dissociating the PP1-PPP1R2 complex (By similarity). Phosphorylation on Ser-44 by ATM activates PP1 by dissociating the PP1-PPP1R2 complex.,similarity:Belongs to the protein phosphatase inhibitor 2 family.,subunit:Heterodimer with PP1.,

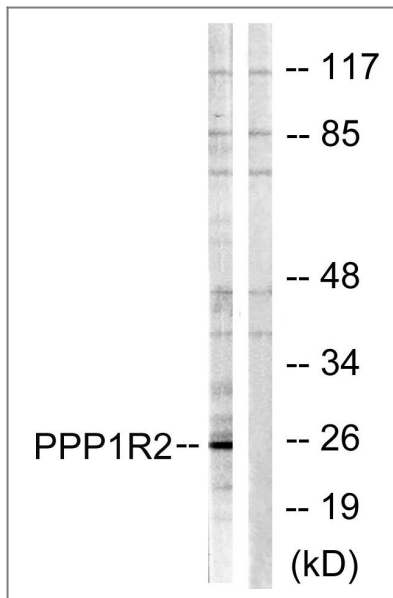
## Validation Data



Immunohistochemical analysis of paraffin-embedded Human heart. Antibody was diluted at 1:100(4° overnight). High-pressure and temperature Tris-EDTA,pH8.0 was used for antigen retrieval. Negative control (right) obtained from antibody was pre-absorbed by immunogen peptide.



Immunohistochemistry analysis of paraffin-embedded human breast carcinoma tissue, using PPP1R2 Antibody. The picture on the right is blocked with the synthesized peptide.



Western blot analysis of lysates from Jurkat cells, using PPP1R2 Antibody. The lane on the right is blocked with the synthesized peptide.

## Contact information

Orders: [order@immunoway.com](mailto:order@immunoway.com)  
Support: [tech@immunoway.com](mailto:tech@immunoway.com)  
Telephone: 877-594-3616 (Toll Free), 408-747-0185  
Website: <http://www.immunoway.com>  
Address: 2200 Ringwood Ave San Jose, CA 95131 USA



Please scan the QR code to access additional product information:  
**IPP-2 Rabbit pAb**

For Research Use Only. Not for Use in Diagnostic Procedures.

[Antibody](#) | [ELISA Kits](#) | [Protein](#) | [Reagents](#)