

InsP5 2-kinase Rabbit pAb

CatalogNo: YT2355

Key Features

Host Species

- Rabbit

Reactivity

- Human, Mouse, Rat

Applications

- WB, IHC, IF, ELISA

MW

- 56kD (Observed)

Isotype

- IgG

Recommended Dilution Ratios

WB 1:500-1:2000

IHC 1:100-1:300

IF 1:200-1:1000

ELISA 1:10000

Not yet tested in other applications.

Storage

Storage*

-15°C to -25°C/1 year (Do not lower than -25°C)

Formulation

Liquid in PBS containing 50% glycerol, 0.5% BSA and 0.02% sodium azide.

Basic Information

Clonality

Polyclonal

Immunogen Information

Immunogen

The antiserum was produced against synthesized peptide derived from human IPPK. AA range: 11-60

Specificity

InsP5 2-kinase Polyclonal Antibody detects endogenous levels of InsP5 2-kinase protein.

| Target Information

Gene name IPPK

Protein Name Inositol-pentakisphosphate 2-kinase

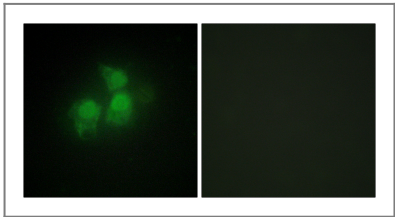
Organism	Gene ID	UniProt ID
Human	64768;	Q9H8X2;
Mouse	75678;	Q6P1C1;
Rat	306808;	Q5PXE9;

Cellular Localization Cytoplasm . Nucleus .

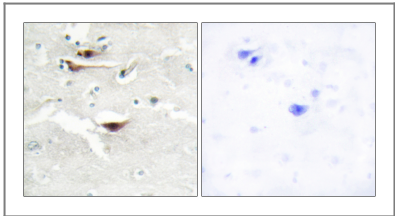
Tissue specificity Ubiquitously expressed, with high expression in heart, brain, testis and placenta.

Function Catalytic activity:ATP + 1D-myo-inositol 1,3,4,5,6-pentakisphosphate = ADP + 1D-myo-inositol hexakisphosphate.,Domain:The EXKPK motif is conserved in inositol-pentakisphosphate 2-kinases of both family 1 and 2.,Function:Phosphorylates Ins(1,3,4,5,6)P5 at position 2 to form Ins(1,2,3,4,5,6)P6 (InsP6 or phytate). InsP6 is involved in many processes such as mRNA export, non-homologous end-joining, endocytosis, ion channel regulation. It also protects cells from TNF-alpha-induced apoptosis.,similarity:Belongs to the IPK1 type 2 family.,tissue specificity:Ubiquitously expressed, with high expression in heart, brain, testis and placenta.,

| Validation Data



Immunofluorescence analysis of HepG2 cells, using IPPK Antibody. The picture on the right is blocked with the synthesized peptide.



Immunohistochemistry analysis of paraffin-embedded human brain tissue, using IPPK Antibody. The picture on the right is blocked with the synthesized peptide.

| Contact information

Orders: order@immunoway.com
Support: tech@immunoway.com
Telephone: 877-594-3616 (Toll Free), 408-747-0185
Website: <http://www.immunoway.com>
Address: 2200 Ringwood Ave San Jose, CA 95131 USA



Please scan the QR code
to access additional
product information:
**InsP5 2-kinase
Rabbit pAb**

For Research Use Only. Not for Use in Diagnostic Procedures.

[Antibody](#) | [ELISA Kits](#) | [Protein](#) | [Reagents](#)