

## INPP5J Rabbit pAb

CatalogNo: YT2351

### Key Features

#### Host Species

- Rabbit

#### Reactivity

- Human,Rat

#### Applications

- IHC,IF,ELISA

#### MW

- 107kD (Calculated)

#### Isotype

- IgG

### Recommended Dilution Ratios

IHC 1:100-1:300

ELISA 1:40000

IF 1:50-200

### Storage

#### Storage\*

-15°C to -25°C/1 year(Do not lower than -25°C)

#### Formulation

Liquid in PBS containing 50% glycerol, 0.5% BSA and 0.02% sodium azide.

### Basic Information

#### Clonality

Polyclonal

### Immunogen Information

#### Immunogen

Synthesized peptide derived from INPP5J . at AA range: 850-930

#### Specificity

INPP5J Polyclonal Antibody detects endogenous levels of INPP5J protein.

### Target Information

#### Gene name

INPP5J

**Protein Name** Phosphatidylinositol 4,5-bisphosphate 5-phosphatase A

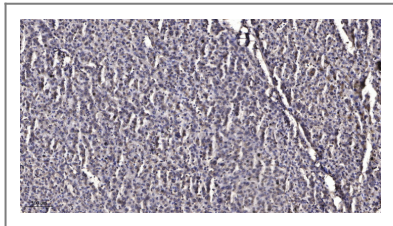
| Organism | Gene ID                 | UniProt ID              |
|----------|-------------------------|-------------------------|
| Human    | <a href="#">27124;</a>  | <a href="#">Q15735;</a> |
| Mouse    |                         | <a href="#">P59644;</a> |
| Rat      | <a href="#">171088;</a> | <a href="#">Q9JMC1;</a> |

**Cellular Localization** Cytoplasm . Predominantly localized to membrane ruffles. .

**Tissue specificity** Brain,Cerebellum,Heart,

**Function** Catalytic activity:1D-myo-inositol 1,3,4,5-tetrakisphosphate + H(2)O = 1D-myo-inositol 1,3,4-trisphosphate + phosphate.,Catalytic activity:D-myo-inositol 1,4,5-trisphosphate + H(2)O = myo-inositol 1,4-bisphosphate + phosphate.,Domain:The 5 Arg-Ser-Xaa-Ser-Xaa-Xaa (RSXSXX) motifs may constitute binding sites for the 14-3-3 protein.,Function:Inositol 5-phosphatase, which converts inositol 1,4,5-trisphosphate to inositol 1,4-bisphosphate. Also converts phosphatidylinositol 4,5-bisphosphate to phosphatidylinositol 4-phosphate and inositol 1,3,4,5-tetrakisphosphate to inositol 1,3,4-trisphosphate in vitro. May be involved in modulation of the function of inositol and phosphatidylinositol polyphosphate-binding proteins that are present at membranes ruffles.,PTM:Phosphorylated at Ser/Thr residues.,similarity:Belongs to the inositol-1,4,5-trisphosphate 5-phosphatase type II family.,subcellular location:Predominantly localized to membrane ruffles.,

## Validation Data



Immunohistochemical analysis of paraffin-embedded human liver cancer. 1, Antibody was diluted at 1:200(4° overnight). 2, Tris-EDTA,pH9.0 was used for antigen retrieval. 3,Secondary antibody was diluted at 1:200(room temperature, 45min).

## Contact information

Orders: [order@immunoway.com](mailto:order@immunoway.com)  
Support: [tech@immunoway.com](mailto:tech@immunoway.com)  
Telephone: 877-594-3616 (Toll Free), 408-747-0185  
Website: <http://www.immunoway.com>  
Address: 2200 Ringwood Ave San Jose, CA 95131 USA



Please scan the QR code to access additional product information:  
**INPP5J Rabbit pAb**