

## ILT-3 Rabbit pAb

CatalogNo: YT2348

### Key Features

#### Host Species

- Rabbit

#### Reactivity

- Human

#### Applications

- IF,ELISA

#### MW

- 49kD (Calculated)

#### Isotype

- IgG

### Recommended Dilution Ratios

**IF 1:200-1:1000**

**ELISA 1:20000**

**Not yet tested in other applications**

### Storage

#### Storage\*

-15°C to -25°C/1 year(Do not lower than -25°C)

#### Formulation

Liquid in PBS containing 50% glycerol, 0.5% BSA and 0.02% sodium azide.

### Basic Information

#### Clonality

Polyclonal

### Immunogen Information

#### Immunogen

The antiserum was produced against synthesized peptide derived from human LILRB4. AA range:201-250

#### Specificity

ILT-3 Polyclonal Antibody detects endogenous levels of ILT-3 protein.

### Target Information

**Gene name** LILRB4

**Protein Name** Leukocyte immunoglobulin-like receptor subfamily B member 4

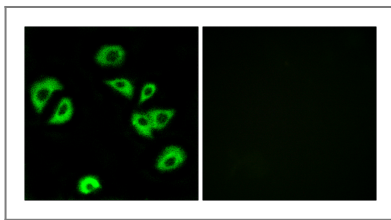
Organism	Gene ID	UniProt ID
Human	<a href="#">11006;</a>	<a href="#">Q8NHJ6;</a>
Mouse		<a href="#">Q64281;</a>

**Cellular Localization** Cell membrane ; Single-pass type I membrane protein . Ligand binding leads to internalization and translocation to an antigen-processing compartment. .

**Tissue specificity** Detected on monocytes, macrophages, dendritic cells, natural killer cells and B-cells (at protein level). Expressed in the lung.

**Function** Domain:Contains 3 copies of a cytoplasmic motif that is referred to as the immunoreceptor tyrosine-based inhibitor motif (ITIM). This motif is involved in modulation of cellular responses. The phosphorylated ITIM motif can bind the SH2 domain of several SH2-containing phosphatases.,Function:Receptor for class I MHC antigens. Recognizes a broad spectrum of HLA-A, HLA-B, HLA-C and HLA-G alleles. Involved in the down-regulation of the immune response and the development of tolerance, e.g. towards transplants. Interferes with TNFRSF5-signaling and NF-kappa-B up-regulation. Inhibits receptor-mediated phosphorylation of cellular proteins and mobilization of intracellular calcium ions.,induction:Upon contact with CD8(+)CD28(-) alloantigen-specific T suppressor (Ts) cells.,PTM:Phosphorylated.,similarity:Contains 2 Ig-like C2-type (immunoglobulin-like) domains.,subcellular location:Ligand binding leads to internalization and translocation to an antigen-processing compartment.,subunit:Binds PTPN6 when phosphorylated.,tissue specificity:Detected in monocytes, macrophages, dendritic cells, lung, natural killer cells and B-cells.,

## Validation Data



Immunofluorescence analysis of A549 cells, using LILRB4 Antibody. The picture on the right is blocked with the synthesized peptide.

## Contact information

Orders: [order@immunoway.com](mailto:order@immunoway.com)  
Support: [tech@immunoway.com](mailto:tech@immunoway.com)  
Telephone: 877-594-3616 (Toll Free), 408-747-0185  
Website: <http://www.immunoway.com>  
Address: 2200 Ringwood Ave San Jose, CA 95131 USA



Please scan the QR code to access additional product information:  
**ILT-3 Rabbit pAb**

