

## IL-3R $\beta$ Rabbit pAb

CatalogNo: YT2333

Orthogonal Validated 

### Key Features

#### Host Species

- Rabbit

#### Reactivity

- Human, Mouse, Rat

#### Applications

- WB, IHC, IF, ELISA

#### MW

- 125kD (Observed)

#### Isotype

- IgG

### Recommended Dilution Ratios

WB 1:500-1:2000

IHC 1:100-1:300

ELISA 1:5000

IF 1:50-200

### Storage

#### Storage\*

-15°C to -25°C/1 year (Do not lower than -25°C)

#### Formulation

Liquid in PBS containing 50% glycerol, 0.5% BSA and 0.02% sodium azide.

### Basic Information

#### Clonality

Polyclonal

### Immunogen Information

#### Immunogen

The antiserum was produced against synthesized peptide derived from human IL-3R beta. AA range: 559-608

#### Specificity

IL-3R $\beta$  Polyclonal Antibody detects endogenous levels of IL-3R $\beta$  protein.

### Target Information

Gene name CSF2RB IL3RB IL5RB

Protein Name Cytokine receptor common subunit beta

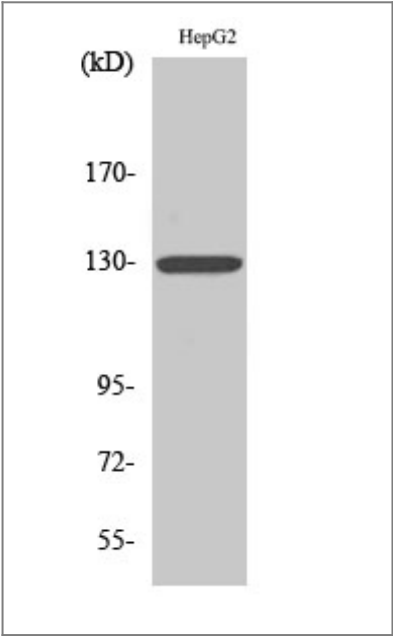
Organism	Gene ID	UniProt ID
Human	<a href="#">1439;</a>	<a href="#">P32927;</a>
Mouse	<a href="#">12983;</a>	<a href="#">P26955;</a>

Cellular Localization Membrane; Single-pass type I membrane protein.

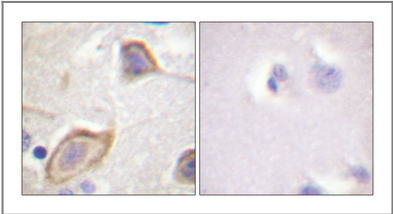
Tissue specificity Placenta,

Function Disease:Defects in CSF2RB are a cause of congenital pulmonary alveolar proteinosis (PAP) [MIM:265120]. PAP is an autosomal recessive fatal respiratory disease.,Domain:The box 1 motif is required for JAK interaction and/or activation.,Domain:The WSXWS motif appears to be necessary for proper protein folding and thereby efficient intracellular transport and cell-surface receptor binding.,Function:High affinity receptor for interleukin-3, interleukin-5 and granulocyte-macrophage colony-stimulating factor.,similarity:Belongs to the type I cytokine receptor family. Type 4 subfamily.,similarity:Contains 2 fibronectin type-III domains.,subunit:Heterodimer of an alpha and a beta subunit. The beta subunit is common to the IL3, IL5 and GM-CSF receptors.,

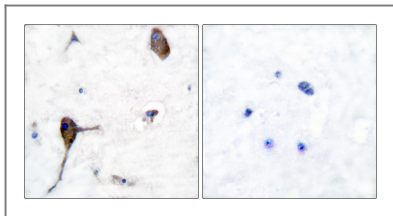
## Validation Data



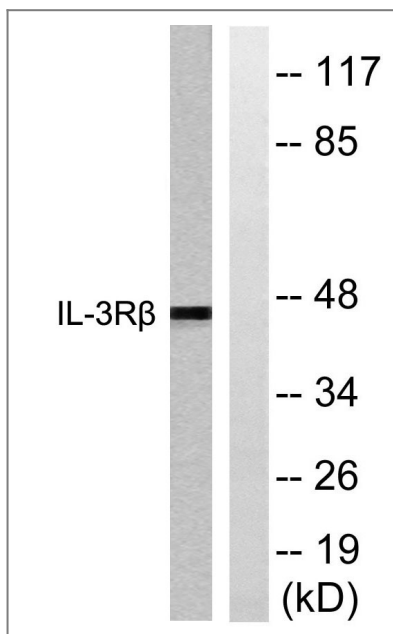
Western Blot analysis of various cells using IL-3Rβ Polyclonal Antibody



Immunohistochemical analysis of paraffin-embedded Human brain. Antibody was diluted at 1:100(4° overnight). High-pressure and temperature Tris-EDTA,pH8.0 was used for antigen retrieval. Negative ctrl (right) obtained from antibody was pre-absorbed by immunogen peptide.



Immunohistochemistry analysis of paraffin-embedded human brain tissue, using IL-3R beta Antibody. The picture on the right is blocked with the synthesized peptide.



Western blot analysis of lysates from Raw264.7 cells, treated with G-CSF 25ng/ml 15', using IL-3R beta Antibody. The lane on the right is blocked with the synthesized peptide.

## Contact information

Orders: [order@immunoway.com](mailto:order@immunoway.com)  
 Support: [tech@immunoway.com](mailto:tech@immunoway.com)  
 Telephone: 877-594-3616 (Toll Free), 408-747-0185  
 Website: <http://www.immunoway.com>  
 Address: 2200 Ringwood Ave San Jose, CA 95131 USA



Please scan the QR code to access additional product information:

**IL-3R $\beta$  Rabbit pAb**

For Research Use Only. Not for Use in Diagnostic Procedures.

[Antibody](#) | [ELISA Kits](#) | [Protein](#) | [Reagents](#)