

IL-11R α Rabbit pAb

CatalogNo: YT2310

Key Features

Host Species

- Rabbit

Reactivity

- Human

Applications

- WB, ELISA

MW

- 45kD (Observed)

Isotype

- IgG

Recommended Dilution Ratios

WB 1:500-1:2000

ELISA 1:20000

Not yet tested in other applications.

Storage

Storage*

-15°C to -25°C/1 year (Do not lower than -25°C)

Formulation

Liquid in PBS containing 50% glycerol, 0.5% BSA and 0.02% sodium azide.

Basic Information

Clonality

Polyclonal

Immunogen Information

Immunogen

Synthesized peptide derived from IL-11R α . at AA range: 300-380

Specificity

IL-11R α Polyclonal Antibody detects endogenous levels of IL-11R α protein.

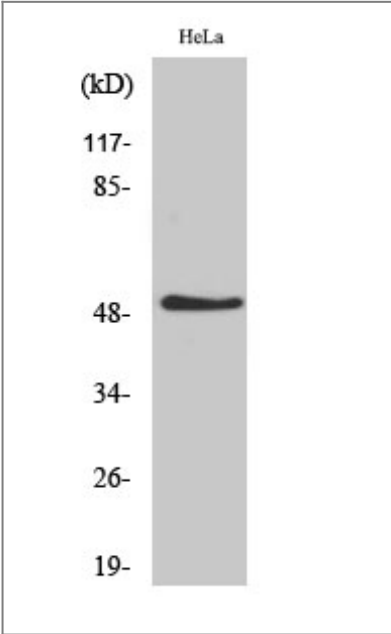
Target Information

Gene name

IL11RA

Protein Name	Interleukin-11 receptor subunit alpha		
	Organism	Gene ID	UniProt ID
	Human	3590 ;	Q14626 ;
	Mouse		Q64385 ;
Cellular Localization	[Interleukin-11 receptor subunit alpha]: Membrane ; Single-pass type I membrane protein . ; [Soluble interleukin-11 receptor subunit alpha]: Secreted . ; [Isoform HCR2]: Secreted .		
Tissue specificity	Expressed in a number of cell lines, including the myelogenous leukemia cell line K-562, the megakaryocytic leukemia cell line M-07e, the erythroleukemia cell line TF-1, and the osteosarcoma cell lines, MG-63 and SaOS-2 (PubMed:7670098). Also expressed in normal and malignant prostate epithelial cell lines. Expression levels are increased in prostate carcinoma.		
Function	Disease:Increased levels of IL11R are found in prostate carcinoma.,Function:Receptor for interleukin-11. The receptor systems for IL6, LIF, OSM, CNTF, IL11 and CT1 can utilize IL6ST for initiating signal transmission. The IL11/IL11RA/IL6ST complex may be involved in the control of proliferation and/or differentiation of skeletogenic progenitor or other mesenchymal cells.,similarity:Belongs to the type I cytokine receptor family. Type 3 subfamily.,similarity:Contains 1 Ig-like C2-type (immunoglobulin-like) domain.,similarity:Contains 2 fibronectin type-III domains.,subunit:On ligand binding, forms a multimer complex with IL6ST/gp130.,tissue specificity:Expressed in a number of cell lines, including the myelogenous leukemia cell line K562, the megakaryocytic leukemia cell line Mo7E, the erythroleukemia cell line TF1, and the osteosarcoma cell lines, MG-63 and Saos-2. Also expressed in normal and malignant prostate epithelial cell lines.,		

Validation Data



Western Blot analysis of various cells using IL-11Rα Polyclonal Antibody

| Contact information

Orders: order@immunoway.com
Support: tech@immunoway.com
Telephone: 877-594-3616 (Toll Free), 408-747-0185
Website: <http://www.immunoway.com>
Address: 2200 Ringwood Ave San Jose, CA 95131 USA



Please scan the QR code
to access additional
product information:

IL-11R α Rabbit pAb

For Research Use Only. Not for Use in Diagnostic Procedures.

[Antibody](#) | [ELISA Kits](#) | [Protein](#) | [Reagents](#)