

IL-10R α Rabbit pAb

CatalogNo: YT2308

Orthogonal Validated 

Key Features

Host Species

- Rabbit

Reactivity

- Human, Mouse

Applications

- WB, IF, ELISA

MW

- 63kD (Observed)

Isotype

- IgG

Recommended Dilution Ratios

WB 1:500-1:2000**IF 1:200-1:1000****ELISA 1:10000****Not yet tested in other applications.**

Storage

Storage*

-15°C to -25°C/1 year (Do not lower than -25°C)

Formulation

Liquid in PBS containing 50% glycerol, 0.5% BSA and 0.02% sodium azide.

Basic Information

Clonality

Polyclonal

Immunogen Information

Immunogen

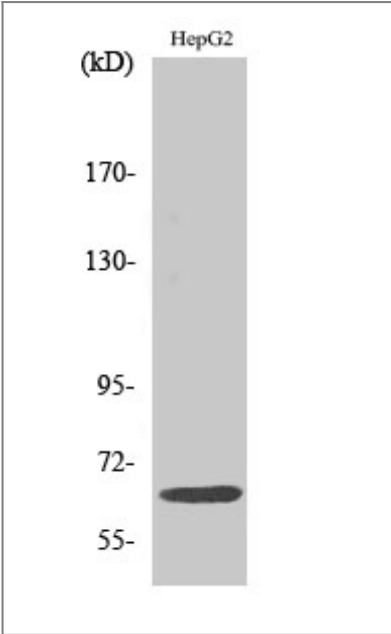
The antiserum was produced against synthesized peptide derived from human IL-10R alpha. AA range: 462-511

SpecificityIL-10R α Polyclonal Antibody detects endogenous levels of IL-10R α protein.

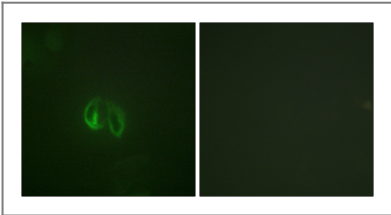
Target Information

Gene name	IL10RA		
Protein Name	Interleukin-10 receptor subunit alpha		
	Organism	Gene ID	UniProt ID
	Human	3587 ;	Q13651 ;
	Mouse		Q61727 ;
Cellular Localization	Cell membrane ; Single-pass type I membrane protein. Cytoplasm .		
Tissue specificity	Primarily expressed in hematopoietic cells including B-cells, T-cells, NK cells, monocytes and macrophages. Not expressed in non-hematopoietic cells such as fibroblasts or endothelial cells.		
Function	Function:Receptor for IL10; binds IL10 with a high affinity.,similarity:Belongs to the type II cytokine receptor family.,tissue specificity:Spleen, thymus, and PBMC. Weak expression in pancreas, skeletal muscle, brain, heart, and kidney. Placenta, lung, and liver showed intermediate levels. Monocytes, B-cells, large granular lymphocytes, and T-cells express high levels.,		

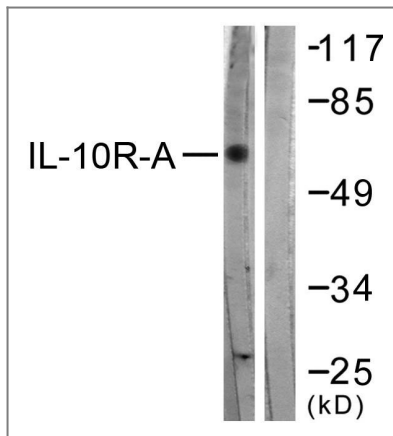
| Validation Data



Western Blot analysis of various cells using IL-10Rα Polyclonal Antibody



Immunofluorescence analysis of HepG2 cells, using IL-10R alpha Antibody. The picture on the right is blocked with the synthesized peptide.



Western blot analysis of lysates from HepG2 cells, treated with Na₂VO₃ 0.3nM 40', using IL-10R alpha Antibody. The lane on the right is blocked with the synthesized peptide.

Contact information

Orders: order@immunoway.com
 Support: tech@immunoway.com
 Telephone: 877-594-3616 (Toll Free), 408-747-0185
 Website: <http://www.immunoway.com>
 Address: 2200 Ringwood Ave San Jose, CA 95131 USA



Please scan the QR code to access additional product information:
IL-10Rα Rabbit pAb

For Research Use Only. Not for Use in Diagnostic Procedures.

[Antibody](#) | [ELISA Kits](#) | [Protein](#) | [Reagents](#)