

## IFN- $\gamma$ Rabbit pAb

CatalogNo: YT2279

Orthogonal Validated 

### Key Features

#### Host Species

- Rabbit

#### Reactivity

- Human,Rat,Mouse,

#### Applications

- WB,IHC,IF,ELISA

#### MW

- 17kD (Observed)

#### Isotype

- IgG

### Recommended Dilution Ratios

**WB 1:500-1:2000****IHC 1:100-1:300****ELISA 1:40000****IF 1:50-200**

### Storage

**Storage\*** -15°C to -25°C/1 year(Do not lower than -25°C)**Formulation** Liquid in PBS containing 50% glycerol, 0.5% BSA and 0.02% sodium azide.

### Basic Information

**Clonality** Polyclonal

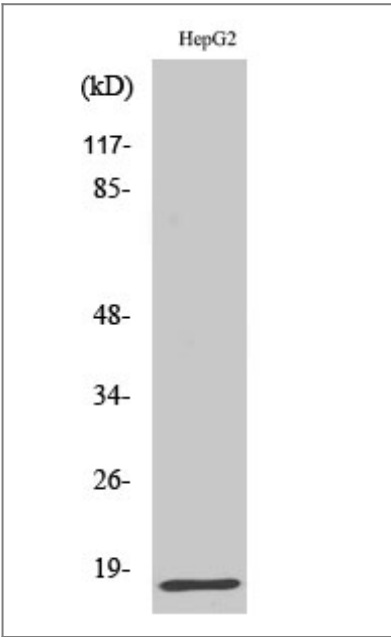
### Immunogen Information

**Immunogen** The antiserum was produced against synthesized peptide derived from human IFN-gamma. AA range:20-69**Specificity** IFN- $\gamma$  Polyclonal Antibody detects endogenous levels of IFN- $\gamma$  protein.

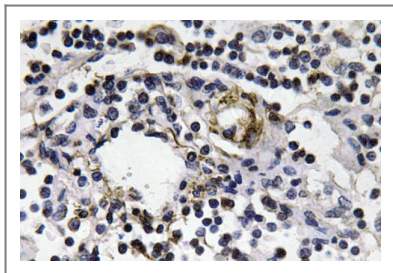
### Target Information

Gene name	IFNG		
Protein Name	Interferon gamma		
	Organism	Gene ID	UniProt ID
	Human	<a href="#">3458;</a>	<a href="#">P01579;</a>
	Mouse		<a href="#">P01580;</a>
Cellular Localization	Secreted.		
Tissue specificity	Released primarily from activated T lymphocytes.		
Function	<p>Disease:In Caucasians, genetic variation in IFNG is associated with the risk of aplastic anemia (AA) [MIM:609135]. AA is a rare disease in which the reduction of the circulating blood cells results from damage to the stem cell pool in bone marrow. In most patients, the stem cell lesion is caused by an autoimmune attack. T-lymphocytes, activated by an endogenous or exogenous, and most often unknown antigenic stimulus, secrete cytokines, including IFN-gamma, which would in turn be able to suppress hematopoiesis.,Function:Produced by lymphocytes activated by specific antigens or mitogens. IFN-gamma, in addition to having antiviral activity, has important immunoregulatory functions. It is a potent activator of macrophages, it has antiproliferative effects on transformed cells and it can potentiate the antiviral and antitumor effects of the type I interferons.,online information:Interferon gamma entry,pharmaceutical:Available under the name Actimmune (Genentech). Used for reducing the frequency and severity of serious infections associated with chronic granulomatous disease (CGD).,PTM:Proteolytic processing produces C-terminal heterogeneity, with proteins ending alternatively at Gly-150, Met-157 or Gly-161.,similarity:Belongs to the type II (or gamma) interferon family.,subunit:Homodimer.,tissue specificity:Released primarily from activated T lymphocytes.,</p>		

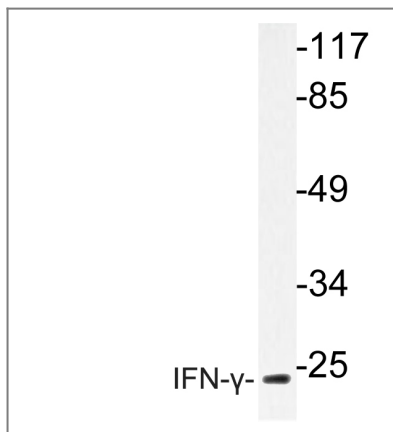
| Validation Data



Western Blot analysis of various cells using IFN-γ Polyclonal Antibody diluted at 1:1000



Immunohistochemistry analysis of IFN-γ antibody in paraffin-embedded human lymph node tissue.



Western blot analysis of lysate from HepG2 cells, using IFN-γ antibody.

## Contact information

Orders: [order@immunoway.com](mailto:order@immunoway.com)  
 Support: [tech@immunoway.com](mailto:tech@immunoway.com)  
 Telephone: 877-594-3616 (Toll Free), 408-747-0185  
 Website: <http://www.immunoway.com>  
 Address: 2200 Ringwood Ave San Jose, CA 95131 USA



Please scan the QR code  
 to access additional  
 product information:  
**IFN-γ Rabbit pAb**

For Research Use Only. Not for Use in Diagnostic Procedures.

[Antibody](#) | [ELISA Kits](#) | [Protein](#) | [Reagents](#)