

IFN- α / β R α Rabbit pAb

CatalogNo: YT2278

Key Features

Host Species

- Rabbit

Reactivity

- Human, Mouse

Applications

- IHC, IF, ELISA

MW

- 64kD (Calculated)

Isotype

- IgG

Storage

Storage* -15°C to -25°C/1 year (Do not lower than -25°C)

Formulation Liquid in PBS containing 50% glycerol, 0.5% BSA and 0.02% sodium azide.

Recommended Dilution Ratios

IHC 1:100-1:300

IF 1:200-1:1000

ELISA 1:20000

Not yet tested in other applications.

Basic Information

Clonality Polyclonal

Immunogen Information

Immunogen The antiserum was produced against synthesized peptide derived from human Interferon-alpha/beta Receptor alpha chain. AA range:436-485

Specificity IFN- α / β R α Polyclonal Antibody detects endogenous levels of IFN- α / β R α protein.

Target Information

Gene name IFNAR1

Protein Name Interferon alpha/beta receptor 1

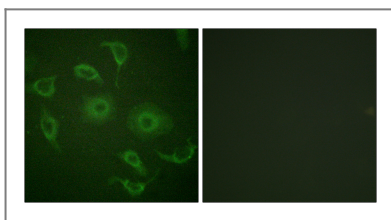
Organism	Gene ID	UniProt ID
Human	3454;	P17181;
Mouse		P33896;

Cellular Localization [Isoform 1]: Cell membrane ; Single-pass type I membrane protein . Late endosome . Lysosome . Interferon binding triggers internalization of the receptor from the cell membrane into endosomes and then into lysosomes. .

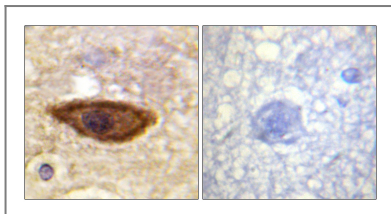
Tissue specificity IFN receptors are present in all tissues and even on the surface of most IFN-resistant cells. Isoform 1, isoform 2 and isoform 3 are expressed in the IFN-alpha sensitive myeloma cell line U266B1. Isoform 2 and isoform 3 are expressed in the IFN-alpha resistant myeloma cell line U266R. Isoform 1 is not expressed in IFN-alpha resistant myeloma cell line U266R.

Function Function:Receptor for interferons alpha and beta. Binding to type I IFNs triggers tyrosine phosphorylation of a number of proteins including JAKs, TYK2, STAT proteins and IFNR alpha- and beta-subunits themselves.,PTM:Phosphorylated on tyrosine residues by TYK2 tyrosine kinase.,sequence Caution:Contaminating sequence. Potential poly-A sequence.,similarity:Belongs to the type II cytokine receptor family.,similarity:Contains 3 fibronectin type-III domains.,tissue specificity:IFN receptors are present in all tissues and even on the surface of most IFN-resistant cells. Isoform 1, isoform 2 and isoform 3 are expressed in the IFN-alpha sensitive myeloma cell line U266S. Isoform 2 and isoform 3 are expressed in the IFN-alpha resistant myeloma cell line U266R, isoform 1 is not expressed in U266R.,

Validation Data



Immunofluorescence analysis of HepG2 cells, using Interferon-alpha/beta Receptor alpha chain Antibody. The picture on the right is blocked with the synthesized peptide.



Immunohistochemistry analysis of paraffin-embedded human brain tissue, using Interferon-alpha/beta Receptor alpha chain Antibody. The picture on the right is blocked with the synthesized peptide.

Contact information

Orders: order@immunoway.com
Support: tech@immunoway.com
Telephone: 877-594-3616 (Toll Free), 408-747-0185
Website: http://www.immunoway.com
Address: 2200 Ringwood Ave San Jose, CA 95131 USA



Please scan the QR code
to access additional
product information:
**IFN- α / β R α Rabbit
pAb**

For Research Use Only. Not for Use in Diagnostic Procedures.

[Antibody](#) | [ELISA Kits](#) | [Protein](#) | [Reagents](#)